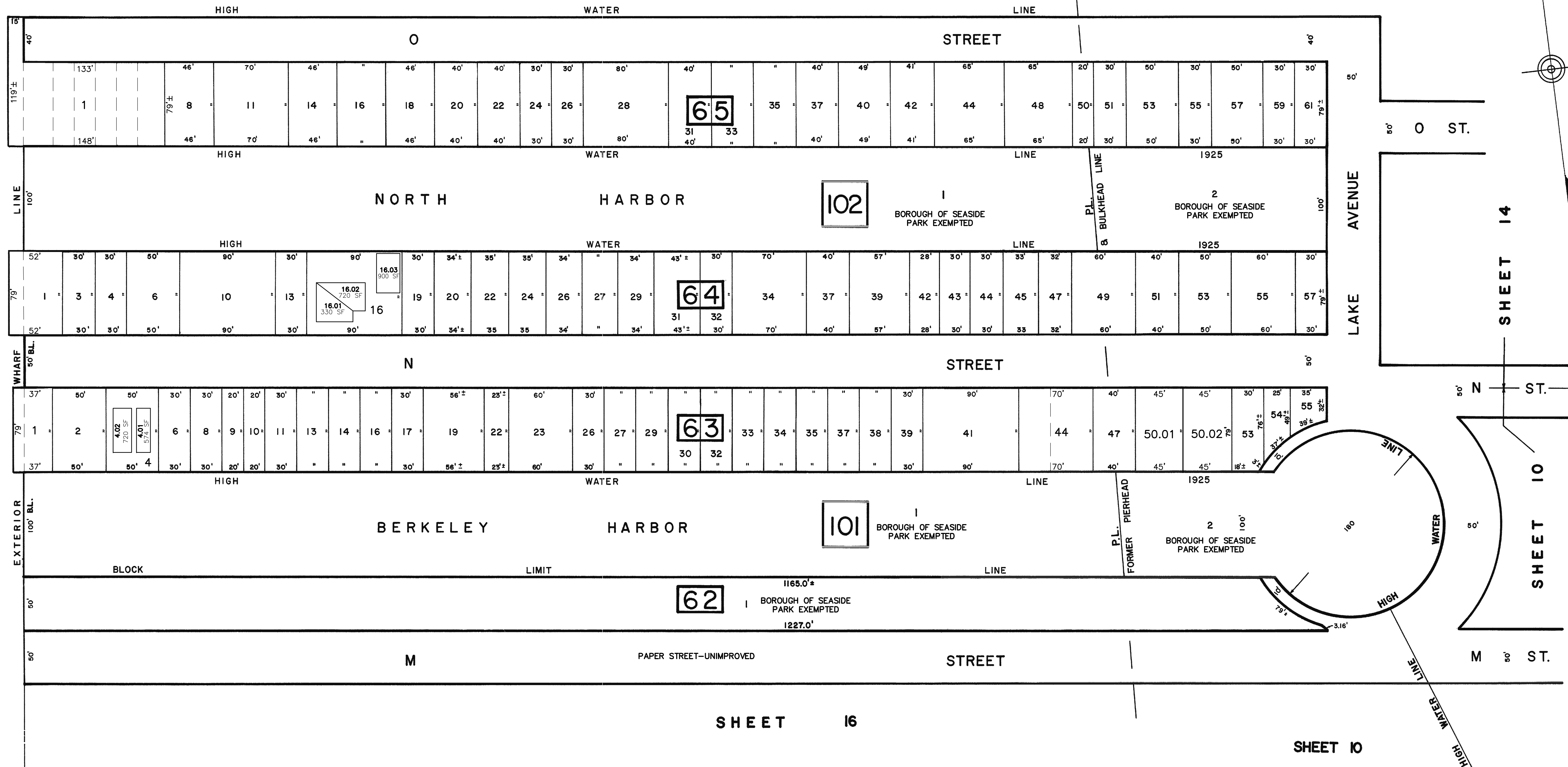


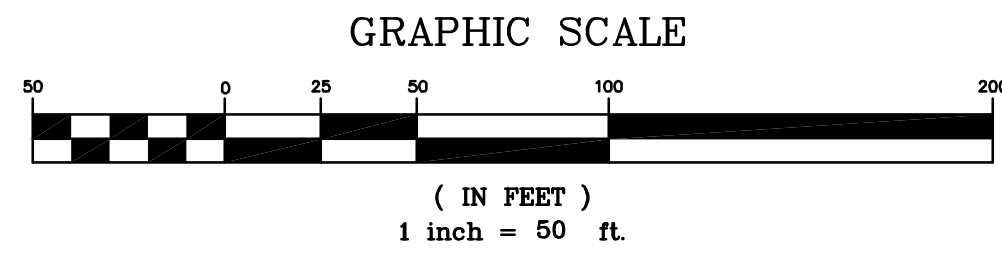
REVISION		
DATE	L.S. NAME	LIC. #
JAN. 1993	THOMAS CRADER	21782
JULY 2009	MICHAEL MCGURL	38338

BARNEGAT BAY



THIS SHEET HAS BEEN REVISED USING COMPUTER AIDED DRAFTING/DESIGN. (CADD)

THIS SHEET IS A SCANNED COPY OF THE TAX MAP PREPARED BY REMINGTON & VERNICK ENGINEERS DATED DECEMBER 1986. THE ORIGINAL APPROVED MAP IS ON FILE AT CME ASSOCIATES, HOWELL, NEW JERSEY.



NEW JERSEY DEPARTMENT OF THE TREASURY
OFFICE OF TAXATION
LOCAL PROPERTY TAXES
APPROVED AS A TAX MAP PURSUANT TO THE
PROVISIONS OF CHAPTER 175, LAWS OF 1916, ETC.
FOR THE CHIEF, DIVISION OF TAXATION

John J. ...

BY: _____ P.E. & L.S.
DATE: _____

TAX MAP
BOROUGH OF SEASIDE PARK
OCEAN COUNTY NEW JERSEY
SCALE 1" = 50' DECEMBER 1986
CRAIG F. REMINGTON, L.S.
REMINGTON & VERNICK ENGINEERS
9 ALLEN STREET, TOMS RIVER, NEW JERSEY
TO SHOW CONDITIONS AS OF JULY 2009.