



Hiering, Dupignac,
Stanzione & Dunn, P.C.
ATTORNEYS AT LAW

William T. Hiering
(1946-2005)
Frank J. Dupignac, Jr.
Richard D. Stanzione
Lynne A. Dunn
Also Admitted in FL & PA
Rule 1:40 Qualified Mediator
Paige E. Baran
Also Admitted in NY
Michael R. Stanzione
Also Admitted in PA
Yuliya V. Tedeschi
Also Admitted in PA

February 11, 2021

VIA EMAIL AND HAND DELIVERY

Seaside Park Planning Board
1701 North Ocean Avenue
PO Box B
Seaside Park, NJ 08752
Attention: Sandra Martin, Board Secretary

**Re: Berner Residential Variance Application
18 G Street, Seaside Park, NJ, Block 49, Lot 13**

Dear Ms. Martin:

Enclosed please find fifteen (15) updated signed and sealed Plot Plans of Jason M. Marciano, P.E., P.P. of East Coast Engineering, Inc. dated February 11, 2021 which address the coverage issues raised by Mr. Rohmeyer in his recent report.

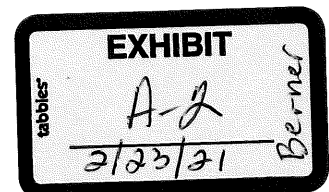
Please do not hesitate to contact me should you have any questions or require any additional information. I thank you and the rest of the Board's professional staff for your consideration of this application.

Very truly yours,
**HIERING, DUPIGNAC,
STANZIONE & DUNN, P.C.**


LYNNE A. DUNN

LAD/ssf
Enclosures

cc: Blase and Kent Berner (via email w/enclosures)
Mr. Robert Martin, Dolphin Homes (via email w/ enclosures)
Dario Pasquariello, R.A. A.I.A. (via email w/enclosures)



Sandra Martin, Planning Board Secretary
Borough of Seaside Park
February 2, 2021
Page 2

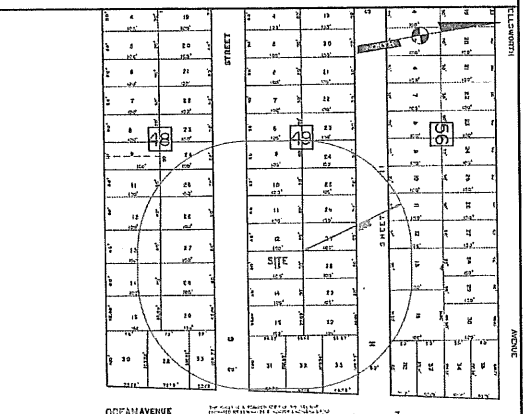
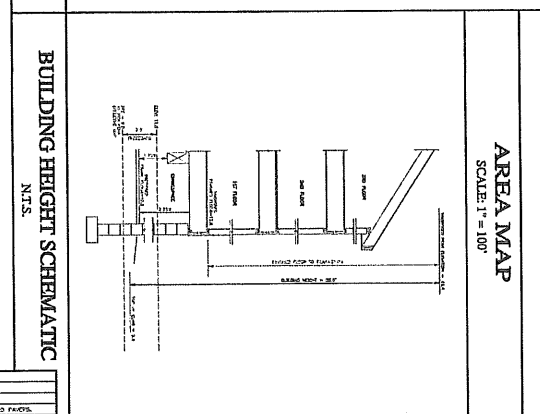
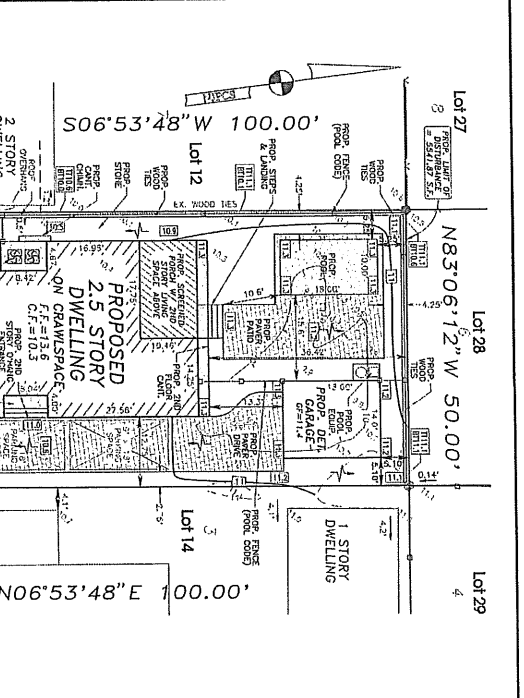
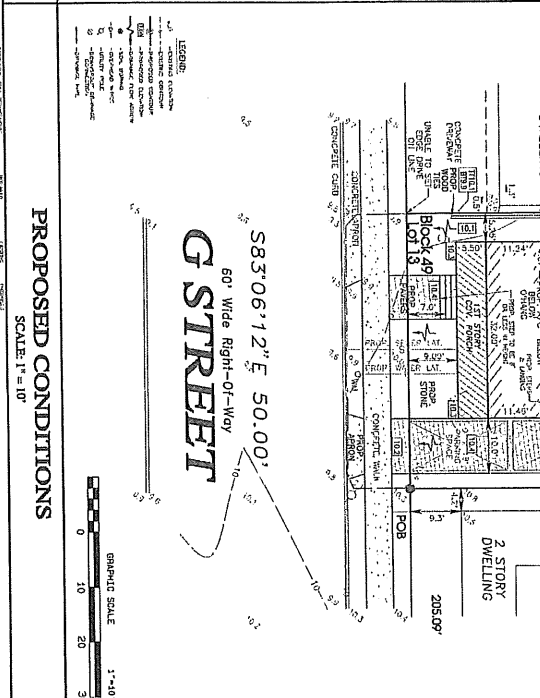
Jason M. Marciano, P.E., P.P. (via email w/ enclosures)
Allison Coffin, P.P. (via email w/ enclosures)
Douglas Rohmeyer, P.E., C.M.E. (via email w/ enclosures)
Gregory Hock, Esquire (via email w/ enclosures)

S:\WPDOCS\Zoning\Berner, Blase and Kent\ Correspondence\ filing application with Borough.docx

OWNER'S IN 200 FEET	ADDRESS	OWNER'S NAME	ADDRESS
1	101 N. 1ST ST.	THE BANK OF AMERICA	101 N. 1ST ST.
2	102 N. 1ST ST.	THE BANK OF AMERICA	102 N. 1ST ST.
3	103 N. 1ST ST.	THE BANK OF AMERICA	103 N. 1ST ST.
4	104 N. 1ST ST.	THE BANK OF AMERICA	104 N. 1ST ST.
5	105 N. 1ST ST.	THE BANK OF AMERICA	105 N. 1ST ST.
6	106 N. 1ST ST.	THE BANK OF AMERICA	106 N. 1ST ST.
7	107 N. 1ST ST.	THE BANK OF AMERICA	107 N. 1ST ST.
8	108 N. 1ST ST.	THE BANK OF AMERICA	108 N. 1ST ST.
9	109 N. 1ST ST.	THE BANK OF AMERICA	109 N. 1ST ST.
10	110 N. 1ST ST.	THE BANK OF AMERICA	110 N. 1ST ST.
11	111 N. 1ST ST.	THE BANK OF AMERICA	111 N. 1ST ST.
12	112 N. 1ST ST.	THE BANK OF AMERICA	112 N. 1ST ST.
13	113 N. 1ST ST.	THE BANK OF AMERICA	113 N. 1ST ST.
14	114 N. 1ST ST.	THE BANK OF AMERICA	114 N. 1ST ST.
15	115 N. 1ST ST.	THE BANK OF AMERICA	115 N. 1ST ST.
16	116 N. 1ST ST.	THE BANK OF AMERICA	116 N. 1ST ST.
17	117 N. 1ST ST.	THE BANK OF AMERICA	117 N. 1ST ST.
18	118 N. 1ST ST.	THE BANK OF AMERICA	118 N. 1ST ST.
19	119 N. 1ST ST.	THE BANK OF AMERICA	119 N. 1ST ST.
20	120 N. 1ST ST.	THE BANK OF AMERICA	120 N. 1ST ST.
21	121 N. 1ST ST.	THE BANK OF AMERICA	121 N. 1ST ST.
22	122 N. 1ST ST.	THE BANK OF AMERICA	122 N. 1ST ST.
23	123 N. 1ST ST.	THE BANK OF AMERICA	123 N. 1ST ST.
24	124 N. 1ST ST.	THE BANK OF AMERICA	124 N. 1ST ST.
25	125 N. 1ST ST.	THE BANK OF AMERICA	125 N. 1ST ST.
26	126 N. 1ST ST.	THE BANK OF AMERICA	126 N. 1ST ST.
27	127 N. 1ST ST.	THE BANK OF AMERICA	127 N. 1ST ST.
28	128 N. 1ST ST.	THE BANK OF AMERICA	128 N. 1ST ST.
29	129 N. 1ST ST.	THE BANK OF AMERICA	129 N. 1ST ST.
30	130 N. 1ST ST.	THE BANK OF AMERICA	130 N. 1ST ST.

OWNER'S IN 200 FEET	ADDRESS	OWNER'S NAME	ADDRESS
31	131 N. 1ST ST.	THE BANK OF AMERICA	131 N. 1ST ST.
32	132 N. 1ST ST.	THE BANK OF AMERICA	132 N. 1ST ST.
33	133 N. 1ST ST.	THE BANK OF AMERICA	133 N. 1ST ST.
34	134 N. 1ST ST.	THE BANK OF AMERICA	134 N. 1ST ST.
35	135 N. 1ST ST.	THE BANK OF AMERICA	135 N. 1ST ST.
36	136 N. 1ST ST.	THE BANK OF AMERICA	136 N. 1ST ST.
37	137 N. 1ST ST.	THE BANK OF AMERICA	137 N. 1ST ST.
38	138 N. 1ST ST.	THE BANK OF AMERICA	138 N. 1ST ST.
39	139 N. 1ST ST.	THE BANK OF AMERICA	139 N. 1ST ST.
40	140 N. 1ST ST.	THE BANK OF AMERICA	140 N. 1ST ST.
41	141 N. 1ST ST.	THE BANK OF AMERICA	141 N. 1ST ST.
42	142 N. 1ST ST.	THE BANK OF AMERICA	142 N. 1ST ST.
43	143 N. 1ST ST.	THE BANK OF AMERICA	143 N. 1ST ST.
44	144 N. 1ST ST.	THE BANK OF AMERICA	144 N. 1ST ST.
45	145 N. 1ST ST.	THE BANK OF AMERICA	145 N. 1ST ST.
46	146 N. 1ST ST.	THE BANK OF AMERICA	146 N. 1ST ST.
47	147 N. 1ST ST.	THE BANK OF AMERICA	147 N. 1ST ST.
48	148 N. 1ST ST.	THE BANK OF AMERICA	148 N. 1ST ST.
49	149 N. 1ST ST.	THE BANK OF AMERICA	149 N. 1ST ST.
50	150 N. 1ST ST.	THE BANK OF AMERICA	150 N. 1ST ST.

OWNER'S IN 200 FEET	ADDRESS	OWNER'S NAME	ADDRESS
51	151 N. 1ST ST.	THE BANK OF AMERICA	151 N. 1ST ST.
52	152 N. 1ST ST.	THE BANK OF AMERICA	152 N. 1ST ST.
53	153 N. 1ST ST.	THE BANK OF AMERICA	153 N. 1ST ST.
54	154 N. 1ST ST.	THE BANK OF AMERICA	154 N. 1ST ST.
55	155 N. 1ST ST.	THE BANK OF AMERICA	155 N. 1ST ST.
56	156 N. 1ST ST.	THE BANK OF AMERICA	156 N. 1ST ST.
57	157 N. 1ST ST.	THE BANK OF AMERICA	157 N. 1ST ST.
58	158 N. 1ST ST.	THE BANK OF AMERICA	158 N. 1ST ST.
59	159 N. 1ST ST.	THE BANK OF AMERICA	159 N. 1ST ST.
60	160 N. 1ST ST.	THE BANK OF AMERICA	160 N. 1ST ST.
61	161 N. 1ST ST.	THE BANK OF AMERICA	161 N. 1ST ST.
62	162 N. 1ST ST.	THE BANK OF AMERICA	162 N. 1ST ST.
63	163 N. 1ST ST.	THE BANK OF AMERICA	163 N. 1ST ST.
64	164 N. 1ST ST.	THE BANK OF AMERICA	164 N. 1ST ST.
65	165 N. 1ST ST.	THE BANK OF AMERICA	165 N. 1ST ST.
66	166 N. 1ST ST.	THE BANK OF AMERICA	166 N. 1ST ST.
67	167 N. 1ST ST.	THE BANK OF AMERICA	167 N. 1ST ST.
68	168 N. 1ST ST.	THE BANK OF AMERICA	168 N. 1ST ST.
69	169 N. 1ST ST.	THE BANK OF AMERICA	169 N. 1ST ST.
70	170 N. 1ST ST.	THE BANK OF AMERICA	170 N. 1ST ST.



VARIANCE PLAN
 PREPARED FOR
BLAISE BERNER
 BLOCK 49 LOT 13
 BOROUGH OF SEASIDE PARK
 OCEAN COUNTY, NEW JERSEY

JAYE PIERSON P.L.S. P.P. **JASON M. MARICANO P.E. P.P.**

Coast Engineering, Inc.
 ENGINEERING CONSULTANTS AND ARCHITECTS
 1000 ROUTE 138
 SEASIDE PARK, NJ 08078

META DATA
 DATE: 08/15/2011
 TIME: 10:00 AM
 USER: JAYE PIERSON
 PROJECT: SEASIDE PARK BOROUGH LOT 13

EXISTING CONDITIONS
 SCALE: 1" = 20'

PROPOSED CONDITIONS
 SCALE: 1" = 10'

BUILDING HEIGHT SCHEMATIC
 N.T.S.

OWNERS IN 200 FEET
 SCALE: 1" = 10'