



SITE NAME:
JS SEASIDE PARK 12 SC

SITE LOCATION:
[NEAREST TO] 144 K ST
SEASIDE PARK, NJ
OCEAN COUNTY



Shelbourne at Hunterdon
53 Frontage Road, Suite 260
Hampton, NJ 08827
Ph 908.323.2513 Fax 908.323.2525



NJ PROFESSIONAL ENGINEER # 24GE01133700
IT IS A VIOLATION OF THE LAW FOR ANY PERSON, UNLESS ACTING UNDER THE DIRECTION OF A LICENSED ENGINEER, TO ALTER THIS DOCUMENT IN ANY WAY. SIGNATURE AND SEAL NOT VALID UNLESS ORIGINAL.

APPLICANT:



CONTRACTOR SHALL CONTACT SDG PRIOR TO ORDERING MATERIALS OR BEGINNING CONSTRUCTION TO ENSURE THAT THEY HAVE THE LATEST REVISION OF THE CONSTRUCTION DOCUMENTS.

0	ISSUED FOR CONSTRUCTION	03/23/21	RR
NO.	ISSUE OR REVISION	DATE	BY

PROJECT TITLE:

CONSTRUCTION DOCUMENT

SITE NAME:
JS SEASIDE PARK 12 SC

[NEAREST TO]
144 K ST
SEASIDE PARK, NJ
OCEAN COUNTY

SDG PROJECT #: 20TIL031

SCALE: AS NOTED DATE: 11/05/20

DRAWING TITLE:

COVER PAGE

DRAWING NO.: PAGE NO.:

C1 1 of 7

APPLICABLE BUILDING CODES AND STANDARDS

SUBCONTRACTOR'S WORK SHALL COMPLY WITH ALL APPLICABLE NATIONAL, STATE, AND LOCAL CODES AS ADOPTED BY THE LOCAL AUTHORITY HAVING JURISDICTION (AHJ) FOR THE LOCATION. THE EDITION OF THE AHJ ADOPTED CODES AND STANDARDS IN EFFECT ON THE DATE OF CONTRACT AWARD SHALL GOVERN THE DESIGN.

BUILDING CODE:
[INTERNATIONAL BUILDING CODE (IBC), 2018 AS ADOPTED BY NEW JERSEY]

ELECTRICAL CODE:
[NATIONAL FIRE PROTECTION ASSOCIATION (NFPA) 70 - 2017, NATIONAL ELECTRICAL CODE, AS ADOPTED BY NEW JERSEY]

LIGHTNING PROTECTION CODE:
[NFPA 780 - 2006, LIGHTNING PROTECTION CODE]

SUBCONTRACTOR'S WORK SHALL COMPLY WITH THE LATEST APPROVED OF THE FOLLOWING STANDARDS:

AMERICAN CONCRETE INSTITUTE (ACI) 318, BUILDING CODE REQUIREMENTS FOR STRUCTURAL CONCRETE

AMERICAN INSTITUTE OF STEEL CONSTRUCTION (AISC), MANUAL OF STEEL CONSTRUCTION, ASD, FIFTEENTH EDITION, AISC 360, SPECIFICATION FOR STRUCTURAL STEEL BUILDINGS

TIA-222-H, STRUCTURAL STANDARDS FOR STEEL ANTENNA TOWER AND ANTENNA SUPPORTING STRUCTURES, TIA 607 COMMERCIAL BUILDING GROUNDING AND BONDING REQUIREMENTS FOR TELECOMMUNICATIONS

AMERICAN WELDING SOCIETY (AWS) D1.1 (2004), STRUCTURAL WELDING CODE - STEEL

INSTITUTE OF ELECTRICAL AND ELECTRONICS ENGINEERS (IEEE) 81, GUIDE FOR MEASURING EARTH RESISTIVITY, GROUND IMPEDANCE, AND EARTH SURFACE POTENTIALS OF A GROUND SYSTEM IEEE 1100 (1999) RECOMMENDED PRACTICE FOR POWERING AND GROUNDING OF ELECTRONIC EQUIPMENT

IEEE C2 NATIONAL ELECTRIC SAFETY CODE (NEC) 2012

TELCORDIA GR-1275 GENERAL INSTALLATION REQUIREMENTS

AMERICAN ASSOCIATION OF STATE AND HIGHWAY TRANSPORTATION OFFICIAL (AASHTO) ROADSIDE DESIGN GUIDE, 4TH EDITION AND ROADWAY LIGHTING DESIGN GUIDE.

THE STATE OF NEW JERSEY, DEPARTMENT OF TRANSPORTATION (DOT) DESIGN MANUAL 2015

FOR ANY CONFLICTS BETWEEN SECTIONS OF LISTED CODES AND STANDARDS REGARDING MATERIAL, METHODS OF CONSTRUCTION OR OTHER REQUIREMENTS, THE MOST RESTRICTIVE REQUIREMENT SHALL GOVERN. WHERE THERE IS CONFLICT BETWEEN A GENERAL REQUIREMENT AND A SPECIFIC REQUIREMENT, THE SPECIFIC REQUIREMENT SHALL GOVERN.

PROJECT SUMMARY:

SITE NAME: JS SEASIDE PARK 12 SC
NEAREST TO: 144 K ST
SEASIDE PARK, NJ
OCEAN COUNTY

APPLICANT/OWNER: VERIZON NEW JERSEY, INC.
657 FLORIDA GROVE RD.
HOPE LAWN, NJ 08861

TELCO PROVIDER: VERIZON
ELECTRIC PROVIDER: JCP&L
APPLICANT: NEW YORK SMSA LP
D/B/A VERIZON WIRELESS
180 WASHINGTON VALLEY ROAD
BEDMINSTER, NJ 07921

LATITUDE: 39.931407N (NAD83)
LONGITUDE: 74.079618W (NAD83)
ELEVATION: 0' (NAVD 88)
POLE NUMBER: BT 139 SSP
ROW OWNER: MUNICIPAL
BLOCK AND LOT: N/A [IN R.O.W.] (NEAREST TO 53.01/2)
POLE TYPE: UTILITY

ENGINEER: COLLEEN CONNOLLY
SCHERER DESIGN GROUP, LLC
53 FRONTAGE ROAD, SUITE 260
HAMPTON, NJ 08827
(908) 323-2513

ENGINEERING CONTACT: ANTHONY REKOSIK
SCHERER DESIGN GROUP, LLC
53 FRONTAGE ROAD, SUITE 260
HAMPTON, NJ 08827
(908) 323-2513

APPROVALS

		APPROVED	APPROVED AS NOTED	DISAPPROVED/ REVISE
CONSTRUCTION MANAGER:	DATE	<input type="checkbox"/>	<input type="checkbox"/>	<input type="checkbox"/>
RF ENGINEER:	DATE	<input type="checkbox"/>	<input type="checkbox"/>	<input type="checkbox"/>
PROJECT MANAGER:	DATE	<input type="checkbox"/>	<input type="checkbox"/>	<input type="checkbox"/>
APPLICANT:	DATE	<input type="checkbox"/>	<input type="checkbox"/>	<input type="checkbox"/>
APPLICANT AGENT:	DATE	<input type="checkbox"/>	<input type="checkbox"/>	<input type="checkbox"/>
SITE OWNER/OWNER REP:	DATE	<input type="checkbox"/>	<input type="checkbox"/>	<input type="checkbox"/>

SCOPE OF WORK:

- INSTALLATION OF (4) PROPOSED ANTENNAS AND (4) RRH UNITS ON A REPLACEMENT UTILITY POLE.
- FACILITY IS UNMANNED AND NOT FOR HUMAN HABITATION
- FACILITY HAS NO PLUMBING OR REFRIGERANTS
- THIS FACILITY SHALL MEET OR EXCEED ALL FAA AND FCC REGULATORY REQUIREMENTS
- ALL NEW MATERIAL SHALL BE FURNISHED AND INSTALLED BY CONTRACTOR UNLESS NOTED OTHERWISE. CABINETS, ANTENNAS/RRU AND CABLES FURNISHED BY OWNER AND INSTALLED BY CONTRACTOR
- ASSOCIATED AC POWER TELECOMMUNICATION AND RF CABLING

FLOOD ZONE:

MAP NUMBER: 34029C0337F
FLOOD ZONE TYPE: EL
BASE FLOOD ELEVATION: 6'



LOCATION MAP
NOT TO SCALE

DWG.	DWG. TITLE
C1	COVER PAGE
S1	SITE PLAN AND GENERAL NOTES
S2	ELEVATIONS
S3	DETAILS
S4	DETAILS
S5	ONE LINE DIAGRAMS
G1	GROUNDING DETAILS

(TYPICAL DRAFTING STANDARDS FOR ALL SHEETS)

Existing	Light, Upper And Lower Case Lettering When Labeling Existing Features
PROPOSED	BOLD, UPPER CASE LETTERING WHEN LABELING PROPOSED FEATURES
---	Light Lines Represent Existing Features
---	DARK LINES REPRESENT PROPOSED FEATURES



GENERAL NOTES:

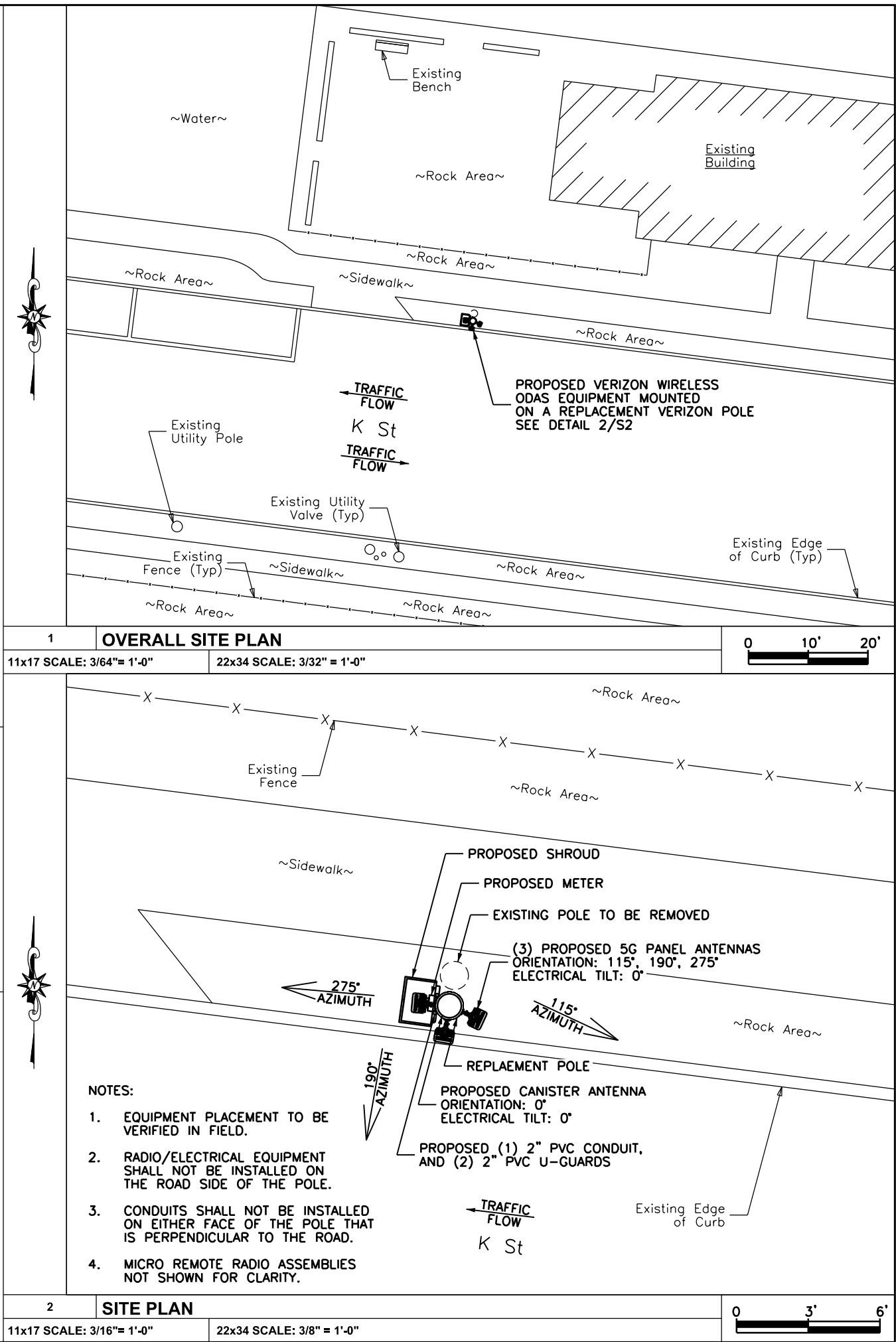
- THE NOTES CONTAINED HEREIN ARE NOT PROJECT SPECIFIC. THE CONTRACTOR SHALL UTILIZE ALL THE NOTES WHICH PERTAIN TO THE WORK DEPICTED IN THIS PLAN SET.
- THE CONTRACTORS SHALL CONTACT SDG TO VERIFY THAT THEY HAVE BEEN ISSUED THE LATEST REVISION OF THE CONSTRUCTION DOCUMENTS PRIOR TO THE START OF CONSTRUCTION.
- ALL DIMENSIONS AND INFORMATION SHOWN IN THE DRAWINGS ARE APPROXIMATE, DERIVED FROM LIMITED FIELD OBSERVATIONS, MADE FOR THIS PROJECT BY TILSON. DETAILED INFORMATION WAS COLLECTED FOR SPECIFIC WORK AREAS, WHERE NOTED. THIS INFORMATION IS TO BE USED FOR THE WORK SHOWN ON THESE PLANS ONLY.
- UNLESS SPECIFICALLY REQUESTED BY THE CLIENT OR REQUIRED TO PROCEED WITH THE CREATION OF THE CONSTRUCTION DOCUMENTS, STRUCTURAL PROBES HAVE NOT BEEN PERFORMED. UTILITY POLE AND ASSOCIATED HARDWARE CONFIGURATION AND CONDITION NOT OTHERWISE VISIBLE BENEATH SURFACE FINISHES, MAY VARY AND SHALL BE CONFIRMED BY THE CONTRACTOR PRIOR TO PROCEEDING WITH CONSTRUCTION. ANY DISCREPANCIES, WHETHER IN CONFIGURATION OR CONDITION SHALL BE BROUGHT TO THE IMMEDIATE ATTENTION OF THE ENGINEER.
- CONTRACTOR SHALL VERIFY ALL DIMENSIONS & FIELD CONDITIONS PRIOR TO THE START OF CONSTRUCTION. DISCREPANCIES SHALL BE BROUGHT TO THE IMMEDIATE ATTENTION OF THE ENGINEER. THE CONSEQUENCES OF PROCEEDING WITH CONSTRUCTION AFTER DISCOVERING A FIELD CONDITION DISCREPANCY AND WITHOUT THE APPROVAL OR RECOMMENDATIONS OF THE ENGINEER, SHALL BE THE SOLE RESPONSIBILITY OF THE CONTRACTOR.
- THE CONTRACTOR SHALL ADHERE TO ALL APPLICABLE LOCAL, STATE AND FEDERAL CODES.
- CONTRACTOR IS RESPONSIBLE FOR ALL NECESSARY PERMITS AND INSPECTIONS TO COMPLETE WORK. THE CONTRACTOR SHALL BE RESPONSIBLE FOR COORDINATING ALL INSPECTIONS REQUIRED BY THE AUTHORITY HAVING JURISDICTION, INCLUDING, BUT NOT LIMITED TO, ELECTRICAL, PLUMBING, FIRE PROTECTION AND STRUCTURAL.
- THE CONTRACTOR SHALL BE RESPONSIBLE TO NOTIFY THE ENGINEER OF CONSTRUCTION STAGES WHICH REQUIRE SPECIAL OR CONTROLLED INSPECTIONS WITH A MINIMUM OF 48 HOURS (BUSINESS DAYS) NOTICE. THESE INSPECTIONS INCLUDE, BUT ARE NOT LIMITED TO, CONCRETE REINFORCEMENT, CONCRETE POURING, STRUCTURAL STEEL ERECTION/BOLTING, WELDING AND THE INSTALLATION OF EPOXY ANCHORS. FAILURE TO COORDINATE THESE INSPECTIONS WITH THE ENGINEER MAY PROHIBIT SIGNOFF WITH THE AUTHORITY HAVING JURISDICTION.
- THE CONTRACTOR IS RESPONSIBLE FOR SITE SAFETY DURING CONSTRUCTION. THE ENGINEER HAS NO RESPONSIBILITY FOR OR CONTROL OVER SAFETY AT ANY TIME.
- THE ENGINEER HAS NOT PERFORMED AN INSPECTION FOR HAZARDOUS MATERIALS. THESE DRAWINGS ARE NOT MEANT TO DEPICT OR IMPLY THE PRESENCE OR ABSENCE OF SUCH MATERIALS WITHIN THE PROPOSED WORK AREAS.
- TRUE NORTH SHALL BE DETERMINED BY CONTRACTOR. CONTRACTOR IS RESPONSIBLE FOR PROPER AZIMUTH ALIGNMENT.
- THE CONTRACTOR SHALL CONTACT THE TELECOMMUNICATIONS CARRIER TO ACQUIRE THE LATEST RF DATA SHEET PRIOR TO THE START OF CONSTRUCTION. RF INFORMATION ISSUED BY THE TELECOMMUNICATIONS CARRIER SUPERSEDES INFORMATION CONTAINED HEREIN. CONTACT ENGINEER IMMEDIATELY IF DESIGN CHANGED ARE REQUIRED.
- ROUTING IS DIAGRAMMATIC AND CONTRACTOR IS TO UTILIZE BEST POSSIBLE ROUTING TO EXPEDITE CONSTRUCTION PROCESS. CONTRACTOR SHALL BE RESPONSIBLE FOR COORDINATING FIELD CHANGES WITH THE AUTHORITY HAVING JURISDICTION.
- ALL DISTURBED AREAS SHALL BE RESTORED TO THEIR PREVIOUS CONDITION UPON COMPLETION OF EACH PHASE OF WORK.
- CONTRACTOR SHALL KEEP SITE CLEAN AND ORDERLY AT ALL TIMES.
- GROUND RING INSTALLATION TO BE COMPLETED IN ONE SHIFT. CONTRACTOR IS RESPONSIBLE FOR PEDESTRIAN PROTECTION AROUND TRENCH.
- CONTRACTOR SHALL COORDINATE WITH THE AUTHORITY HAVING JURISDICTION OF THE ADJACENT ROADWAY TO DETERMINE IF PERMITS ARE REQUIRED TO WORK IN THE RIGHT OF WAY AND IF TRAFFIC CONTROL IS REQUIRED. CONTRACTOR SHALL OBTAIN AND COMPLY WITH ANY REQUIRED PERMITS.

MATERIAL NOTES:

- ALL EQUIPMENT, CONDUCTORS, AND DEVICES SHALL COMPLY WITH NESC (LATEST EDITION) REQUIREMENTS AND LOCAL UTILITY SPECIFICATIONS.
- ALL EQUIPMENT, RACEWAY, CABLES, AND CONDUCTORS SHALL BE PROPERLY ATTACHED TO THE UTILITY POLE OR LIGHTING FIXTURE PER NESC REQUIREMENTS AND LOCAL UTILITY SPECIFICATIONS
- ALL GROUND SHALL BE IN ACCORDANCE WITH NESC REQUIREMENTS AND LOCAL UTILITY SPECIFICATIONS. GROUND CONDUCTORS SHALL NOT BE SMALLER THAN #6 AWG COPPER, UNLESS OTHERWISE SPECIFIED
- BOLT HOLES SHALL BE PUNCHED OR DRILLED. FLAME CUT HOLES ARE NOT ACCEPTABLE.
- INSTALL ALL EQUIPMENT AND DEVICES PLUMB AND LEVEL, ACCURATELY FITTED, AND FREE FROM DISTORTIONS AND/OR DEFECTS.
- NOTIFY THE ENGINEER PRIOR TO FIELD CUTTING OR MODIFYING APPROVED EQUIPMENT.
- ALL BOLTS, ANCHORS, AND MISCELLANEOUS HARDWARE SHALL BE GALVANIZED IN ACCORDANCE WITH ASTM A153 - ZINC COATING (HOT-DIP) FOR IRON AND STEEL HARDWARE.
- ALL ELECTRICAL EQUIPMENT SHALL BE HOUSED IN NEMA 3R ENCLOSURES.

OPERATIONAL SAFETY PROCEDURES

- INTERFERENCE WITH ANY JCP&L COMMUNICATION OR DISTRIBUTION AUTOMATION RADIO SYSTEM WILL NOT BE PERMITTED. THE RADIO SYSTEM IS THE PRIMARY COMMUNICATION FOR EMPLOYEES OF JCP&L AND IS ESSENTIAL FOR RESPONSE TO EMERGENCIES. THIS NON-INTERFERENCE CLAUSE SHALL APPLY EVEN IF THE JCP&L RADIO EQUIPPED VEHICLE OR HANDHELD UNIT IS TEMPORARILY LOCATED NEAR THE ANTENNA SYSTEM WHILE PERFORMING WORK.
- THE LICENSEE IS RESPONSIBLE FOR PLACING A SIGN ON THE POWER SUPPLY INDICATING A 24 HOUR CONTACT TELEPHONE NUMBER IN CASE OF EMERGENCY. THE PHONE NUMBER MUST BE VISIBLE FROM THE GROUND AND THE SIGN MUST BE MADE FROM A NON-METALLIC, EASILY READABLE, ULTRA VIOLET (UV) RESISTANT MATERIAL. SEE ITEM 9 POLE MOUNTED SIGN ON PAGE S3.
- A WARNING SIGN IS TO BE PLACED ON THE POWER SUPPLY BY THE LICENSEE REGARDING RF EMISSIONS IN ACCORDANCE WITH IEEE C95.2-2005, VIZ: 29 C.F.R.OSHA § 1910.268(p)(2), AND CONSISTENT WITH THE REQUIREMENTS OUTLINED IN THE RF STUDY INCLUDED WITH THIS SUBMITTAL.
- THE LICENSEE'S POWER SUPPLY MUST BE EQUIPPED WITH AN ACCESSIBLE LOAD CENTER WITHIN THE POLE, THAT CONTAINS A MAIN CIRCUIT BREAKER BETWEEN THE POWER SOURCE AND THE TRANSCEIVER. THE LICENSEE'S MAIN CIRCUIT BREAKER MUST CUTOFF AC POWER TO THE TRANSCEIVER. THE LOAD CENTER WITH MAIN CIRCUIT BREAKER WILL BE EQUIPPED WITH AN EXTERNAL INDICATOR LIGHT AND A PROVISIONAL TEST POINT THAT WILL VERIFY THE ANTENNA SYSTEM HAS BEEN RENDERED INOPERABLE. ALL ASPECTS OF THE TOTAL INSTALLATION SHALL BE IN ADHERENCE TO CURRENT EDITIONS OF BOTH THE NESC AND THE NEC. SEE ITEM 2 LOAD CENTER WITH MASTER CIRCUIT BREAKER ON PAGE S5.



Shelbourne at Hunterdon
53 Frontage Road, Suite 260
Hampton, NJ 08827
Ph 908.323.2513 Fax 908.323.2525

STATE OF NEW JERSEY
COLLEEN CONNOLLY
Professional Engineer No. 24GE04133700
NJ PROFESSIONAL ENGINEER # 24GE04133700

IT IS A VIOLATION OF THE LAW FOR ANY PERSON, UNLESS ACTING UNDER THE DIRECTION OF A LICENSED ENGINEER, TO ALTER THIS DOCUMENT IN ANY WAY. SIGNATURE AND SEAL NOT VALID UNLESS ORIGINAL.

APPLICANT:



CONTRACTOR SHALL CONTACT SDG PRIOR TO ORDERING MATERIALS OR BEGINNING CONSTRUCTION TO ENSURE THAT THEY HAVE THE LATEST REVISION OF THE CONSTRUCTION DOCUMENTS.

0	ISSUED FOR CONSTRUCTION	03/23/21	RR
NO.	ISSUE OR REVISION	DATE	BY

PROJECT TITLE:

CONSTRUCTION DOCUMENT

SITE NAME:
JS SEASIDE PARK 12 SC

[NEAREST TO]
144 K ST
SEASIDE PARK, NJ
OCEAN COUNTY

SDG PROJECT #: 20TIL031

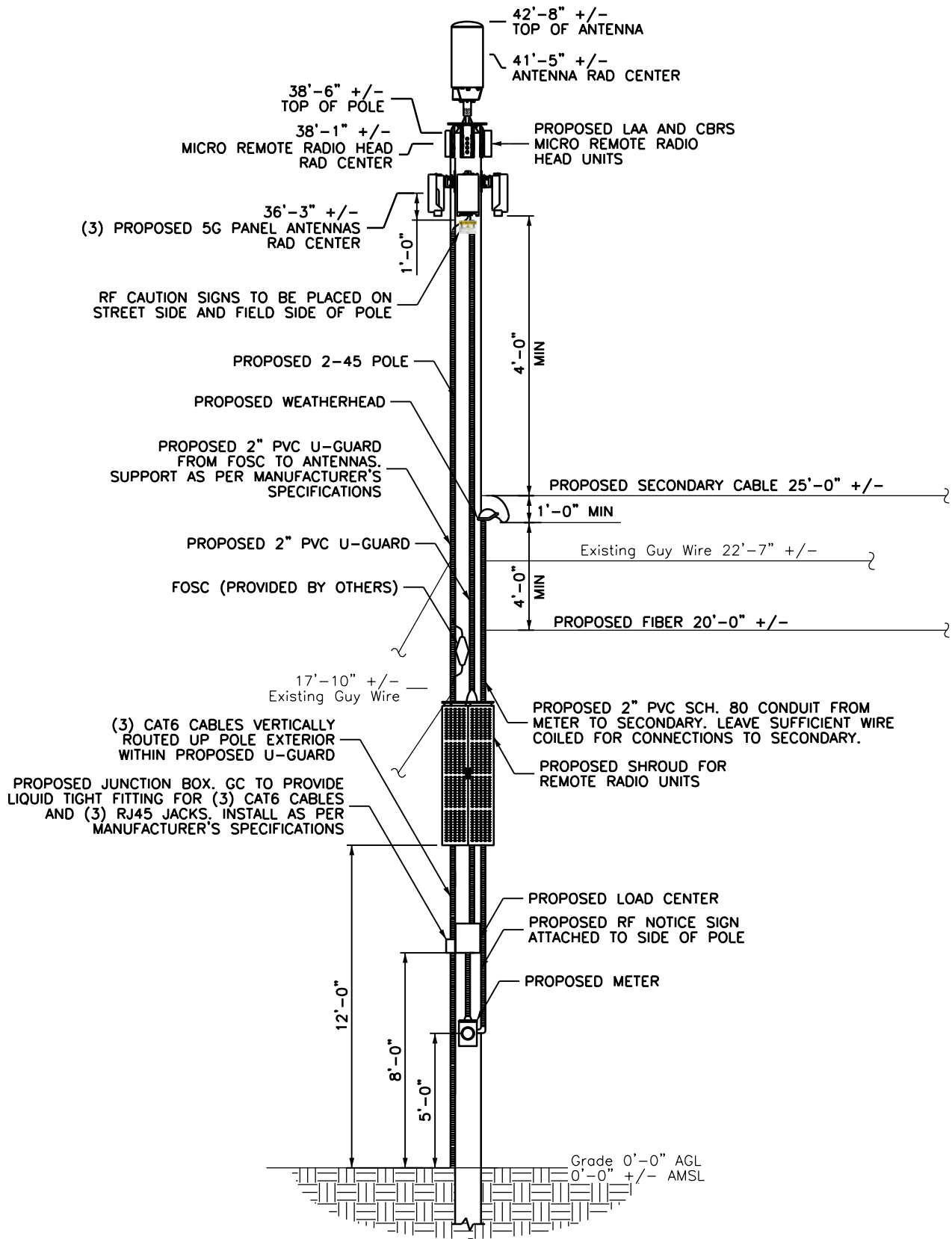
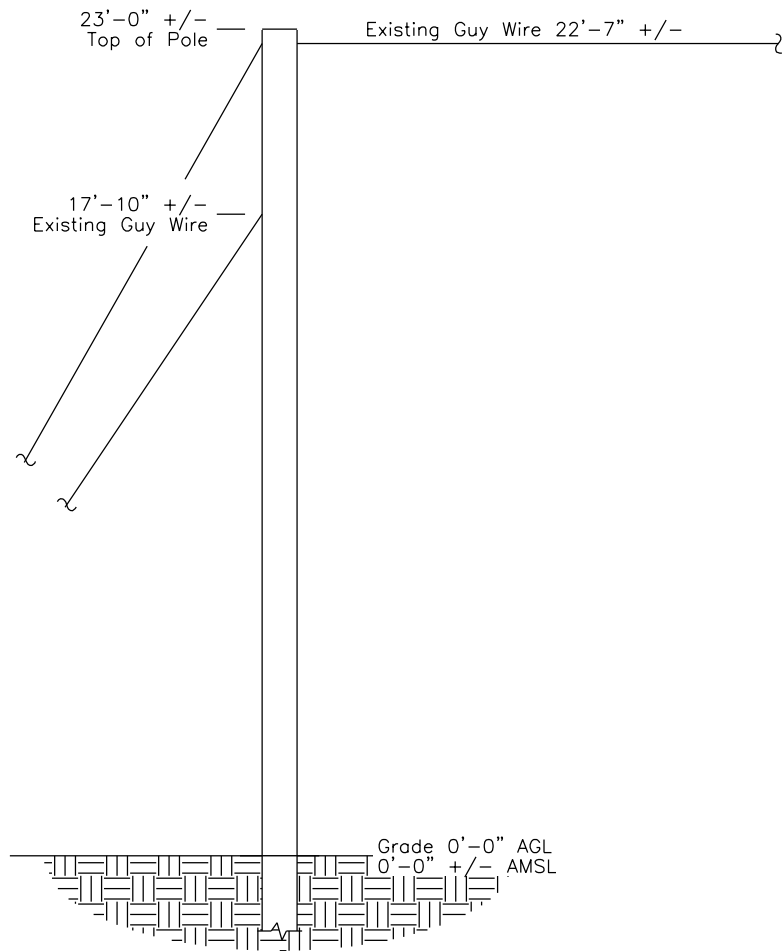
SCALE: AS NOTED DATE: 11/05/20

DRAWING TITLE:

SITE PLAN
AND GENERAL NOTES

DRAWING NO.: PAGE NO.:

S1 2 of 7



NOTE: EXISTING 23'-0" +/- POLE
TO BE REPLACED WITH 2-45 POLE



Shelbourne at Hunterdon
53 Frontage Road, Suite 260
Hampton, NJ 08827
Ph 908.323.2513 Fax 908.323.2525



COLLEEN CONNOLLY
NJ PROFESSIONAL ENGINEER # 24GE04133700
IT IS A VIOLATION OF THE LAW FOR ANY PERSON,
UNLESS ACTING UNDER THE DIRECTION OF A LICENSED
ENGINEER, TO ALTER THIS DOCUMENT IN ANY WAY.
SIGNATURE AND SEAL NOT VALID UNLESS ORIGINAL.

APPLICANT:



CONTRACTOR SHALL CONTACT SDG PRIOR TO ORDERING
MATERIALS OR BEGINNING CONSTRUCTION TO ENSURE
THAT THEY HAVE THE LATEST REVISION OF THE
CONSTRUCTION DOCUMENTS.

0	ISSUED FOR CONSTRUCTION	03/23/21	RR
NO.	ISSUE OR REVISION	DATE	BY

PROJECT TITLE:

CONSTRUCTION DOCUMENT

SITE NAME:
JS SEASIDE PARK 12 SC

[NEAREST TO]
144 K ST
SEASIDE PARK, NJ
OCEAN COUNTY


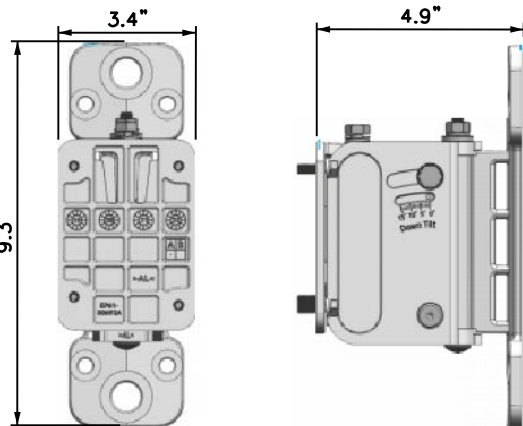
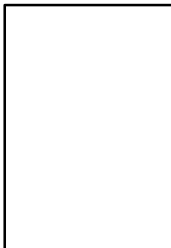
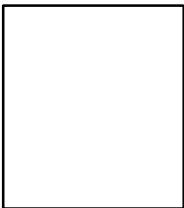

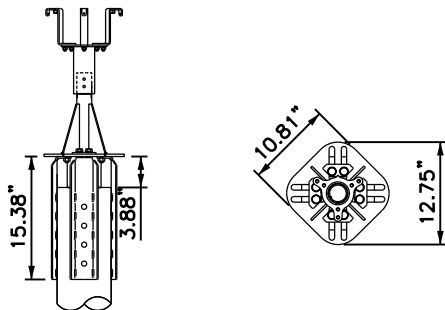
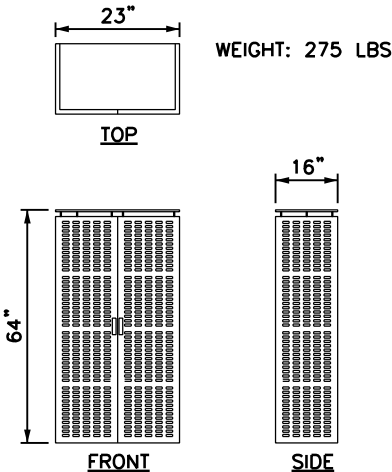
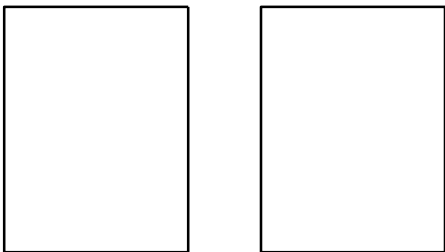

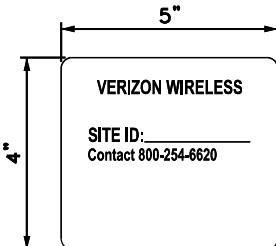

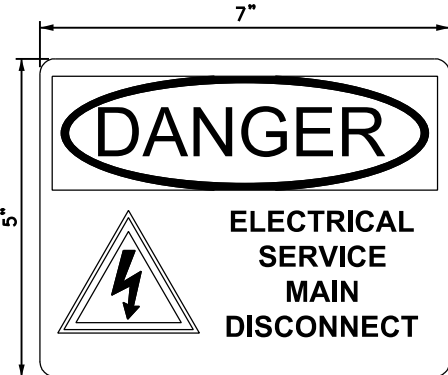
SDG PROJECT #: 20TIL031




SCALE: AS NOTED DATE: 11/05/20

DRAWING TITLE:

ELEVATIONS

DRAWING NO.:	PAGE NO.:
S2	3 of 7

<div></div> <div>DIMENSIONS (HxW): 28.7" x 12" WEIGHT: 26.7 LBS</div> <div><table><tr><td>RF CONFIGURATION</td></tr><tr><td>ELECTRICAL TILT: 0°</td></tr><tr><td>MECHANICAL TILT: 0°</td></tr><tr><td>PROPOSED ANTENNA ORIENTATION:0°</td></tr></table></div>		RF CONFIGURATION	ELECTRICAL TILT: 0°	MECHANICAL TILT: 0°	PROPOSED ANTENNA ORIENTATION:0°	<div></div>		<div>MICRO RRH (CBRS)</div> <div>DIMENSIONS (HxWxD): 8.55" X 4.15" X 13.91"</div> <div>WEIGHT: 18.64 LBS</div> <div>CONNECTION: 2 CPRI PORTS, 1 PORT FOR EXTERNAL ALARM</div> <div>MICRO RRH (LAA)</div> <div>DIMENSIONS (HxWxD): 8.9" X 3" X 9.1"</div> <div>WEIGHT: 11.0 LBS</div> <div>CONNECTION: 2 CPRI PORTS, 1 PORT FOR EXTERNAL ALARM</div> <div><div></div><div>CBRS</div><div></div><div>LAA</div></div>			
RF CONFIGURATION											
ELECTRICAL TILT: 0°											
MECHANICAL TILT: 0°											
PROPOSED ANTENNA ORIENTATION:0°											
1ANTENNA SPECIFICATION		2ANTENNA BRACKET SPECIFICATION		3MICRO REMOTE UNIT SPECIFICATIONS							
11x17 SCALE: NTS22x34 SCALE: NTS		11x17 SCALE: NTS22x34 SCALE: NTS		11x17 SCALE: NTS22x34 SCALE: NTS							
<div></div> <div>ANTENNA SPEC</div> <div>MAX DIMENSIONS (HxWxD): 18.5" X 9.6" X 6.9" (INCLUDES INTEGRATED RADIO)</div> <div>MAX WEIGHT: 35 LBS</div> <div><table><tr><td>RF CONFIGURATION</td></tr><tr><td>ELECTRICAL TILT: 0°</td></tr><tr><td>MECHANICAL TILT: 0°</td></tr><tr><td>PROPOSED ANTENNA ORIENTATION:115°, 190°, 275°</td></tr></table></div>		RF CONFIGURATION	ELECTRICAL TILT: 0°	MECHANICAL TILT: 0°	PROPOSED ANTENNA ORIENTATION:115°, 190°, 275°	<div></div> <div>FRONT TOP</div> <div>ANTENNA MOUNTING DETAIL CONCEALFAB 5' POLETOP MOUNTING BRACKET OR EQUAL PART#: 007960-3-3</div>		<div></div> <div>TOP</div> <div>FRONT SIDE</div> <div>RADIO SHROUD DETAIL CONCEALFAB LEAN CABINET OR EQUAL</div> <div>WEIGHT: 275 LBS</div>		<div></div> <div>RRH (AWS/PCS) RRH (AWS/PCS) RRH (700/850)</div> <div>DIMENSIONS (HxWxD): 15" X 15" X 10"</div> <div>WEIGHT: 84.4 LBS</div> <div>CONNECTION: 8 ANTENNA PORTS, 4 PORTS FOR EXTERNAL ALARM</div> <div>RRH (700/850)</div> <div>DIMENSIONS (HxWxD): 15" X 15" X 8.1"</div> <div>WEIGHT: 70.3 LBS</div> <div>CONNECTION: 4 ANTENNA PORTS, 4 PORTS FOR EXTERNAL ALARM</div>	
RF CONFIGURATION											
ELECTRICAL TILT: 0°											
MECHANICAL TILT: 0°											
PROPOSED ANTENNA ORIENTATION:115°, 190°, 275°											
4ANTENNA SPECIFICATION		5ANTENNA MOUNT SPECIFICATION		6SHROUD SPECIFICATION		7REMOTE UNIT SPECIFICATION					
11x17 SCALE: NTS22x34 SCALE: NTS		11x17 SCALE: NTS22x34 SCALE: NTS		11x17 SCALE: NTS22x34 SCALE: NTS		11x17 SCALE: NTS22x34 SCALE: NTS					
<div></div> <div>6"H</div> <div>7.5"W</div> <div>NOTES:</div> <div>1) ANTENNA SIGNAGE ATTACHED ON: WOOD POLES = SIGN ON ALUMINUM WITH STAINLESS STEEL SCREWS. METAL POLES = ADHESIVE VINYL OR PLACARD STRAPPED WITH STAINLESS STEEL SCREWS. CONCRETE/COMPOSITE = PLACARD STRAPPED WITH STAINLESS STEEL TIES. FIBERGLASS = PLACARD STRAPPED WITH STAINLESS STEEL TIES. 2) AFFIX SIGN TO THE STRUCTURE 8'-0" ABOVE GRADE. 3) SIZE APPROX. 8" X 6".</div>		<div></div> <div>5"</div> <div>4"</div> <div>VERIZON WIRELESS</div> <div>SITE ID: _____ Contact 800-254-6620</div> <div>NOTES:</div> <div>1) SIGN TO BE INSTALLED ON THE SAME POLE NEXT TO THE DISCONNECT.</div> <div>2) SIGN ON ALUMINUM WITH STAINLESS STEEL SCREW TO THE POLE.</div> <div>3) THE SIGN MUST BE LOCATED ON BOTH SIDES OF THE POLE SO IT CAN BE RECOGNIZED FROM EITHER APPROACH</div> <div>4) THE SIGN MUST BE COMPLETELY READABLE FROM OUTSIDE THE DANGER ZONE.</div>		<div></div> <div>8"</div> <div>5"</div> <div>NOTES:</div> <div>1) ANTENNA SIGNAGE ATTACHED ON: WOOD POLES = SIGN ON ALUMINUM WITH STAINLESS STEEL SCREWS. METAL POLES = ADHESIVE VINYL OR PLACARD STRAPPED WITH STAINLESS STEEL SCREWS. CONCRETE/COMPOSITE = PLACARD STRAPPED WITH STAINLESS STEEL TIES. FIBERGLASS = PLACARD STRAPPED WITH STAINLESS STEEL TIES. 2) AFFIX SIGN TO THE STRUCTURE AS PER EME REPORT. AFFIX A SECOND SIGN (VINYL ADHESIVE) TO THE POWER SUPPLY BOX. 3) SIZE APPROX. 8" X 5". 4) THE SIGN MUST BE LOCATED ON BOTH SIDES OF THE POLE SO IT CAN BE RECOGNIZED FROM EITHER APPROACH 5) THE SIGN MUST BE COMPLETELY READABLE FROM OUTSIDE THE DANGER ZONE.</div>		<div></div> <div>7"</div> <div>5"</div> <div>NOTES:</div> <div>1) SIGN TO BE INSTALLED ON DISCONNECT BOX.</div> <div>2) SIGN ON VINYL WITH ADHESIVE BACKING.</div> <div>3) NO BACKUP DC POWER SUPPLY IS AVAILABLE FOR THIS SYSTEM.</div>					
8RF SIGNAGE		9POLE MOUNTED SIGN		10RF CAUTION SIGN		11DISCONNECT WARNING SIGNS					
11x17 SCALE: NTS22x34 SCALE: NTS		11x17 SCALE: NTS22x34 SCALE: NTS		11x17 SCALE: NTS22x34 SCALE: NTS		11x17 SCALE: NTS22x34 SCALE: NTS					

<div> SCHERER DESIGN GROUP, LLC</div> <div>Shelbourne at Hunterdon 53 Frontage Road, Suite 260 Hampton, NJ 08827 Ph 908.323.2543 Fax 908.323.2525</div> <div> NJ PROFESSIONAL ENGINEER #24GE04133700</div> <div>IT IS A VIOLATION OF LAW FOR ANY PERSON, UNLESS ACTING UNDER THE DIRECTION OF A LICENSED ENGINEER, TO ALTER THIS DOCUMENT IN ANY WAY. SIGNATURE AND SEAL NOT VALID UNLESS ORIGINAL.</div>			
APPLICANT:			
<div></div>			
<div>CONTRACTOR SHALL CONTACT SDG PRIOR TO ORDERING MATERIALS OR BEGINNING CONSTRUCTION TO ENSURE THAT THEY HAVE THE LATEST REVISION OF THE CONSTRUCTION DOCUMENTS.</div>			
0	ISSUED FOR CONSTRUCTION	03/23/21	RR
NO.	ISSUE OR REVISION	DATE	BY
PROJECT TITLE:			
CONSTRUCTION DOCUMENT			
SITE NAME: JS SEASIDE PARK 12 SC [NEAREST TO] 144 K ST SEASIDE PARK, NJ OCEAN COUNTY			
SDG PROJECT #: 20TIL031			
SCALE: AS NOTED		DATE: 11/05/20	
DRAWING TITLE:			
DETAILS			
DRAWING NO.:		PAGE NO.:	
S3		4 of 7	

CARLON JUNCTION BOX
PART # NS664
(OR APPROVED EQUAL)

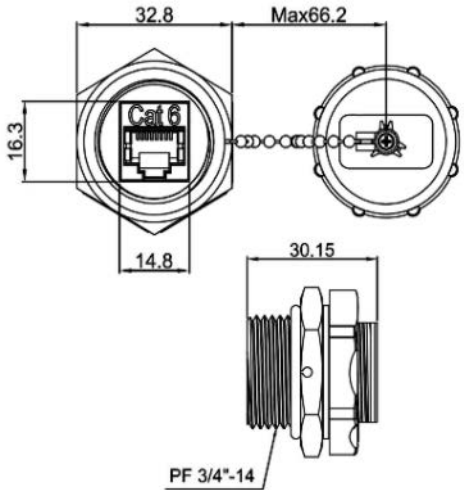
DIMENSIONS (HxWxD): 6" X 6" X 4"

WEIGHT: 2.38 lbs

QUANTITY: 1



INSTALLERPARTS CAT 6 RJ45 SHIELDED
INDUSTRIAL PANELMOUNT BULKHEAD
COUPLER WITH DUST CAP
PART # 15881
(OR APPROVED EQUAL)



1	JUNCTION BOX SPECIFICATION		2	R4J45 JACK SPECIFICATION	
11x17 SCALE: NTS		22x34 SCALE: NTS	11x17 SCALE: NTS		22x34 SCALE: NTS



Shelbourne at Hunterdon
53 Frontage Road, Suite 260
Hampton, NJ 08827
Ph 908.323.2525 Fax 908.323.2525

Colleen Connolly
NJ PROFESSIONAL ENGINEER
No. 24GE04133700
24GE04133700

COLLEEN CONNOLLY
NJ PROFESSIONAL ENGINEER 24GE04133700

IT IS A VIOLATION OF THE LAW FOR ANY PERSON,
UNLESS ACTING UNDER THE DIRECTION OF A LICENSED
ENGINEER, TO ALTER THIS DOCUMENT IN ANY WAY.
SIGNATURE AND SEAL NOT VALID UNLESS ORIGINAL.

APPLICANT:

verizon

CONTRACTOR SHALL CONTACT SDG PRIOR TO ORDERING MATERIALS OR BEGINNING CONSTRUCTION TO ENSURE THAT THEY HAVE THE LATEST REVISION OF THE CONSTRUCTION DOCUMENTS.

0	ISSUED FOR CONSTRUCTION	03/23/21	RR
NO.	ISSUE OR REVISION	DATE	BY

PROJECT TITLE:

CONSTRUCTION DOCUMENT

SITE NAME:
JS SEASIDE PARK 12 SC

[NEAREST TO]
144 K ST
SEASIDE PARK, NJ
OCEAN COUNTY

SDG PROJECT #: 20TIL031

SCALE: AS NOTED	DATE: 11/05/20
-----------------	----------------

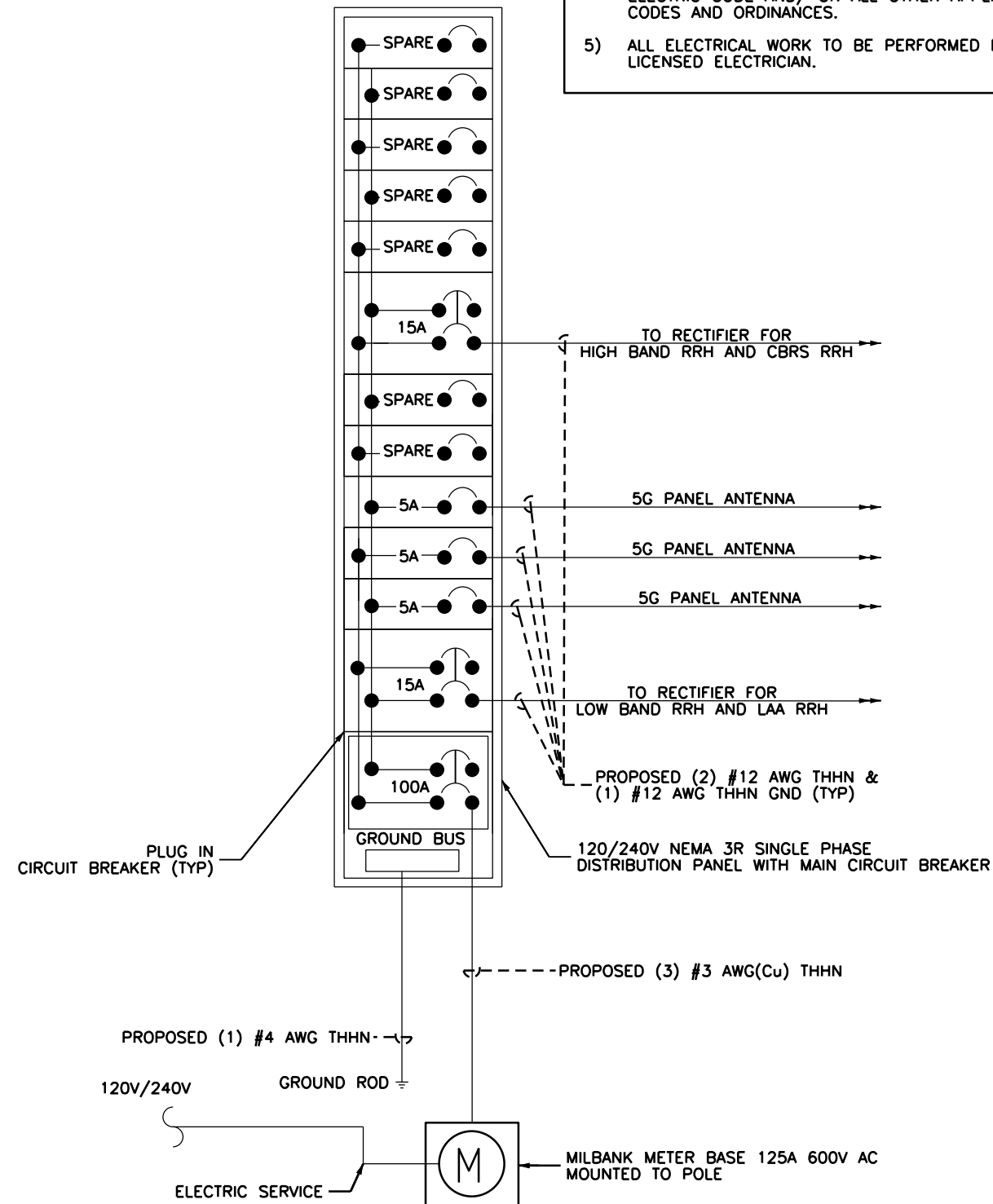
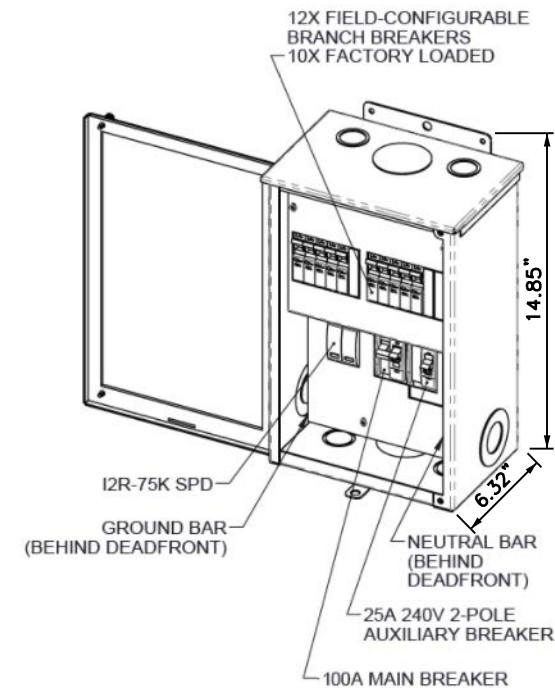
DRAWING TITLE:

DETAILS

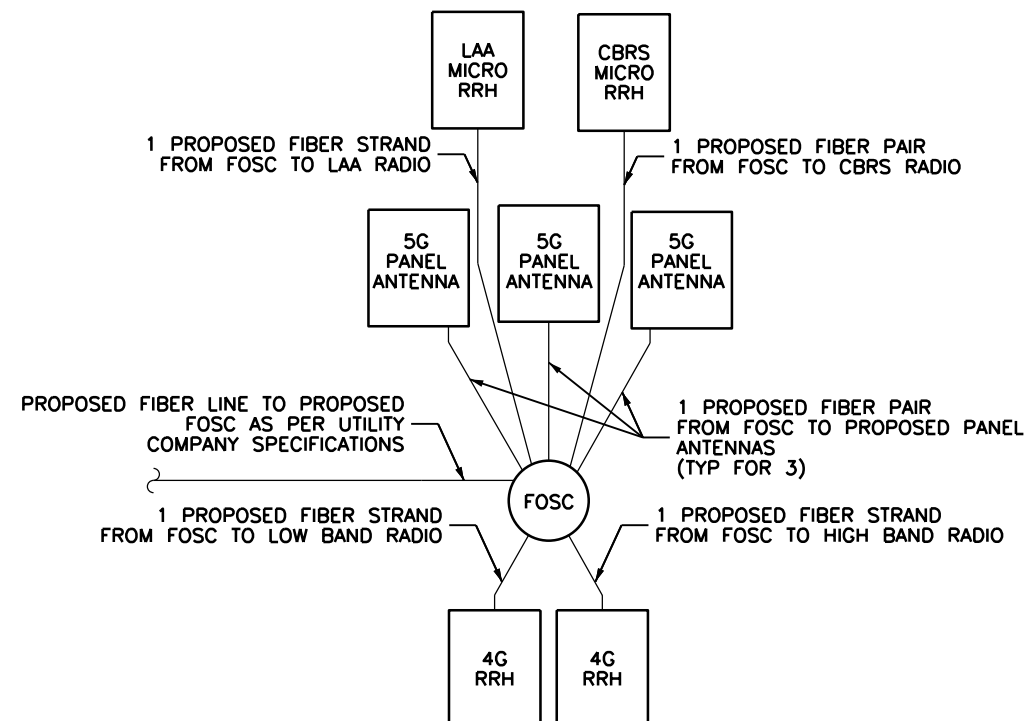
DRAWING NO.:	PAGE NO.:
S4	5 of 7

- 1) METER PAN, SERVICE DISCONNECT, AND LOAD CENTER SHALL BE LABELED WITH FAULT CURRENT WARNING AS PER NEC 2017.
- 2) SUPPORTING FAULT CURRENT CALCULATIONS MUST BE PERFORMED IN ACCORDANCE WITH NEC 110.24(A).
- 3) AISC RATING OF SERVICE DISCONNECT, LOAD CENTER, AND ALL CIRCUIT BREAKERS MUST COMPLY WITH FAULT CURRENT CALCULATIONS.
- 4) CONTRACTORS PERFORMANCE, WORKMANSHIP, AND MATERIALS SHALL COMPLY WITH LOCAL DEPARTMENTS AFFECTED BY CONNECTION OF SERVICES, OBTAIN AND PAY FOR ALL PERMITS. CONTRACTOR SHALL COMPLY WITH RULES AND REGULATIONS OF PUBLIC UTILITIES AND MUNICIPAL CONSTRUCTION CODES, NATIONAL ELECTRIC CODE AND/ OR ALL OTHER APPLICABLE CODES AND ORDINANCES.
- 5) ALL ELECTRICAL WORK TO BE PERFORMED BY A LICENSED ELECTRICIAN.

MAIN BREAKER SHORT
CIRCUIT RATING: 10kAIC



22x34 SCALE: NTS



22x34 SCALE: NTS



NEW JERSEY
COLLEEN CONNOLLY
No. 24GE04133700

COLLEEN CONNOLLY
NJ PROFESSIONAL ENGINEER # 246E0133700
IT IS A VIOLATION OF THE LAW FOR ANY PERSON,
UNLESS ACTING UNDER THE DIRECTION OF A LICENSED
ENGINEER, TO ALTER THIS DOCUMENT IN ANY WAY.
SIGNATURE AND SEAL NOT VALID UNLESS ORIGINAL.

APPLICANT:



CONTRACTOR SHALL CONTACT SDG PRIOR TO ORDERING MATERIALS OR BEGINNING CONSTRUCTION TO ENSURE THAT THEY HAVE THE LATEST REVISION OF THE CONSTRUCTION DOCUMENTS.

0	ISSUED FOR CONSTRUCTION	03/23/21	RR
NO.	ISSUE OR REVISION	DATE	BY

PROJECT TITLE:

CONSTRUCTION DOCUMENT

SITE NAME:
JS SEASIDE PARK 12 SC

[NEAREST TO]
144 K ST
SEASIDE PARK, NJ
OCEAN COUNTY

SDG PROJECT #: 20TIL031

SCALE: AS NOTED

DATE: 11/05/20

DRAWING TITLE:

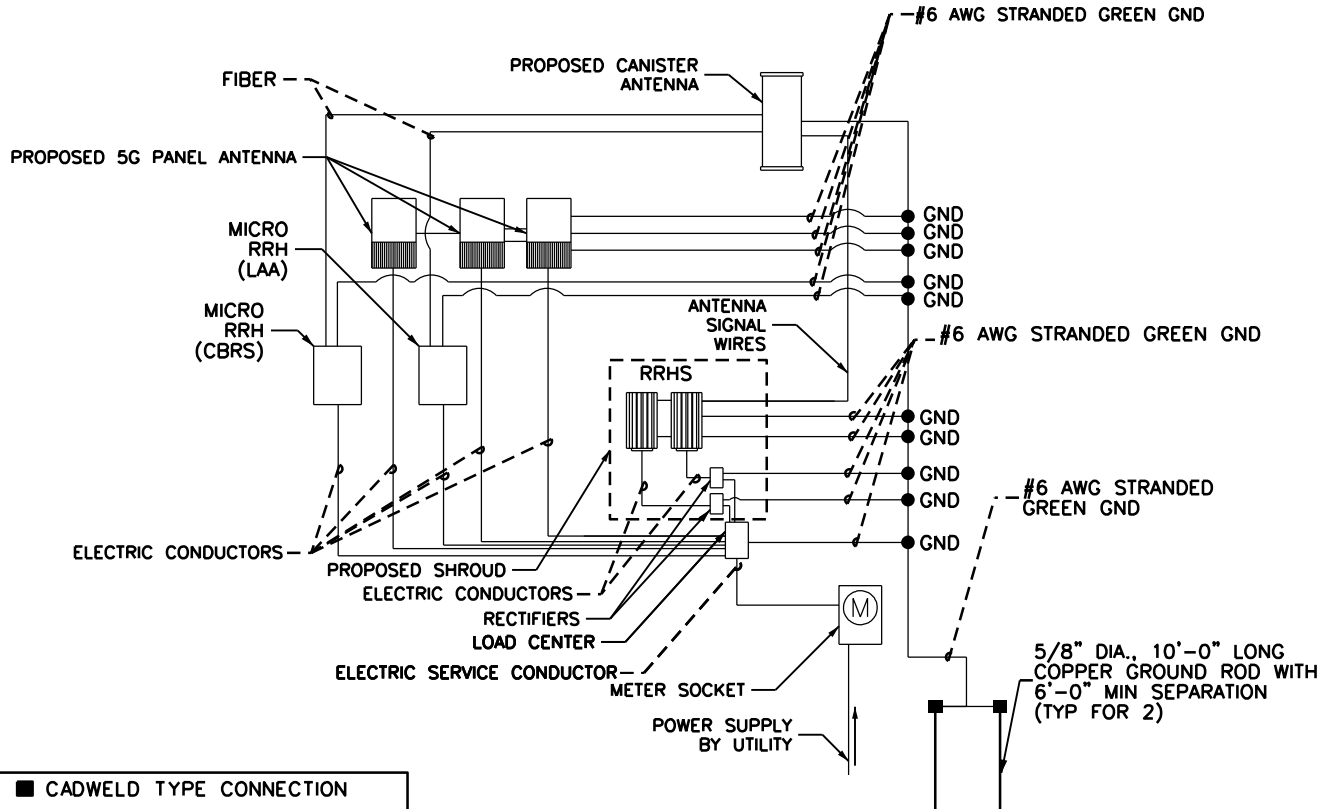
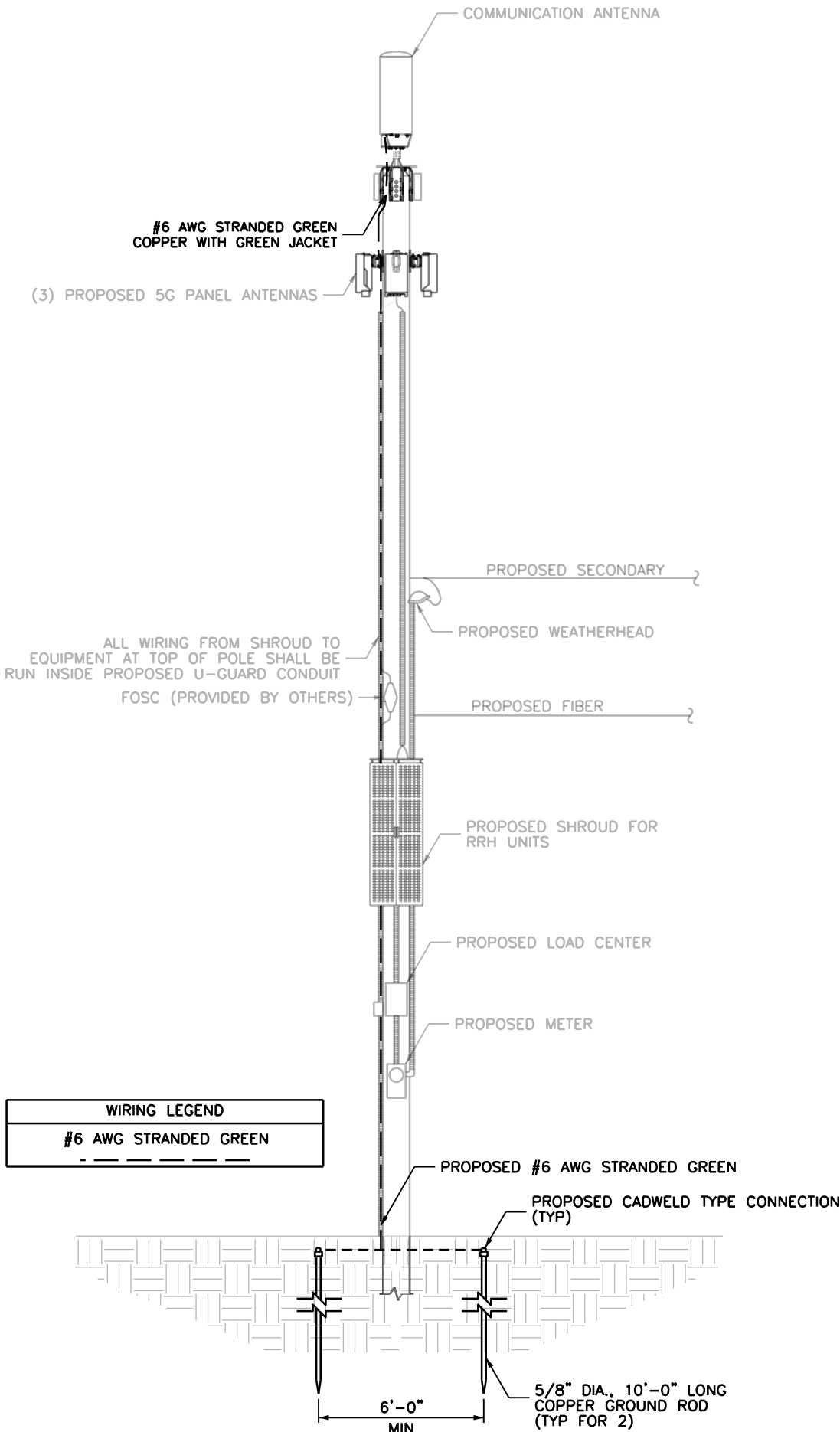
ONE LINE DIAGRAMS

DRAWING NO.:

PAGE NO.:

S5

6 of 7



- CADWELD TYPE CONNECTION
- COMPRESSION TYPE CONNECTION

2 GENERAL WIRING DIAGRAM

11x17 SCALE: NTS 22x34 SCALE: NTS

GROUNDING NOTES:

- 1) LICENSEE MUST PROVIDE SEPARATE GROUNDING FOR THEIR EQUIPMENT. LICENSEE WILL NOT BE ALLOWED TO ATTACH TO JCP&L'S GROUNDING SYSTEM, EXCEPT FOR A REMOVABLE BONDING JUMPER NEAR THE BASE OF THE POLE. THE REMOVABLE BONDING JUMPER SHALL PERMIT TESTING OF EACH GROUND AND WHEN BONDED TOGETHER ASSURES THAT EACH GROUND IS AT THE SAME POTENTIAL POINT.
- 2) GROUND RODS SHALL BE "COPPER WELD" STEEL, MINIMUM 5/8 INCH DIAMETER, AND 10 FOOT LENGTH WITH THE CAPABILITY TO ADD LENGTH IN ORDER TO DECREASED GROUND IMPEDANCE WHERE SUCH SOIL CONDITIONS REQUIRE IT.
- 3) THE GROUND CONDUCTOR SHALL BE MEDIUM HARD DRAWN, SOLID, INSULATED NO. 6 AWG COPPER AND SHALL MEET THE REQUIREMENTS OF ASTM B2. THE GROUND CONDUCTOR INSULATION THICKNESS SHALL BE 60 MILS OF UNFILLED, BLACK, CROSS LINKED POLYETHYLENE, TESTED IN ACCORDANCE WITH ICEA S-66-526, SECTION 3.7. THE MANUFACTURER'S NAME AND THE YEAR OF MANUFACTURE SHALL BE IMPRINTED ON THE CONDUCTOR AT INTERVALS OF APPROXIMATELY ONE FOOT. LICENSEE'S GROUND CONDUCTOR SHALL BE CLEARLY IDENTIFIED WITH A BRASS TAG OR OTHER ACCEPTABLE MEANS, ATTACHED TO THE CONDUCTOR AT THE BASE OF THE POLE, INDICATING LICENSEE'S IDENTIFICATION.
- 6) ALL CONNECTORS SHALL BE BRASS OF THE DESIGN THAT PERMITS CIRCUMFERENTIAL CLAMPING ON BOTH WIRE AND ROD ON ALL CONNECTIONS ALONG POLE EXTERIOR.
- 5) THE LICENSEE'S GROUNDING SYSTEM SHALL YIELD A GROUND RESISTANCE OF 25 OHMS OR LESS.
- 6) ALL METALLIC PARTS OF THE INSTALLATION ON THE POLE SHALL BE BONDED TOGETHER AND GROUNDED TO THE LICENSEE'S GROUNDING SYSTEM.
- 7) DISSIMILAR METAL CONNECTIONS MUST BE AVOIDED FOR ALL GROUNDING ATTACHMENTS MADE ALONG THE POLE.
- 8) ALL GROUND WIRES THROUGH THE NEUTRAL ZONE DOWN TO THE BASE OF THE POLE, ON SECONDARY POLES, SHALL BE COVERED WITH NON-METALLIC HEAVY WALL MOLDING TO PROVIDE PHYSICAL PROTECTION AND SECURED WITH STAPLES.

3 GROUNDING NOTES

11x17 SCALE: NTS 22x34 SCALE: NTS



Shelbourne at Hunterdon
53 Frontage Road, Suite 260
Hampton, NJ 08827
Ph 908.323.2513 Fax 908.323.2525

NEW JERSEY
Professional Engineer
No. 24GE04133700
Date 04/13/2021

NJ PROFESSIONAL ENGINEER #24GE04133700

IT IS A VIOLATION OF THE LAW FOR ANY PERSON, UNLESS ACTING UNDER THE DIRECTION OF A LICENSED ENGINEER, TO ALTER THIS DOCUMENT IN ANY WAY. SIGNATURE AND SEAL NOT VALID UNLESS ORIGINAL.

APPLICANT:

verizon

CONTRACTOR SHALL CONTACT SDG PRIOR TO ORDERING MATERIALS OR BEGINNING CONSTRUCTION TO ENSURE THAT THEY HAVE THE LATEST REVISION OF THE CONSTRUCTION DOCUMENTS.

0	ISSUED FOR CONSTRUCTION	03/23/21	RR
NO.	ISSUE OR REVISION	DATE	BY

PROJECT TITLE:

CONSTRUCTION DOCUMENT

SITE NAME:
JS SEASIDE PARK 12 SC

[NEAREST TO]
144 K ST
SEASIDE PARK, NJ
OCEAN COUNTY

SDG PROJECT #: 20TIL031

SCALE: AS NOTED DATE: 11/05/20

DRAWING TITLE:

GROUNDING DETAILS

DRAWING NO.: PAGE NO.:

G1 7 of 7