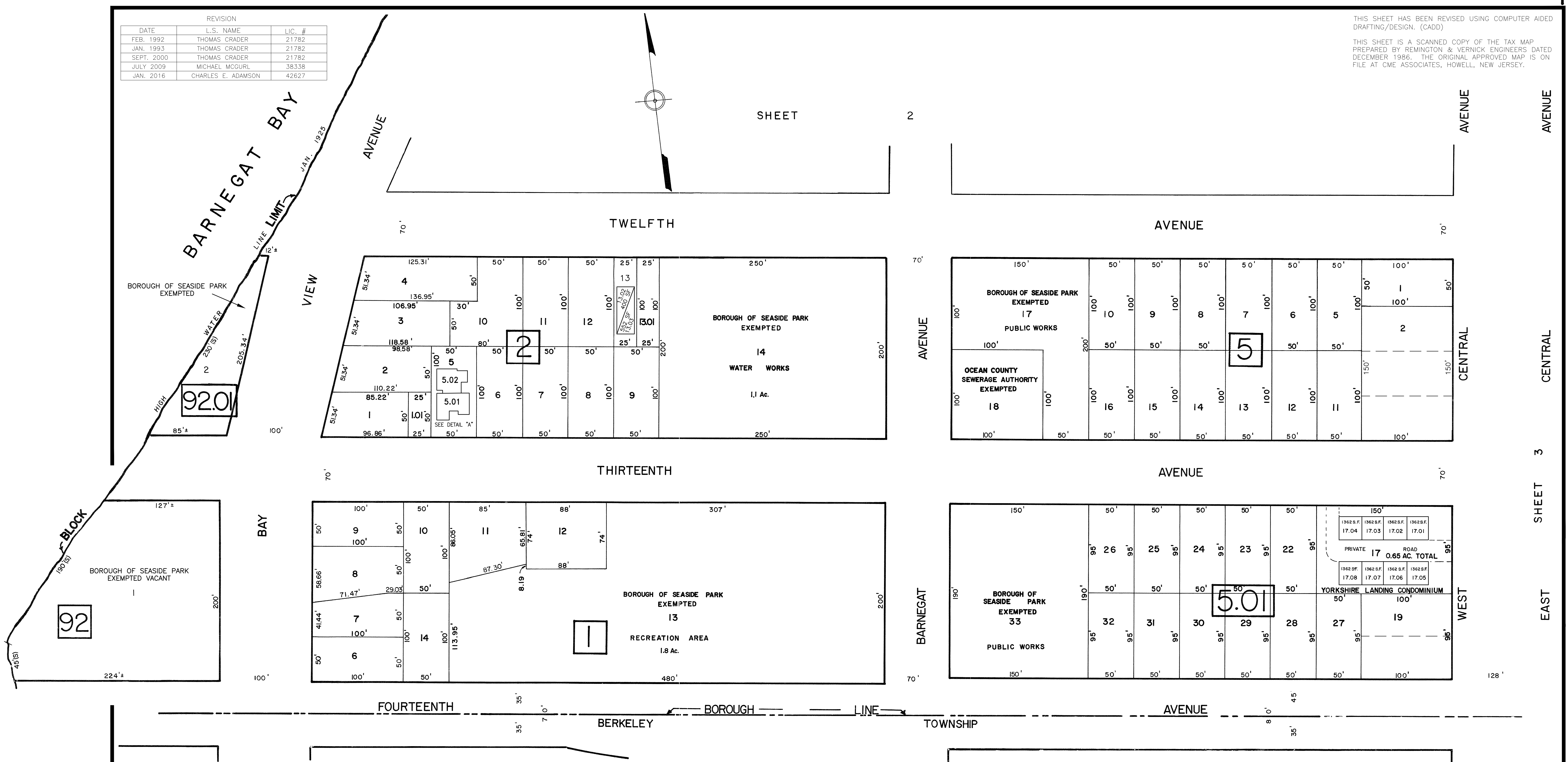


REVISION		
DATE	L.S. NAME	LIC. #
FEB. 1992	THOMAS CRADER	21782
JAN. 1993	THOMAS CRADER	21782
SEPT. 2000	THOMAS CRADER	21782
JULY 2009	MICHAEL MCGURL	38338
JAN. 2016	CHARLES E. ADAMSON	42627

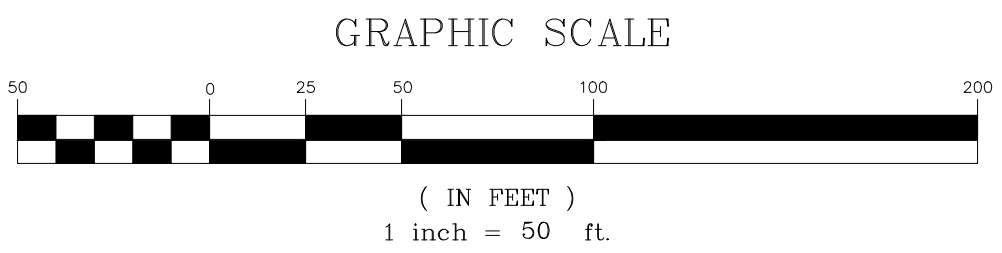
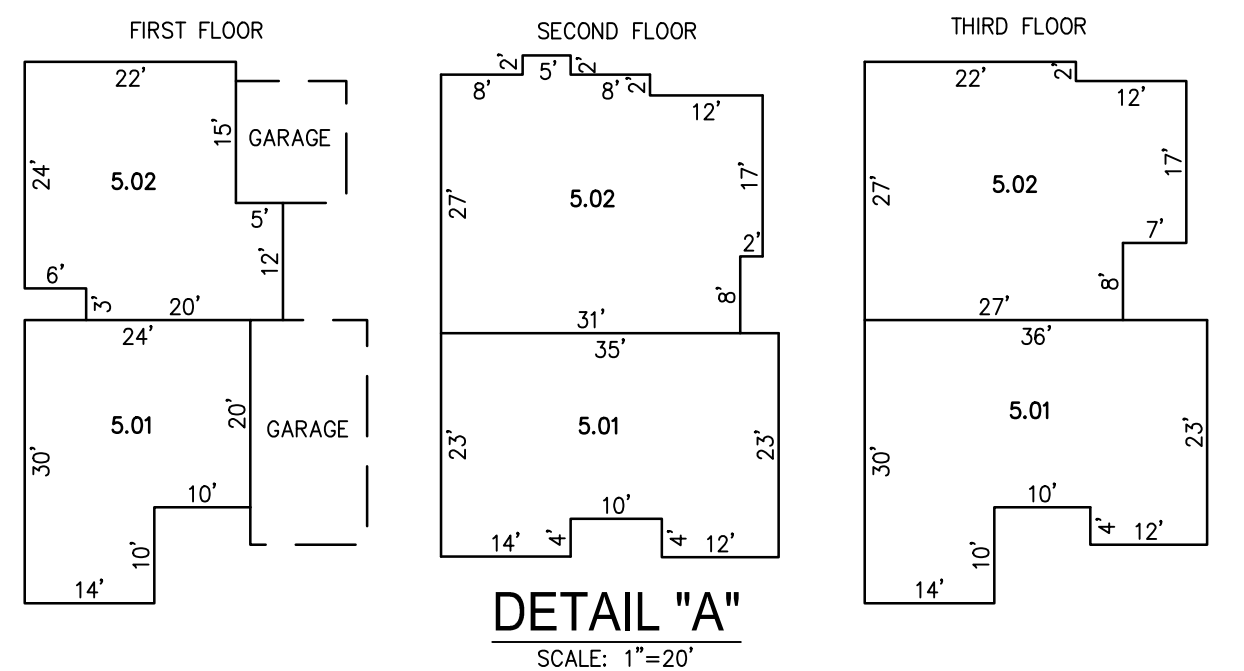
THIS SHEET HAS BEEN REVISED USING COMPUTER AIDED DRAFTING/DESIGN. (CADD)

THIS SHEET IS A SCANNED COPY OF THE TAX MAP PREPARED BY REMINGTON & VERNICK ENGINEERS DATED DECEMBER 1986. THE ORIGINAL APPROVED MAP IS ON FILE AT CME ASSOCIATES, HOWELL, NEW JERSEY.

SHEET 2



BLOCK NUMBER	LOT NUMBER	CONDO QUALIFIER	SQUARE FOOTAGE
2	5.01	C.A1	2240 SF.
2	5.02	C.A2	2374 SF.



NEW JERSEY DEPARTMENT OF THE TREASURY  
 DIVISION OF TAXATION  
 LOCAL PROPERTY BRANCH  
 APPROVED AS A TAX MAP PURSUANT TO THE PROVISIONS OF CHAPTER 175, LAWS OF 1913, ETC.  
 FOR THE DIRECTOR, DIVISION OF TAXATION

BY: *[Signature]*  
 LIC. #15434 ENGINEER, PROFESSIONAL P.E. & L.S.  
 DATE: MAY 7, 1987. SERIAL NO. 9-2-1

**TAX MAP**  
**BOROUGH OF SEASIDE PARK**  
 OCEAN COUNTY NEW JERSEY  
 SCALE DECEMBER 1986  
**CRAIG F. REMINGTON, L.S.**  
**REMINGTON & VERNICK ENGINEERS**  
 9 ALLEN STREET, TOMS RIVER, NEW JERSEY