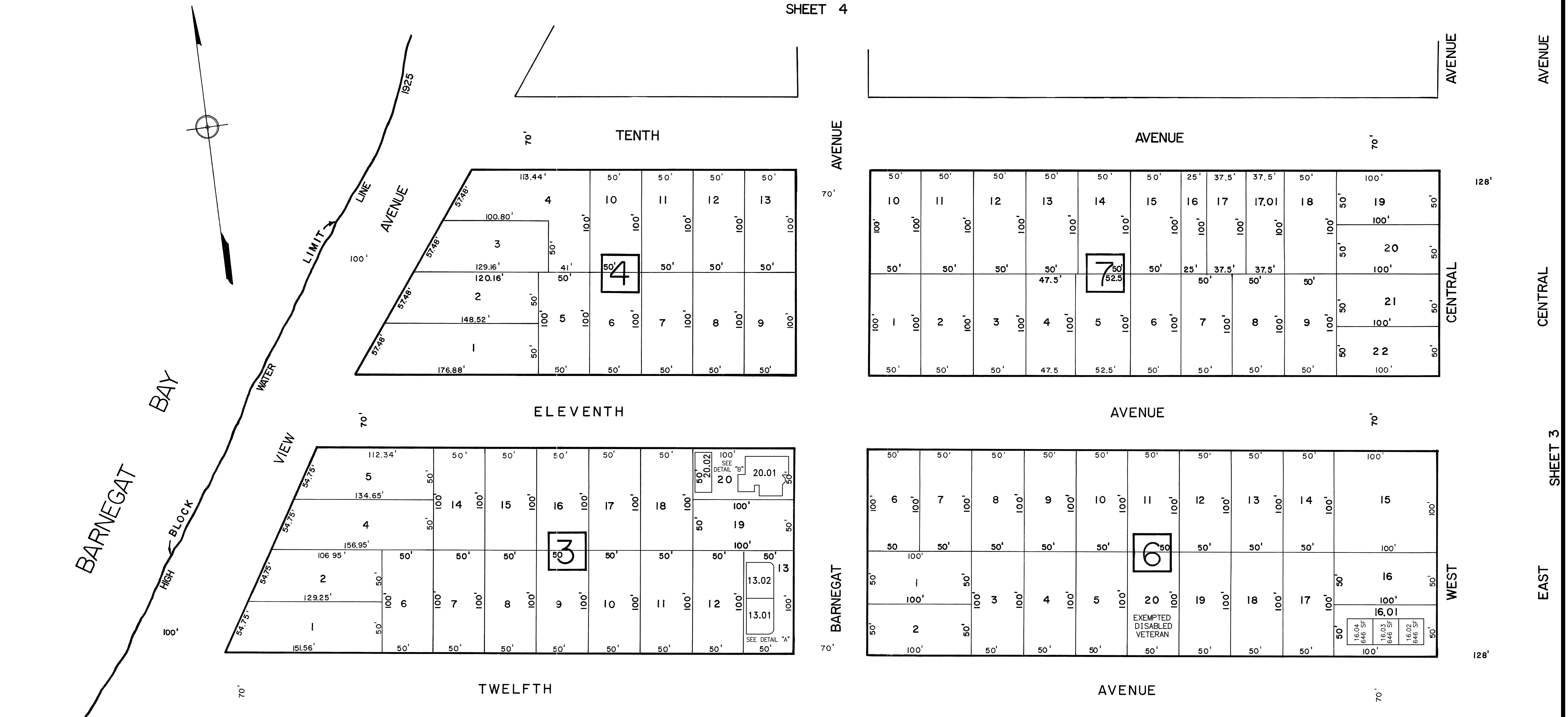


REVISION		
DATE	L.S. NAME	L.I.C. #
SEPT. 2000	THOMAS CRADER	21782
JULY 2009	MICHAEL MCGURL	38338
JAN. 2016	CHARLES E. ADAMSON	42627

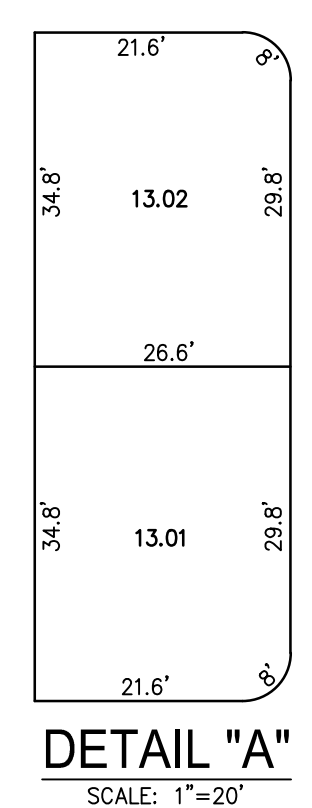
THIS SHEET HAS BEEN REVISED USING COMPUTER AIDED DRAFTING/DESIGN. (CADD)
 THIS SHEET IS A SCANNED COPY OF THE TAX MAP PREPARED BY REMINGTON & VERNICK ENGINEERS DATED DECEMBER 1986. THE ORIGINAL APPROVED MAP IS ON FILE AT CME ASSOCIATES, HOWELL, NEW JERSEY.

SHEET 4

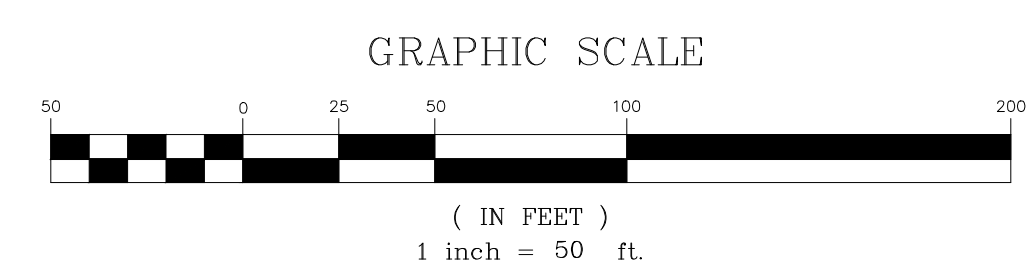
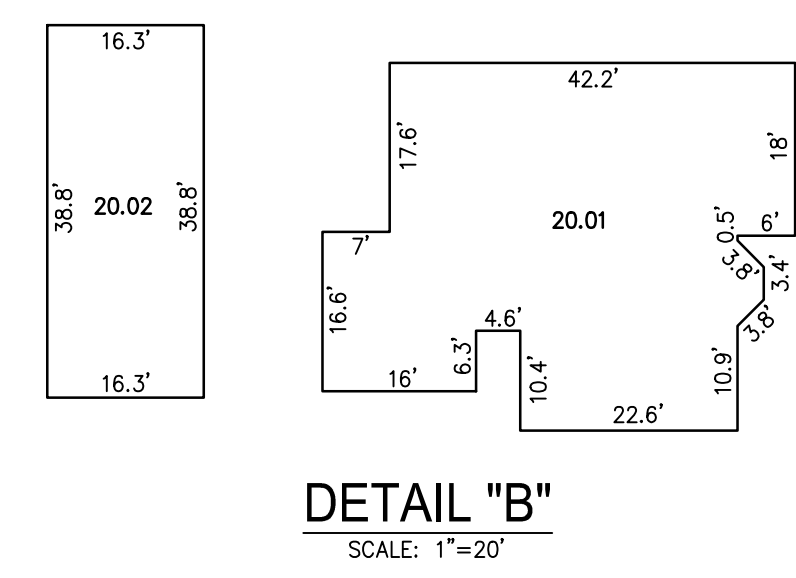


SHEET 1

BLOCK NUMBER	LOT NUMBER	CONDO QUALIFIER	SQUARE FOOTAGE
3	13.01	C.A1	2475 SF.
3	13.02	C.A2	2475 SF.



BLOCK NUMBER	LOT NUMBER	CONDO QUALIFIER	SQUARE FOOTAGE
3	20.01	C.A1	1740 SF.
3	20.02	C.A2	947 SF.



NEW JERSEY DEPARTMENT OF THE TREASURY
 DIVISION OF TAXATION
 LOCAL PROPERTY TAXATION
 APPROVED AS A TAX MAP PURSUANT TO THE PROVISIONS OF CHAPTER 173, LAWS OF 1974, ET SEQ. FOR THE DIRECTOR, DIVISION OF TAXATION
Alan J. [Signature]
 BY _____ P.E. & L.S.
 LIC. # 15494 _____ CHIEF, ENGINEERING SECTION
 DATE MAY 17, 1987 SERIAL NO. 627

TAX MAP
BOROUGH OF SEASIDE PARK
 OCEAN COUNTY NEW JERSEY
 SCALE DECEMBER 1986
CRAIG F. REMINGTON, L.S.
REMINGTON & VERNICK ENGINEERS
 9 ALLEN STREET, TOMS RIVER, NEW JERSEY