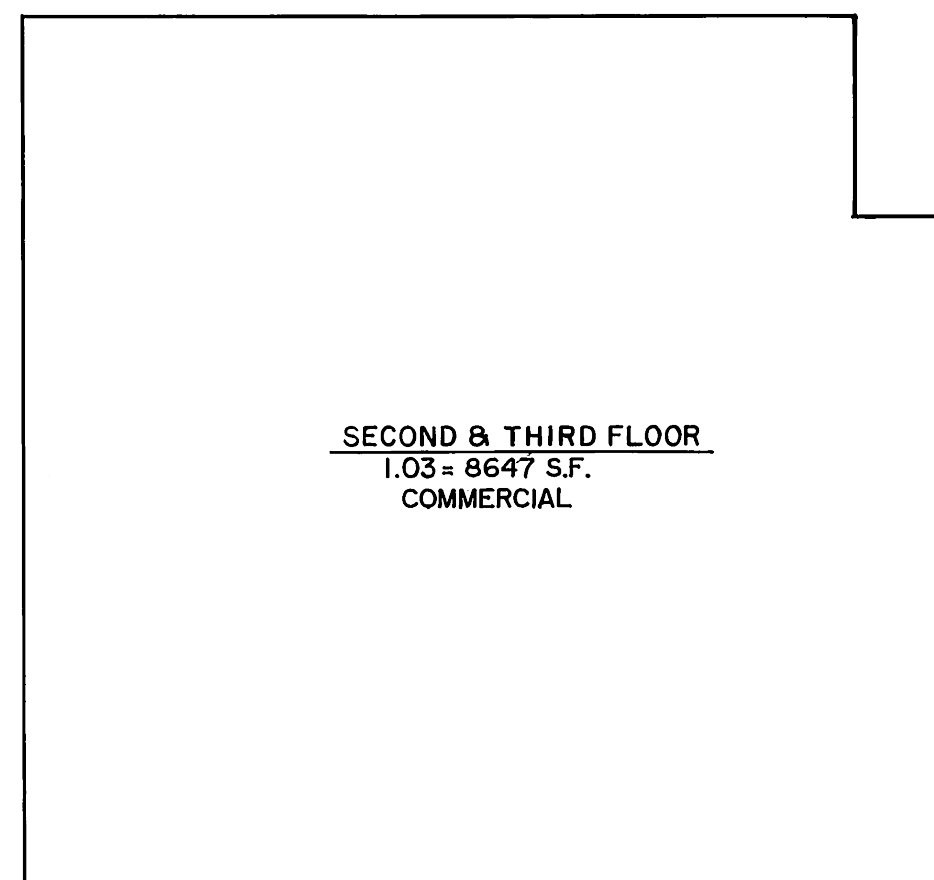


**BAYVIEW CONDOMINIUMS**  
SHEET 4 BLOCK 18  
NOT TO SCALE

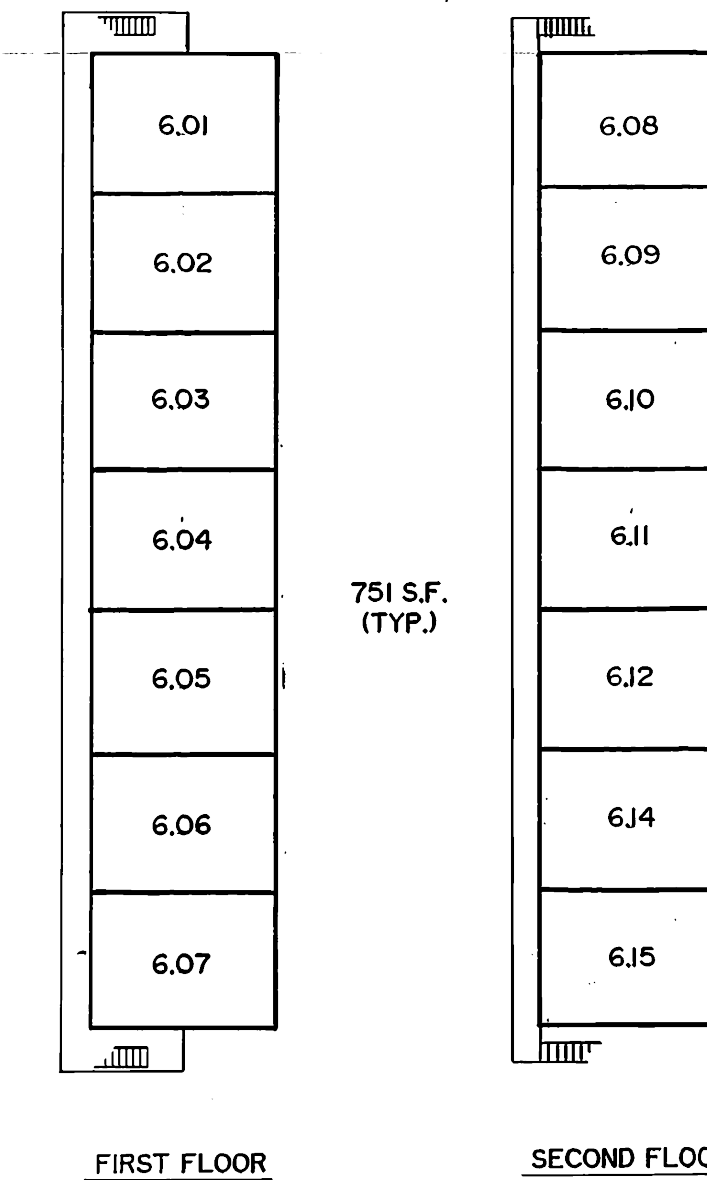
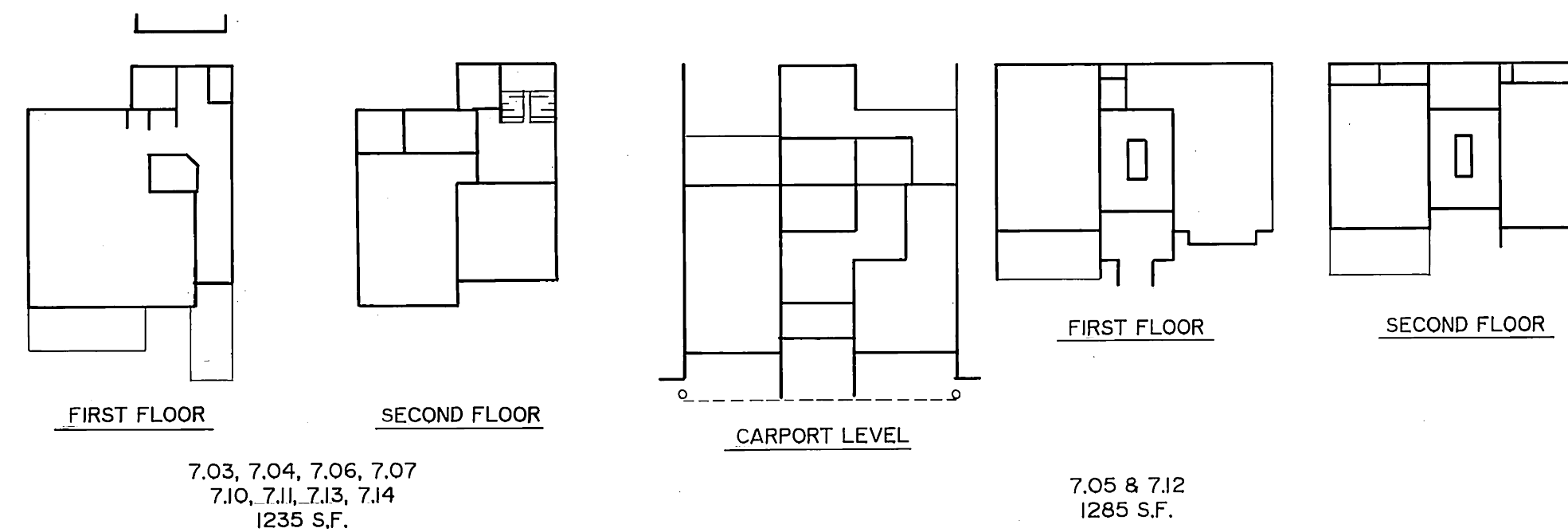
**SECOND FLOOR**  
4.03 = 2000 S.F.

**THE CAMEO CONDOMINIUM**  
SHEET 7 BLOCK 35  
NOT TO SCALE

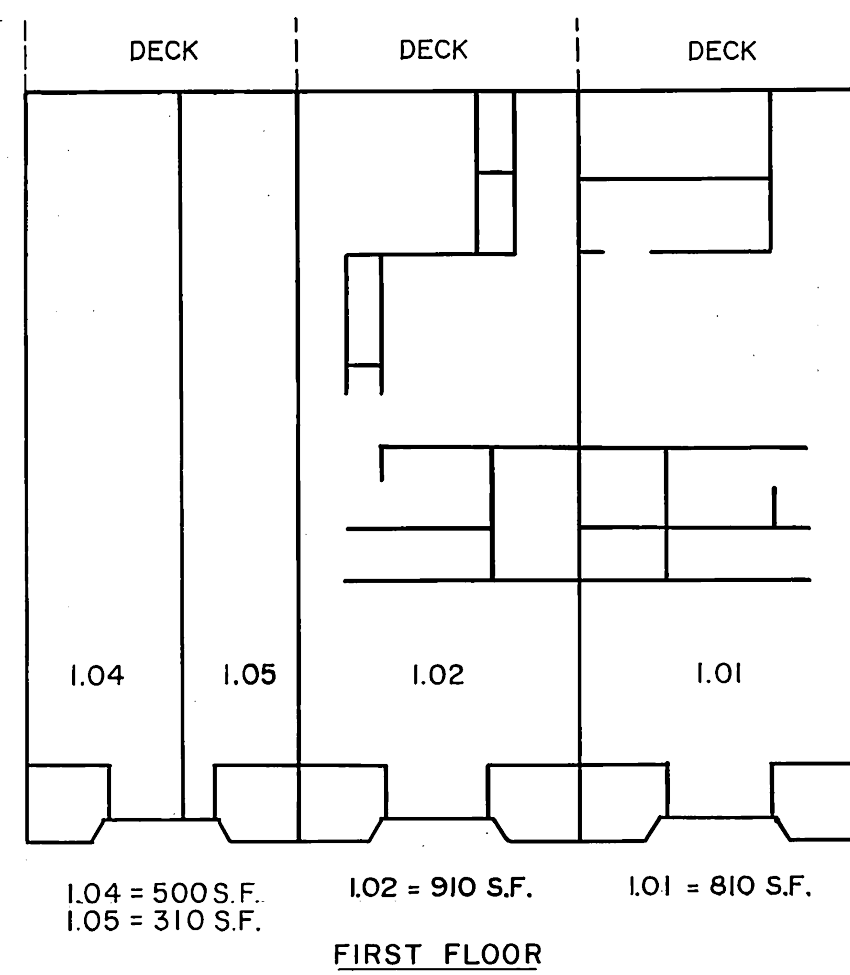
**SANDRIFT CONDOMINIUM**  
SHEET 4 BLOCK 16  
NOT TO SCALE



**SEASIDE OCEANSIDE VII CONDOMINIUMS**  
SHEET 4 BLOCK 18  
NOT TO SCALE

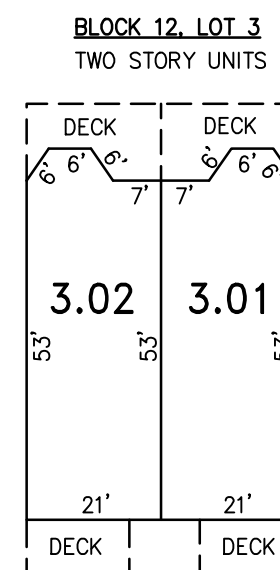
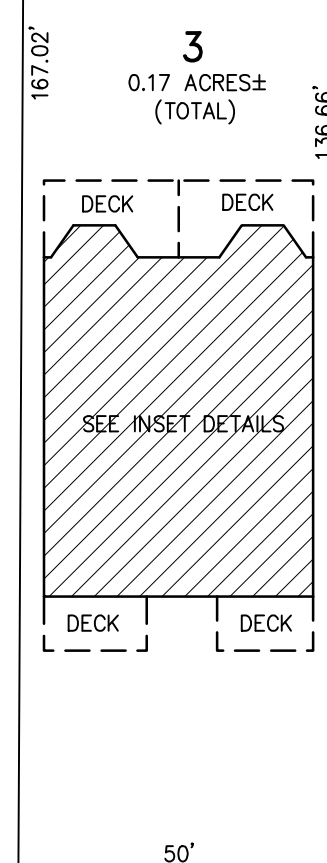


**SANDS POINTE CONDOMINIUM**  
SHEET 7 BLOCK 35  
NOT TO SCALE



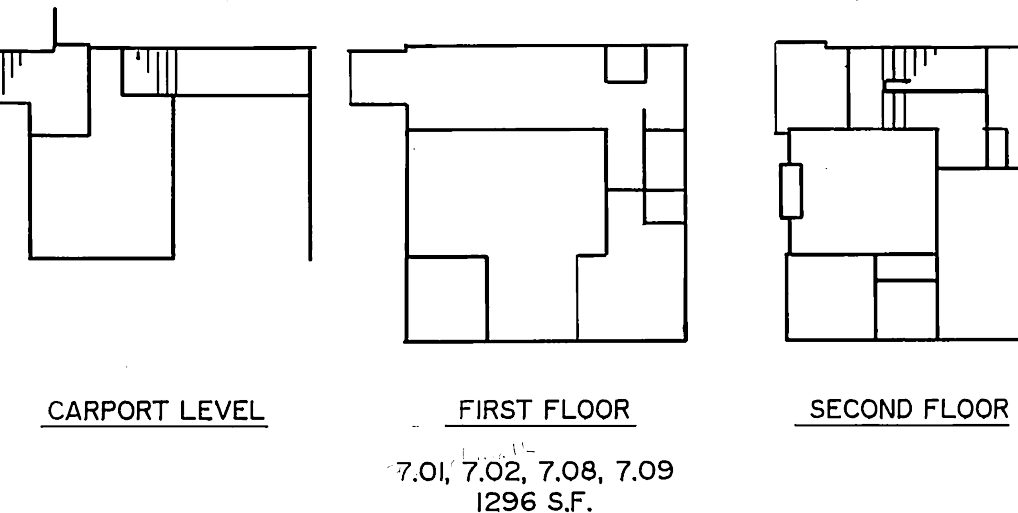
**TOTALS**  
1.01 = 810 S.F.  
1.02 = 910 S.F.  
1.03 = 8647 S.F.  
1.04 = 500 S.F.  
1.05 = 310 S.F.

**S. BAYVIEW AVENUE**  
(100' R.O.W.)  
57.48'



**DETAILS**  
SCALE: 1"=30'

BLOCK NUMBER	LOT NUMBER	CONDO QUALIFIER	SQUARE FOOTAGE
12	3.01	C.A1	2200 SF.
12	3.02	C.A2	2200 SF.



**BEACHWALK CONDOMINIUMS**  
SHEET 4 BLOCK 18  
NOT TO SCALE

THIS SHEET HAS BEEN REVISED USING COMPUTER AIDED DRAFTING/DESIGN. (CADD)

THIS SHEET IS A SCANNED COPY OF THE TAX MAP PREPARED BY REMINGTON & VERNICK ENGINEERS DATED DECEMBER 1986. THE ORIGINAL APPROVED MAP IS ON FILE AT CME ASSOCIATES, HOWELL, NEW JERSEY.

**PARK COMMON CONDOMINIUM**  
SHEET 7 BLOCK 32  
NOT TO SCALE

**BLOCK 12, LOT 3**  
**SOUTH BAYVIEW CONDOMINIUM**

REVISION		
DATE	L.S. NAME	LIC. #
APRIL 1992	THOMAS CRADER	21782
JAN. 1993	THOMAS CRADER	21782
JULY 2009	MICHAEL MCGURL	38338
JAN. 2016	CHARLES E. ADAMSON	42627
APRIL 2019	CHARLES E. ADAMSON	42627

**TAX MAP**  
**BOROUGH OF SEASIDE PARK**  
OCEAN COUNTY NEW JERSEY  
SCALE: AS NOTED DECEMBER 1986  
**CRAIG F. REMINGTON, L.S.**  
**REMINGTON & VERNICK ENGINEERS**  
9 ALLEN STREET, TOMS RIVER, NEW JERSEY