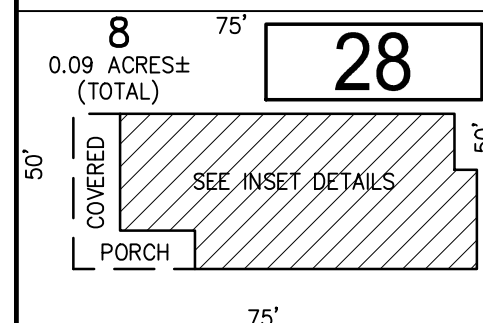


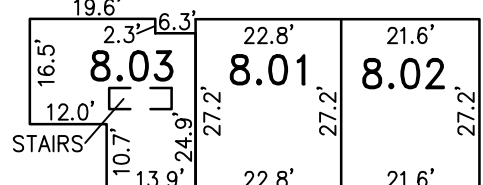
REVISION		
DATE	L.S. NAME	LIC. #
FEB. 1992	THOMAS CRADER	21782
APRIL 1992	THOMAS CRADER	21782
JAN. 1993	THOMAS CRADER	21782
SEPT. 2000	THOMAS CRADER	21782
JULY 2009	MICHAEL MCGURL	38338
JAN. 2016	CHARLES E. ADAMSON	42627
NOV. 2018	CHARLES E. ADAMSON	42627
APRIL 2019	CHARLES E. ADAMSON	42627
SEPT. 2020	CHARLES E. ADAMSON	42627



W. CENTRAL AVENUE  
(50' R.O.W.)

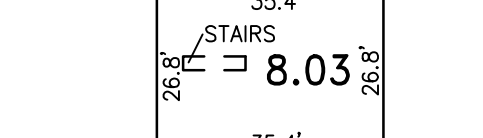
PLAN  
SCALE: 1"=30'

BLOCK 28, LOT 8  
FIRST FLOOR



BLOCK NUMBER	LOT NUMBER	CONDO QUALIFIER	SQUARE FOOTAGE
28	8.01	C.A1	683 SF.
28	8.02	C.A2	530 SF.
28	8.03	C.A3	1437 SF.

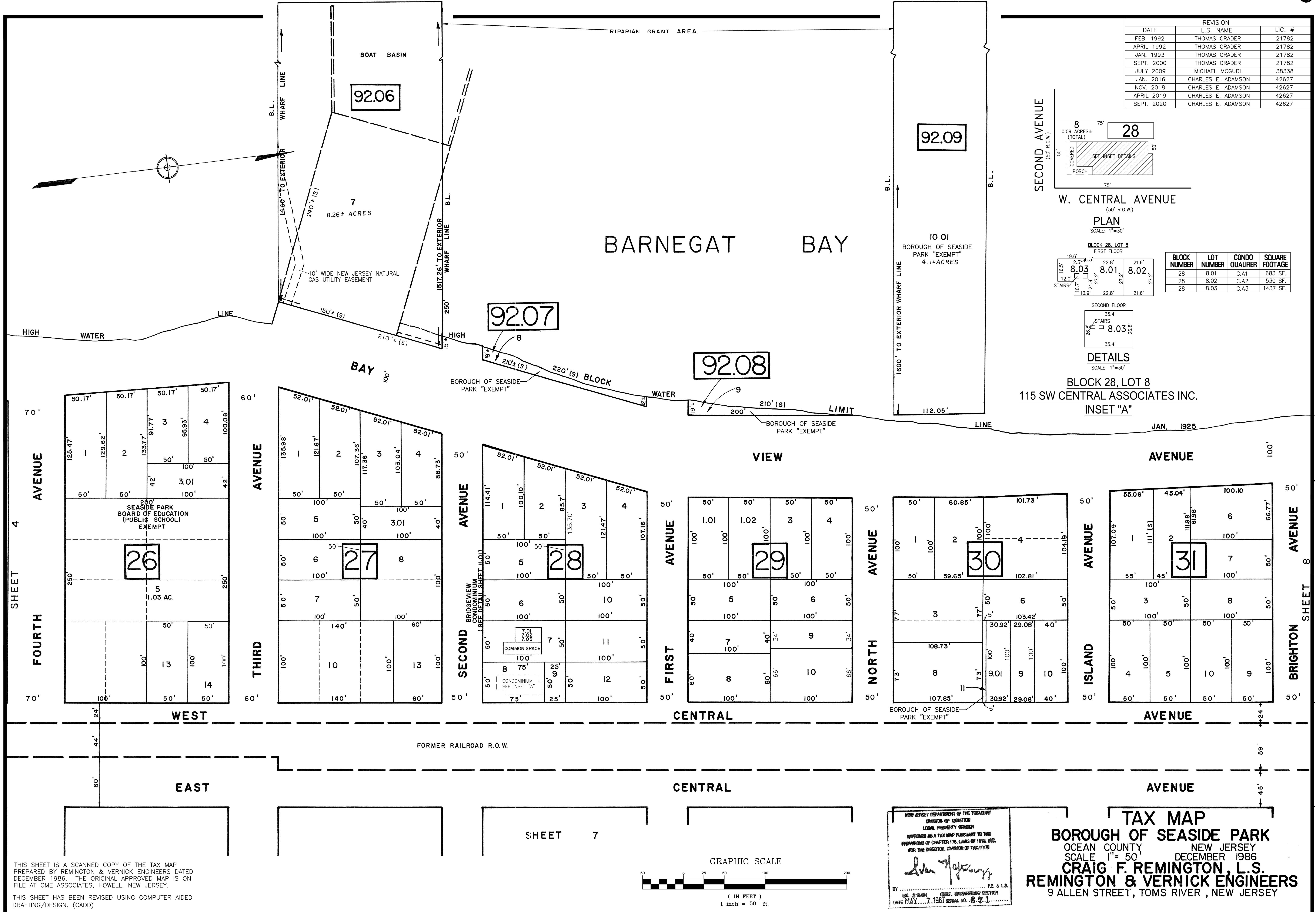
SECOND FLOOR



DETAILS  
SCALE: 1"=30'

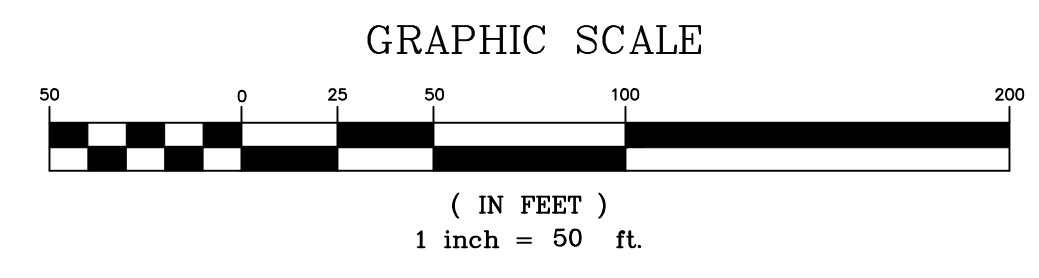
BLOCK 28, LOT 8  
115 SW CENTRAL ASSOCIATES INC.  
INSET "A"

JAN. 1925



THIS SHEET IS A SCANNED COPY OF THE TAX MAP PREPARED BY REMINGTON & VERNICK ENGINEERS DATED DECEMBER 1986. THE ORIGINAL APPROVED MAP IS ON FILE AT CME ASSOCIATES, HOWELL, NEW JERSEY. THIS SHEET HAS BEEN REVISED USING COMPUTER AIDED DRAFTING/DESIGN. (CADD)

SHEET 7



NEW JERSEY DEPARTMENT OF THE TREASURY  
DIVISION OF TAXATION  
LOCAL PROPERTY TAXATION  
APPROVED AS A TAX MAP PURSUANT TO THE PROVISIONS OF CHAPTER 175, LAWS OF 1918, REV. FOR THE DIRECTOR, DIVISION OF TAXATION  
*Van Houten*  
BY ..... P.E. & L.S.  
L.S. # 81848 CRP ENGINEERING SECTION  
DATE MAY 7, 1987 SERIAL NO. 671

TAX MAP  
BOROUGH OF SEASIDE PARK  
OCEAN COUNTY NEW JERSEY  
SCALE 1"=50' DECEMBER 1986  
CRAIG F. REMINGTON, L.S.  
REMINGTON & VERNICK ENGINEERS  
9 ALLEN STREET, TOMS RIVER, NEW JERSEY