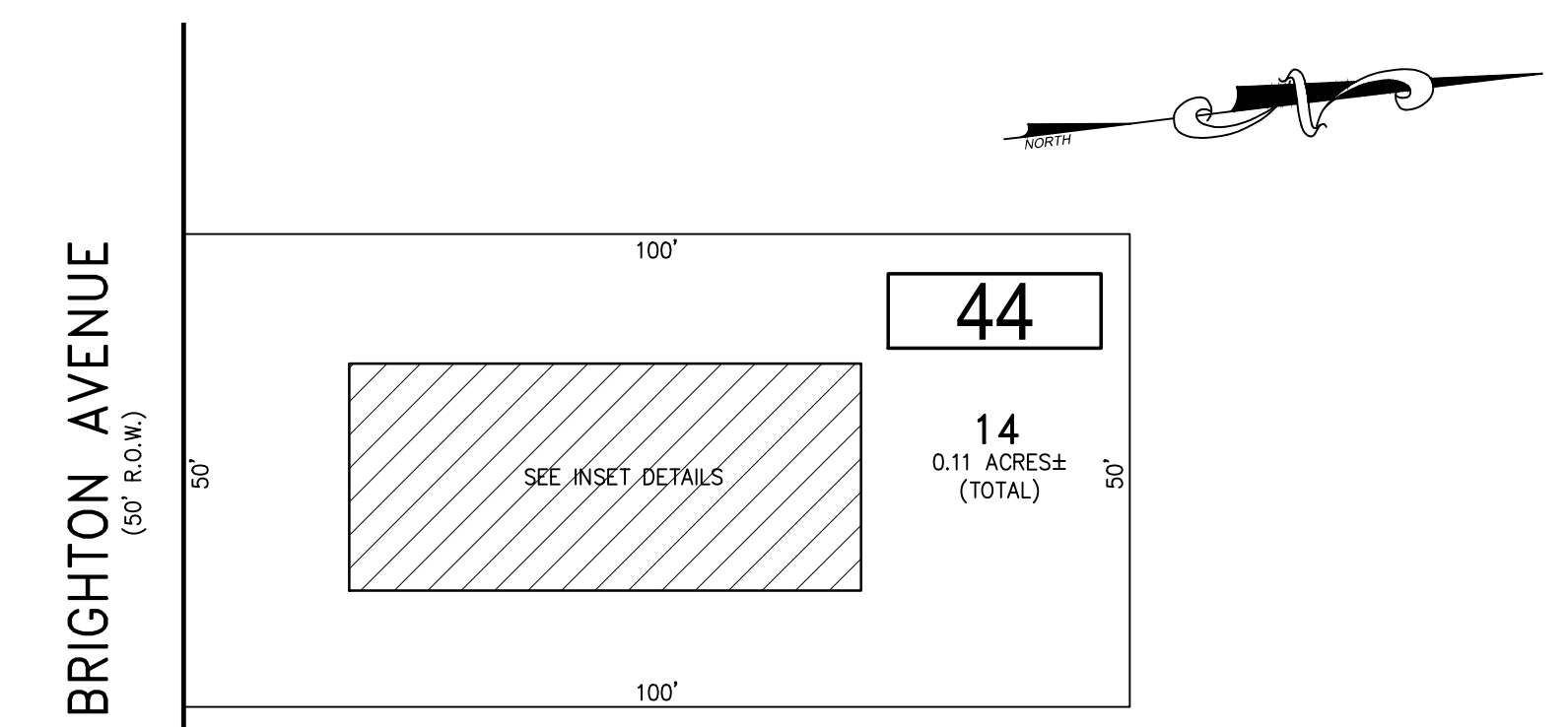


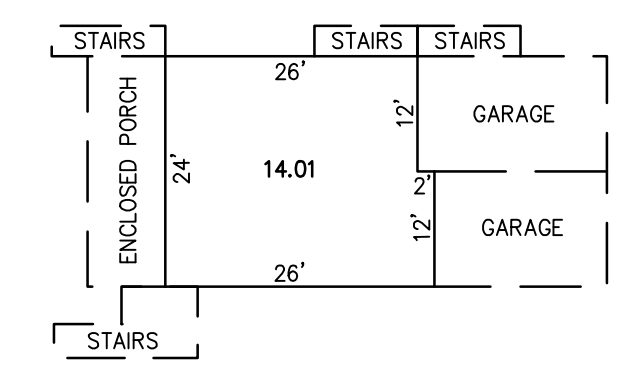
REVISIONS		
DATE	NAME	NO.
JAN. 2016	CHARLES E. ADAMSON	42627

**NOTE:**  
 THIS SHEET HAS BEEN DRAWN USING COMPUTER AIDED DRAFTING/DESIGN  
 (CAD/D) AND COORDINATE GEOMETRY (COGO).



**PLAN**  
 SCALE: 1"=20'

**BLOCK 44, LOT 14**  
 FIRST FLOOR

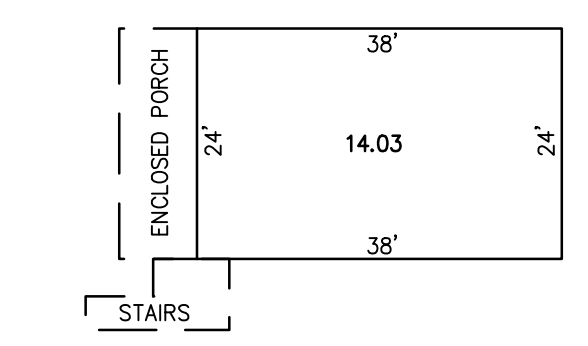


BLOCK NUMBER	LOT NUMBER	CONDO QUALIFIER	SQUARE FOOTAGE
44	14.01	C.A1	864 SF.
44	14.02	C.B2	1080 SF.
44	14.03	C.C3	1080 SF.

SECOND FLOOR



THIRD FLOOR



**DETAILS**  
 SCALE: 1"=20'

**BLOCK 44, LOT 14**  
**14 BRIGHTON AVENUE CONDOMINIUM**  
**14 BRIGHTON AVENUE**

BLOCK 44, LOT 14  
 SEE SHEET 9

**TAX MAP**  
**BOROUGH OF SEASIDE PARK**  
 OCEAN COUNTY NEW JERSEY

SCALE: NOTED      DATE: 1-10-2016

**CHARLES E. ADAMSON** NJ PROFESSIONAL LAND SURVEYOR LIC. NO. 42627

**REMGTON, VERNICK & VENA ENGINEERS**  
 9 ALLEN STREET, TOMS RIVER, N.J. 08753  
 (732) 286-9220, FAX (732) 505-8446  
 WEB SITE ADDRESS: WWW.RVE.COM