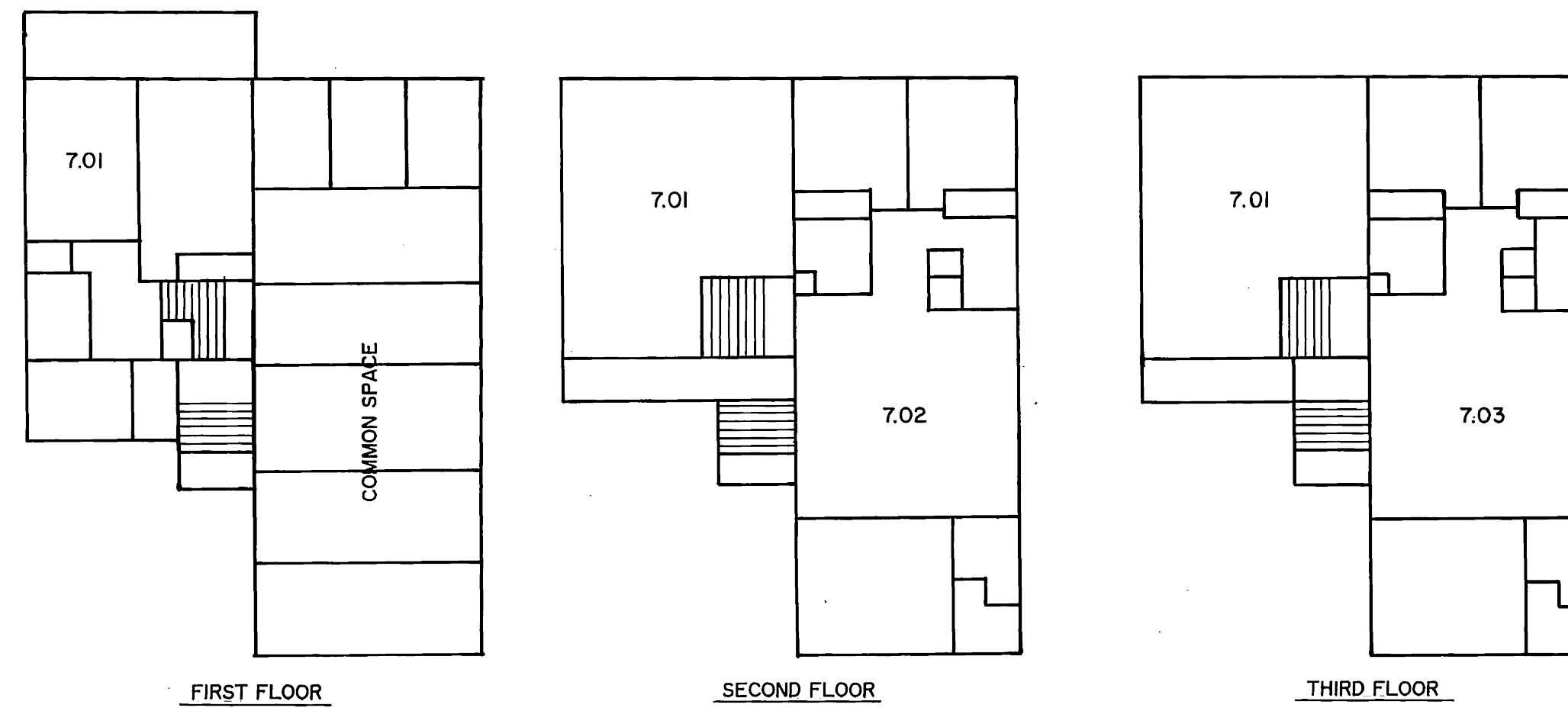
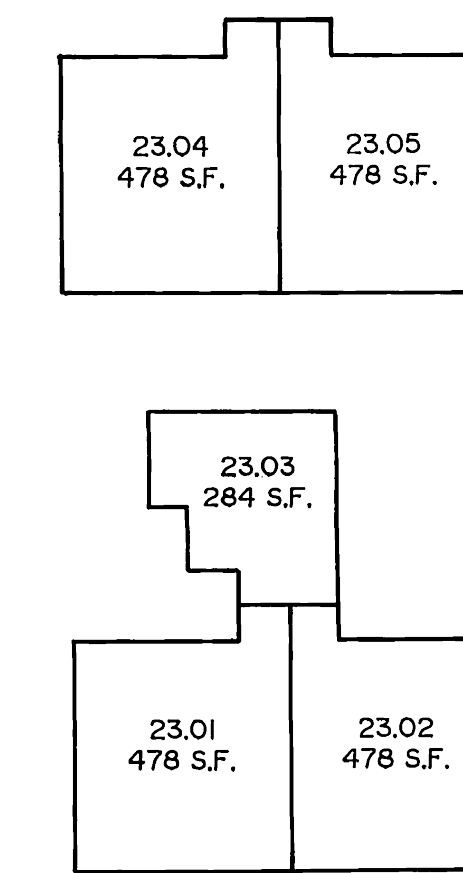


**JOEY'S SOUTH EAST PLAZA, INC. CONDOMINIUM**  
SHEET 7 BLOCK 32  
NOT TO SCALE

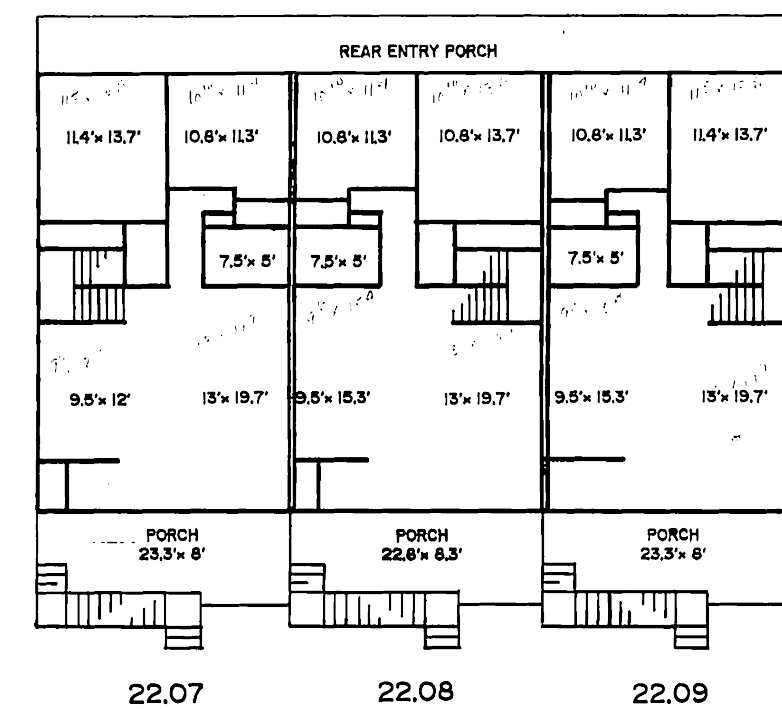


7.01 - UNIT 1 - 3 FLOORS = 1575 S.F.  
7.02 - UNIT 2 - 2nd FLOOR = 1092 S.F.  
7.03 - UNIT 3 - 3rd FLOOR = 1092 S.F.

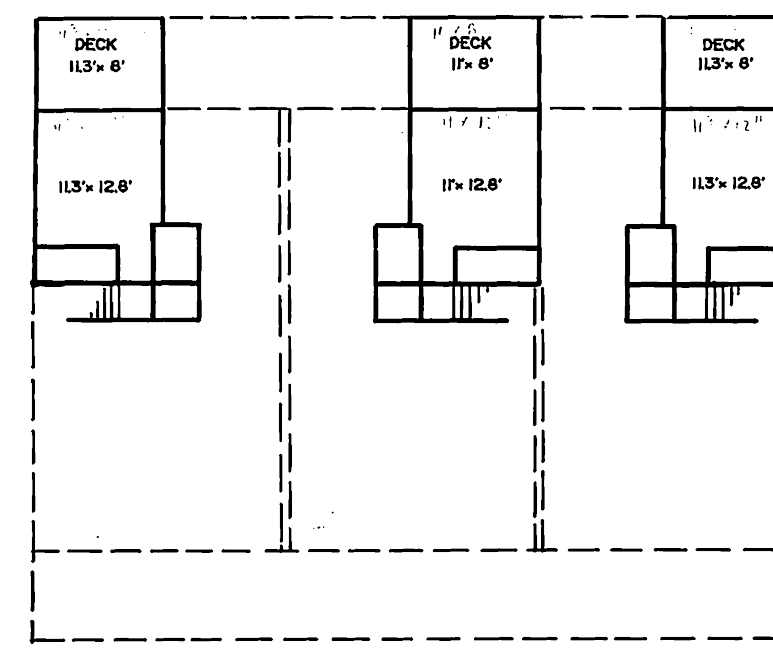
**BRIDGEVIEW CONDOMINIUM ASSOCIATION, INC.**  
SHEET 6 BLOCK 28  
NOT TO SCALE



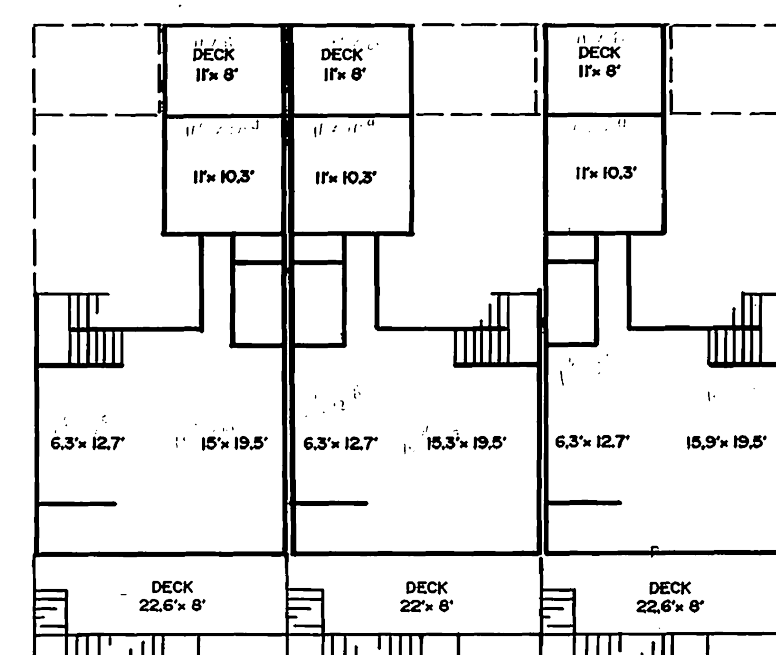
**TWIN ARBORS CONDOMINIUM**  
SHEET 10 BLOCK 54  
NOT TO SCALE



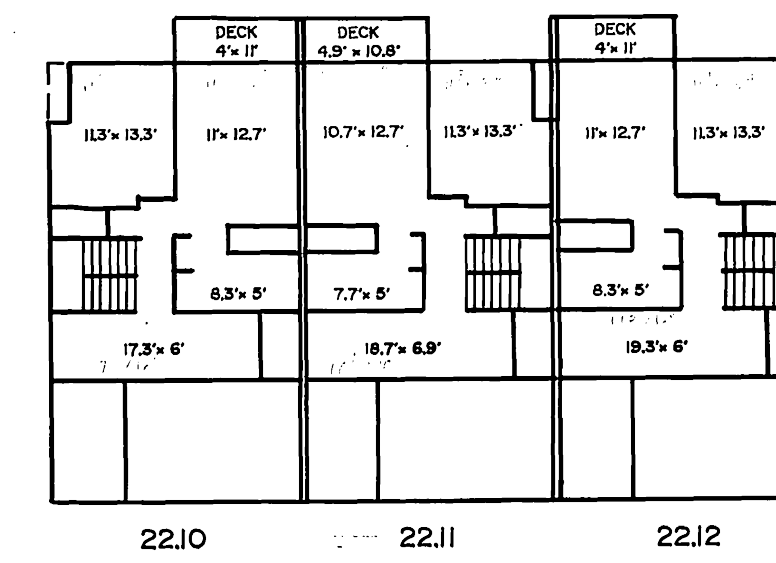
FIRST FLOOR - BUILDING I



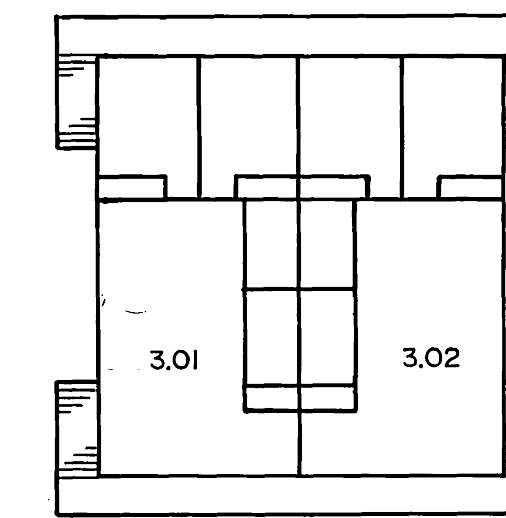
SECOND FLOOR - BUILDING I



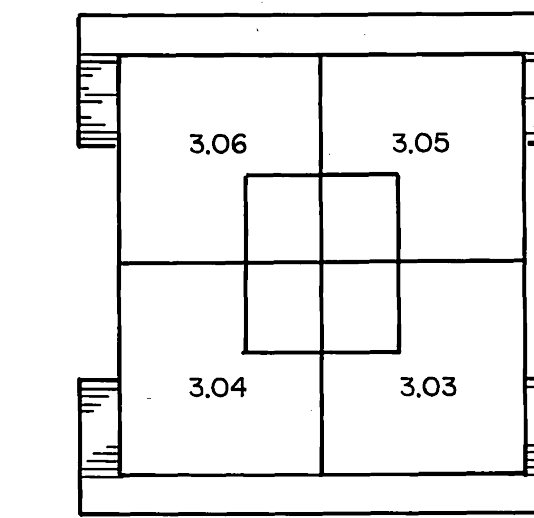
SECOND FLOOR - BUILDING I



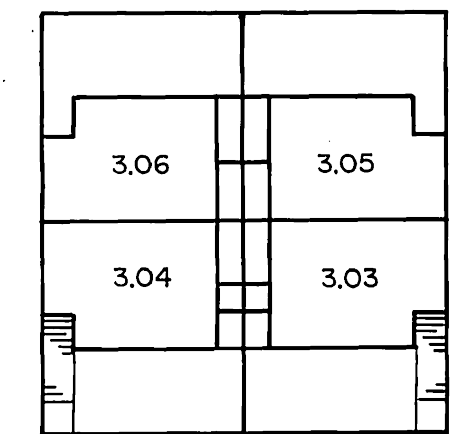
LOFT - BUILDING I



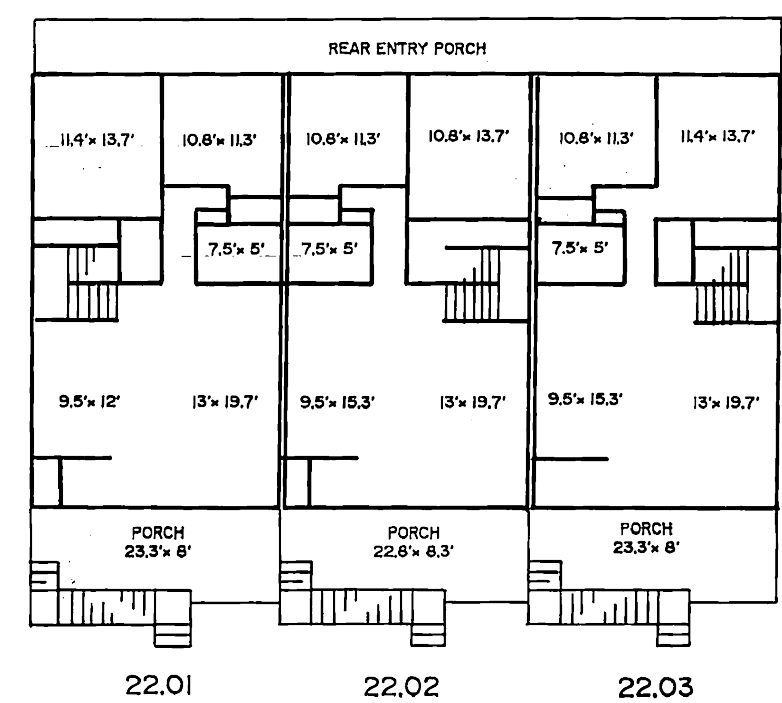
FIRST FLOOR  
UNIT 3.01 928 S.F.  
UNIT 3.02 928 S.F.



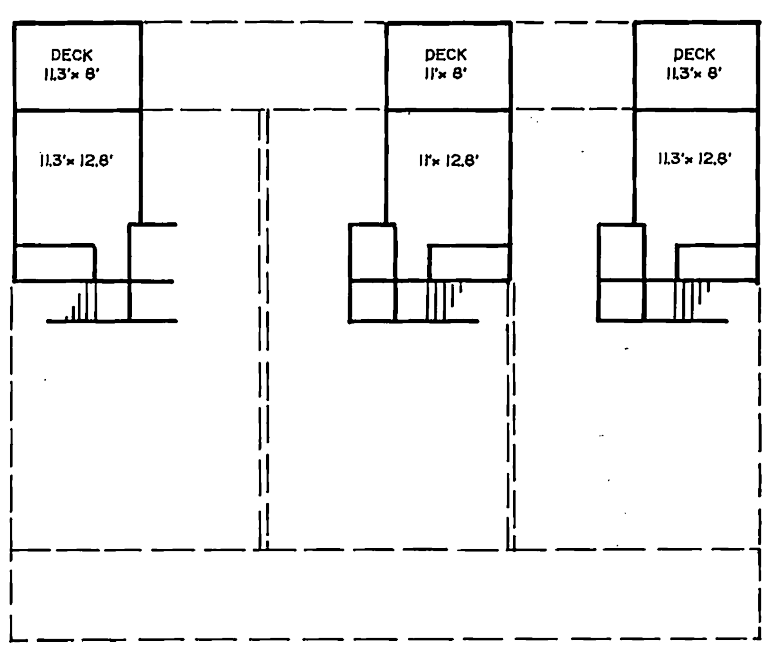
SECOND FLOOR  
UNIT 3.04 742 S.F.  
UNIT 3.05 742 S.F.



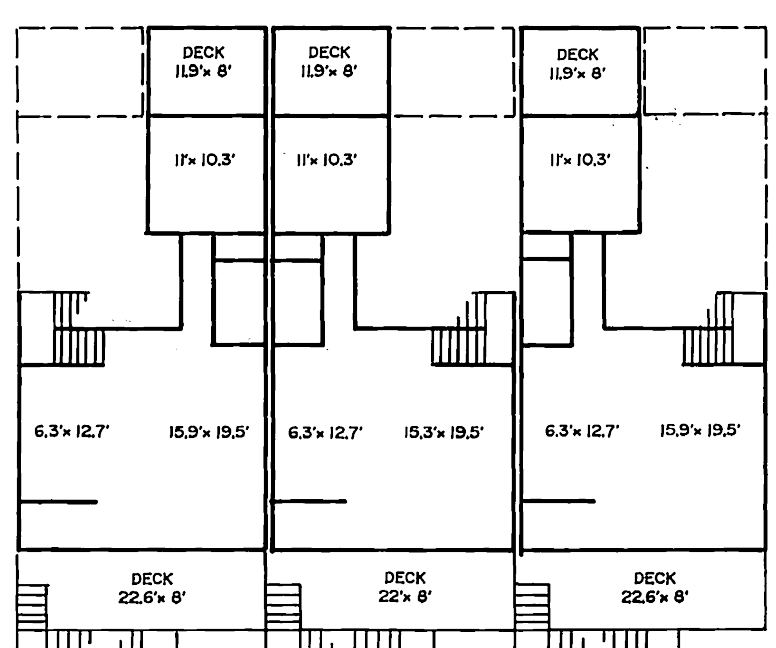
LOFT



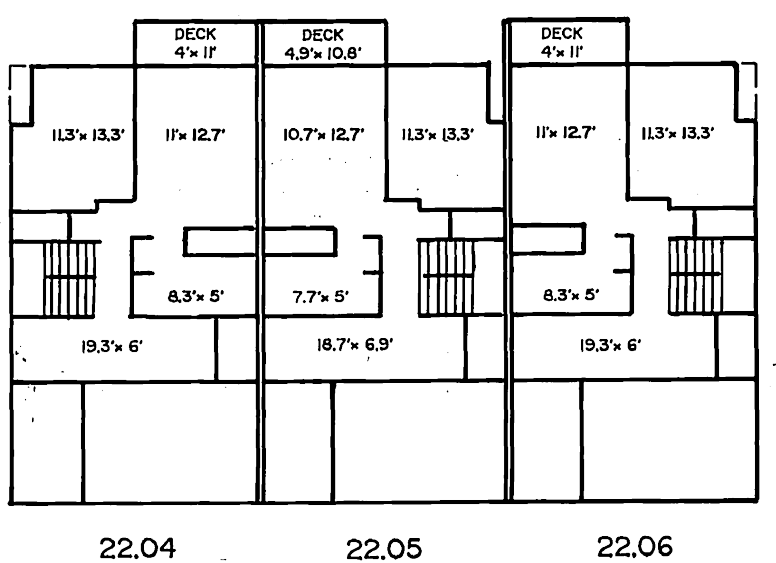
FIRST FLOOR - BUILDING II



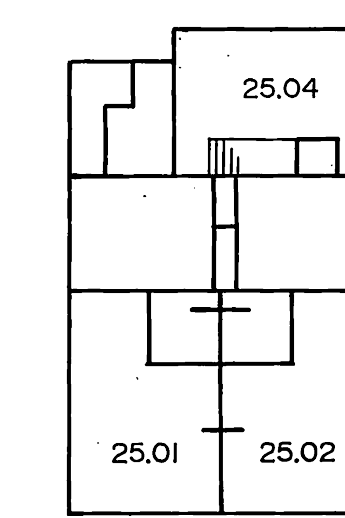
SECOND FLOOR - BUILDING II



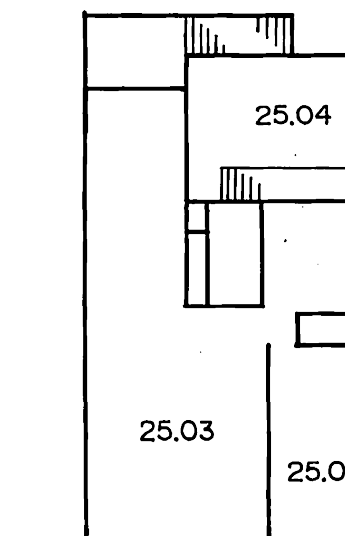
SECOND FLOOR - BUILDING II



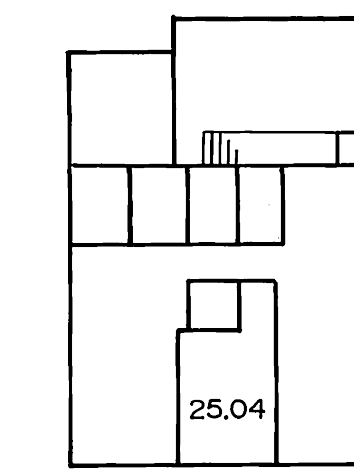
LOFT - BUILDING II



FIRST FLOOR  
UNIT 25.01 482 S.F.  
UNIT 25.02 457 S.F.



SECOND FLOOR  
UNIT 25.03 1048 S.F.  
UNIT 25.04 1453 S.F.



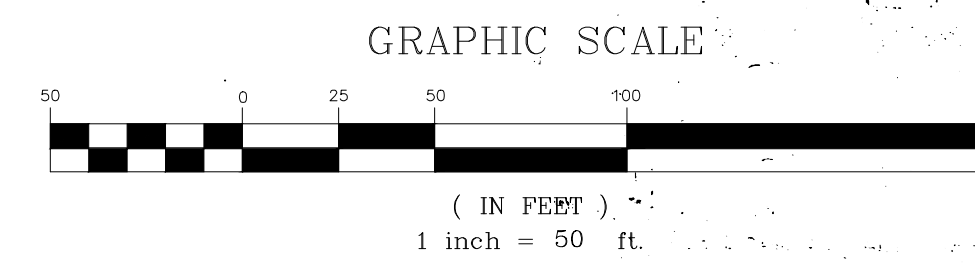
THIRD FLOOR

**OCEAN HOUSE CONDOMINIUM**  
SHEET 11 BLOCK 61

**THE MOORINGS CONDOMINIUMS**  
SHEET 10 BLOCK 52

THIS SHEET HAS BEEN REVISED USING COMPUTER AIDED DRAFTING/DESIGN. (CADD)

THIS SHEET IS A SCANNED COPY OF THE TAX MAP PREPARED BY REMINGTON & VERNICK ENGINEERS DATED DECEMBER 1986. THE ORIGINAL APPROVED MAP IS ON FILE AT CME ASSOCIATES, HOWELL, NEW JERSEY.



DATE	REVISION	L.S. NAME	LIC. #
JAN. 1993		THOMAS CRADER	21782
JULY 2009		MICHAEL MCGURL	38338
JAN. 2016		CHARLES E. ADAMSON	42627

**TAX MAP**  
**BOROUGH OF SEASIDE PARK**  
OCEAN COUNTY NEW JERSEY  
SCALE NOTED DECEMBER 1986  
**CRAIG F. REMINGTON, L.S.**  
**REMINGTON & VERNICK ENGINEERS**  
9 ALLEN STREET, TOMS RIVER, NEW JERSEY