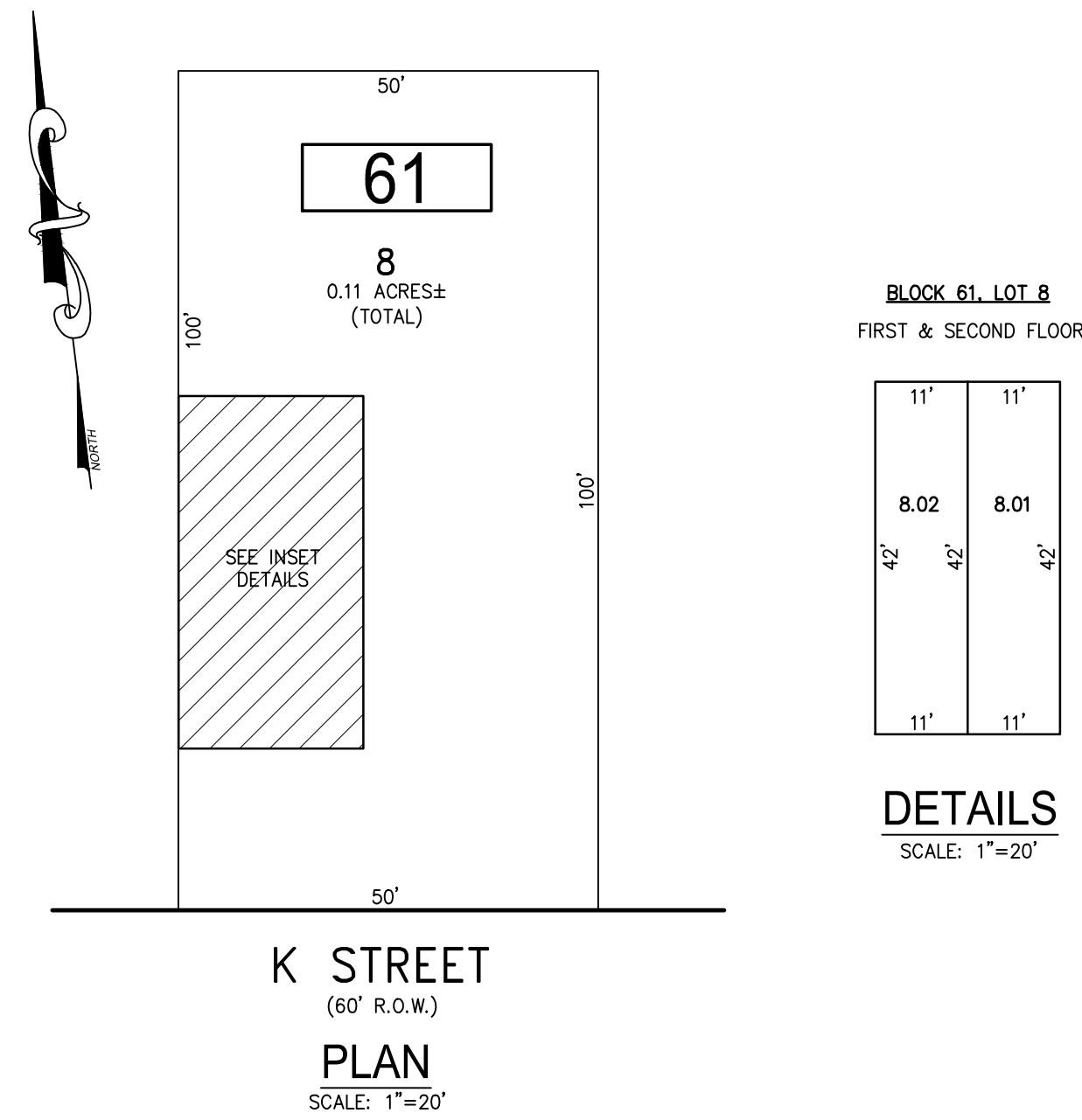
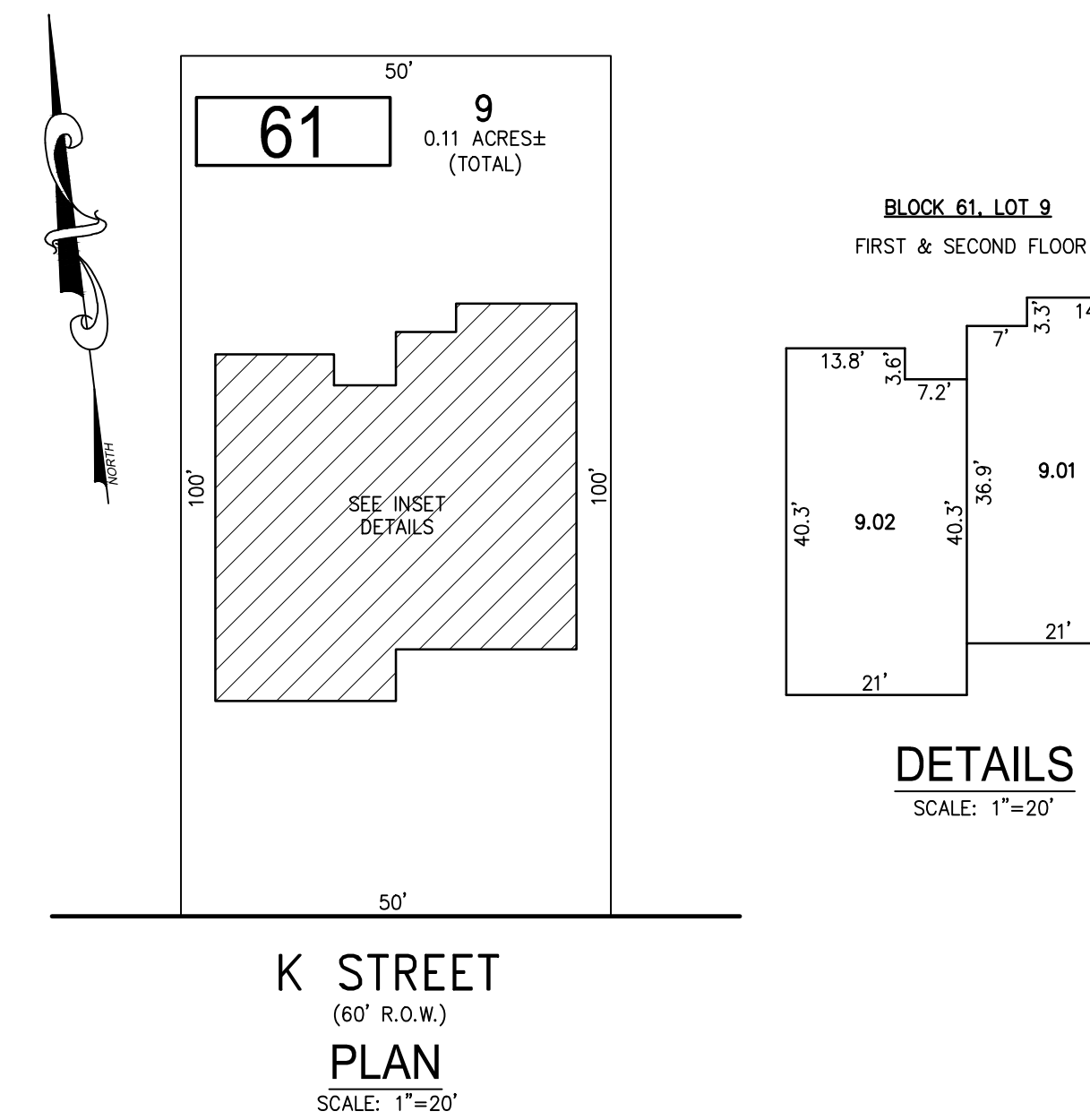


REVISIONS		
DATE	NAME	NO.
JAN. 2016	CHARLES E. ADAMSON	42627
DEC. 2021	CHARLES E. ADAMSON	42627

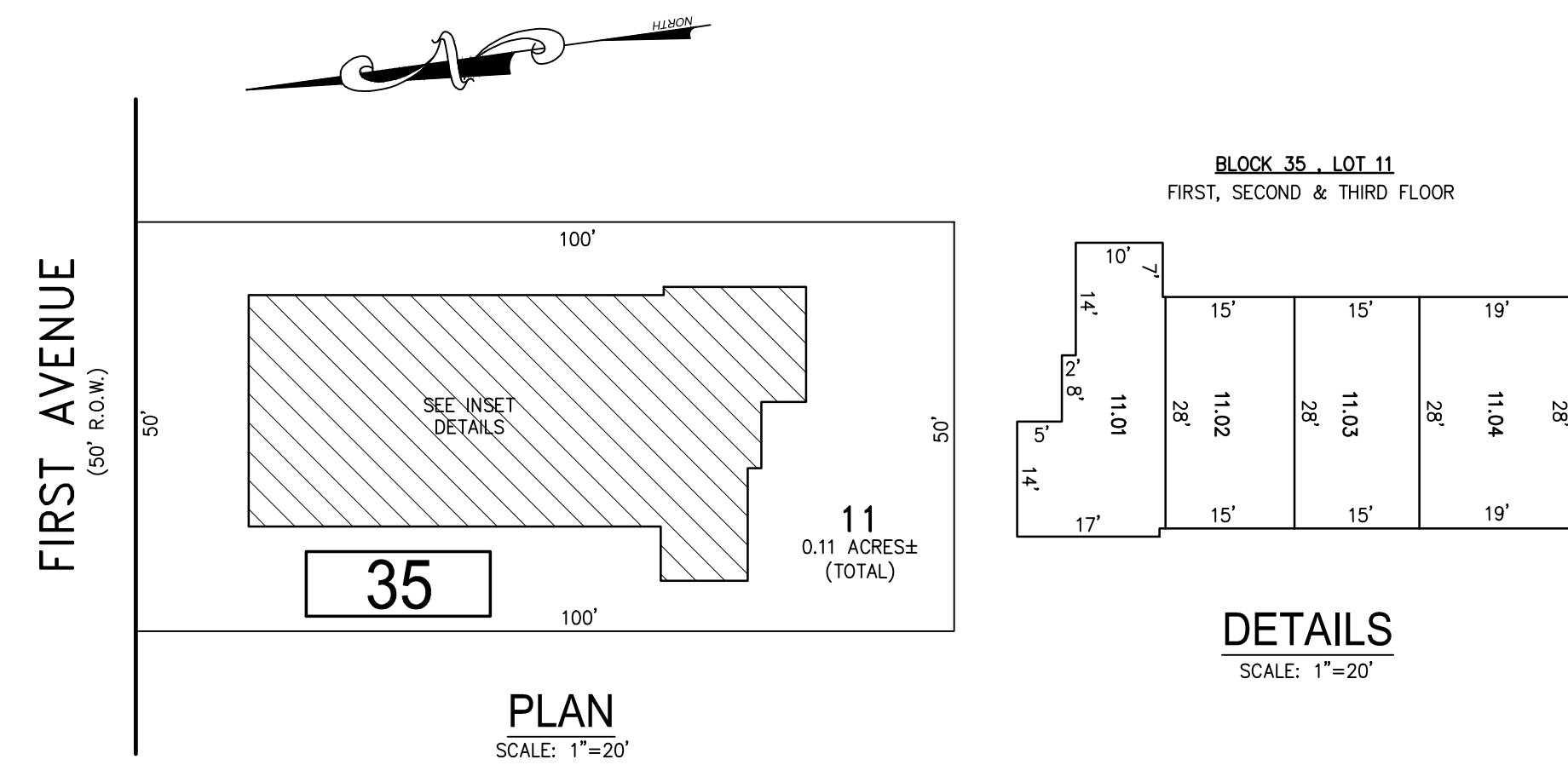
NOTE:
THIS SHEET HAS BEEN DRAWN USING COMPUTER AIDED DRAFTING/DESIGN (CAD/D) AND COORDINATE GEOMETRY (COGO).



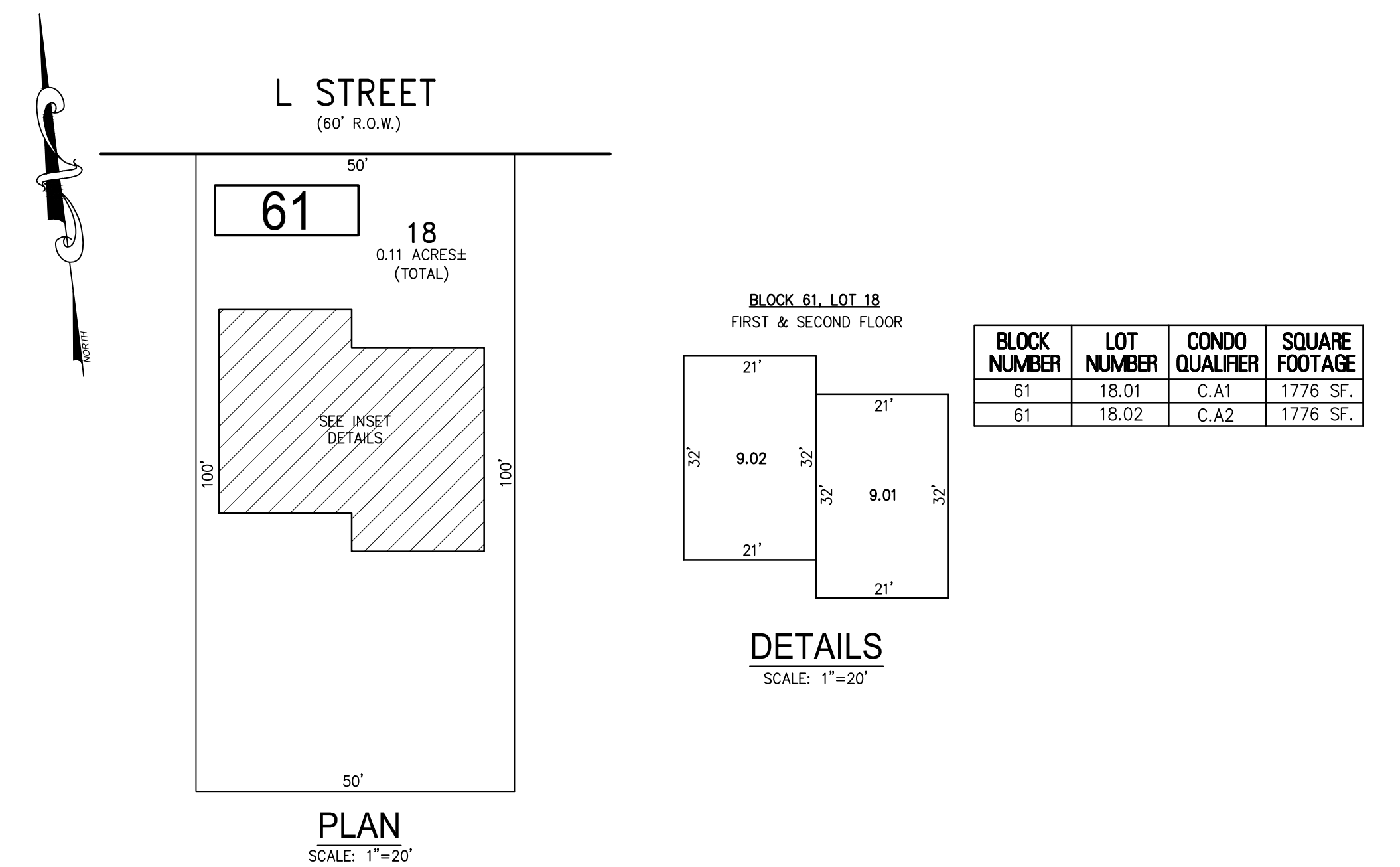
BLOCK 61, LOT 8
REILLY CREST CONDOMINIUM
22 K STREET



BLOCK 61, LOT 9
BLUEFIN CONDOMINIUM
16-18 K STREET



BLOCK 35, LOT 11
SANDPIPER CONDOMINIUM
26 FIRST AVENUE



BLOCK 61, LOT 18
L STREET CONDOMINIUM
17-19 L STREET

BLOCK 61, LOT 8
BLOCK 61, LOT 9
BLOCK 61, LOT 18
SEE SHEET 7
SEE SHEET 11

TAX MAP
BOROUGH OF SEASIDE PARK
OCEAN COUNTY NEW JERSEY
SCALE: NOTED DATE: 1-10-2016
CHARLES E. ADAMSON NJ PROFESSIONAL LAND SURVEYOR LIC. NO. 42627
REMINGTON, VERNICK & VENA ENGINEERS
24 GA 28003300
9 ALLEN STREET, TOMS RIVER, NJ, 08753
(732) 286-9220, FAX (732) 505-9416
WEB SITE ADDRESS: WWW.RVVE.COM