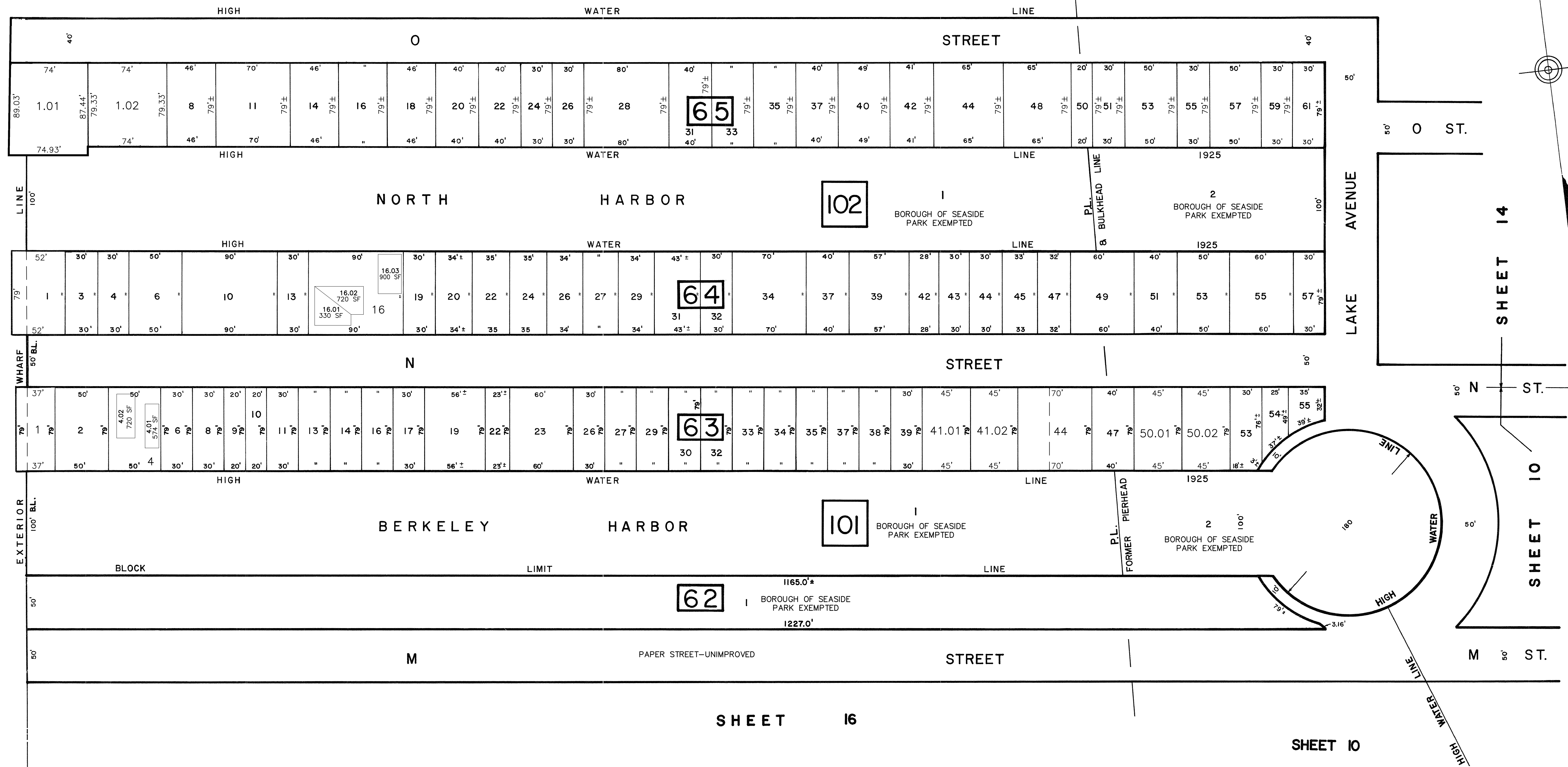


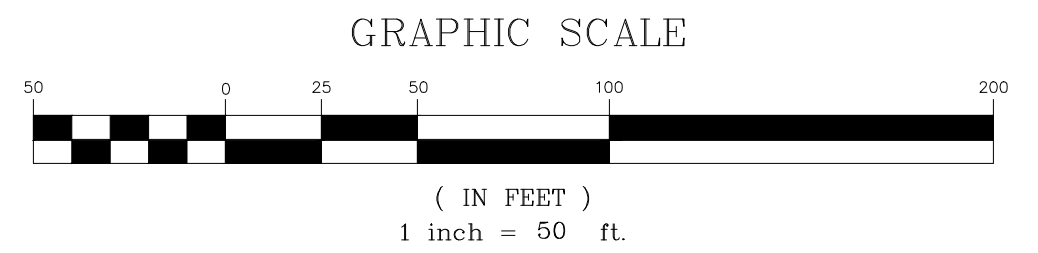
REVISION		
DATE	L.S. NAME	LIC. #
JAN. 1993	THOMAS CRADER	21782
JULY 2009	MICHAEL MCGURL	38338
JAN. 2016	CHARLES E. ADAMSON	42627
NOV. 2017	CHARLES E. ADAMSON	42627
MAR. 2021	CHARLES E. ADAMSON	42627

BARNEGAT BAY



THIS SHEET HAS BEEN REVISED USING COMPUTER AIDED DRAFTING/DESIGN. (CADD)

THIS SHEET IS A SCANNED COPY OF THE TAX MAP PREPARED BY REMINGTON & VERNICK ENGINEERS DATED DECEMBER 1986. THE ORIGINAL APPROVED MAP IS ON FILE AT CME ASSOCIATES, HOWELL, NEW JERSEY.



NEW JERSEY DEPARTMENT OF THE TREASURY
DIVISION OF TAXATION
LOCAL PROPERTY TAX MAP
APPROVED AS A TAX MAP PURSUANT TO THE PROVISIONS OF CHAPTER 175, LAWS OF 1974, ETC. FOR THE DIRECTOR, DIVISION OF TAXATION

John H. Johnson
BY _____ P.E. & L.S.
LIC. #15424 CHIEF ENGINEERING SECTION
DATE MAY 7, 1987 SERIAL NO. 97

TAX MAP
BOROUGH OF SEASIDE PARK
OCEAN COUNTY NEW JERSEY
SCALE DECEMBER 1986
CRAIG F. REMINGTON, L.S.
REMINGTON & VERNICK ENGINEERS
9 ALLEN STREET, TOMS RIVER, NEW JERSEY