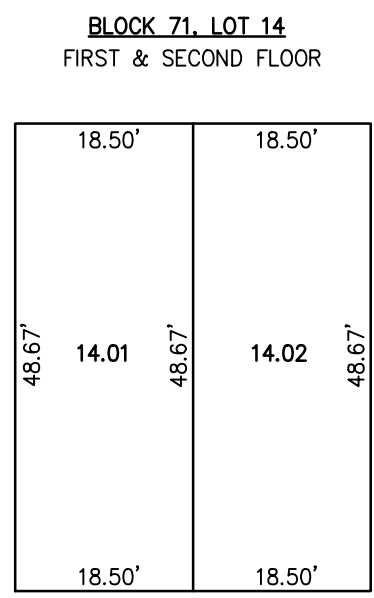
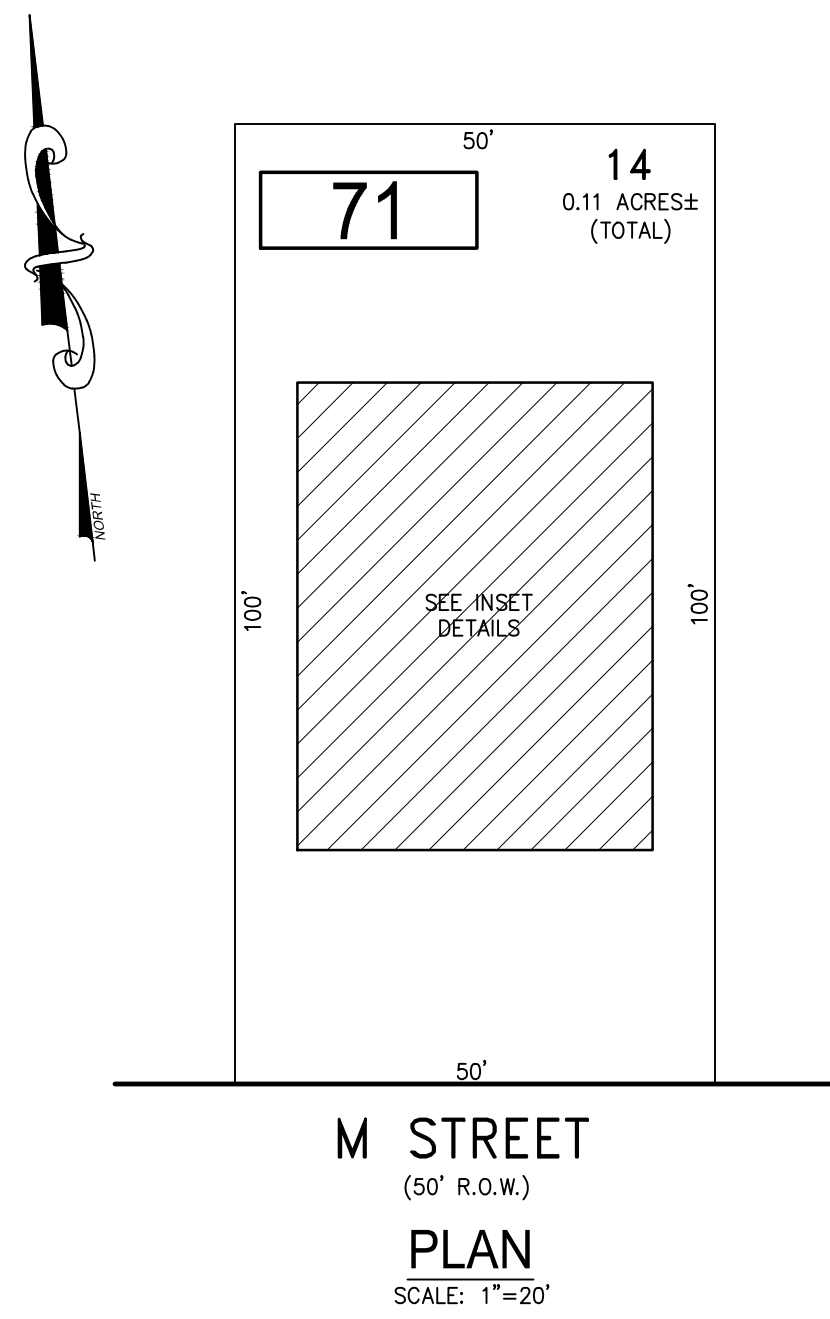


REVISIONS		
DATE	NAME	NO.
JAN. 2016	CHARLES E. ADAMSON	42627

**NOTE:**  
THIS SHEET HAS BEEN DRAWN USING COMPUTER AIDED DRAFTING/DESIGN (CAD/D) AND COORDINATE GEOMETRY (COGO).

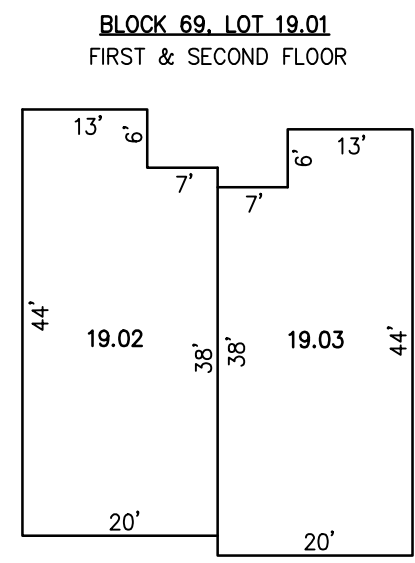
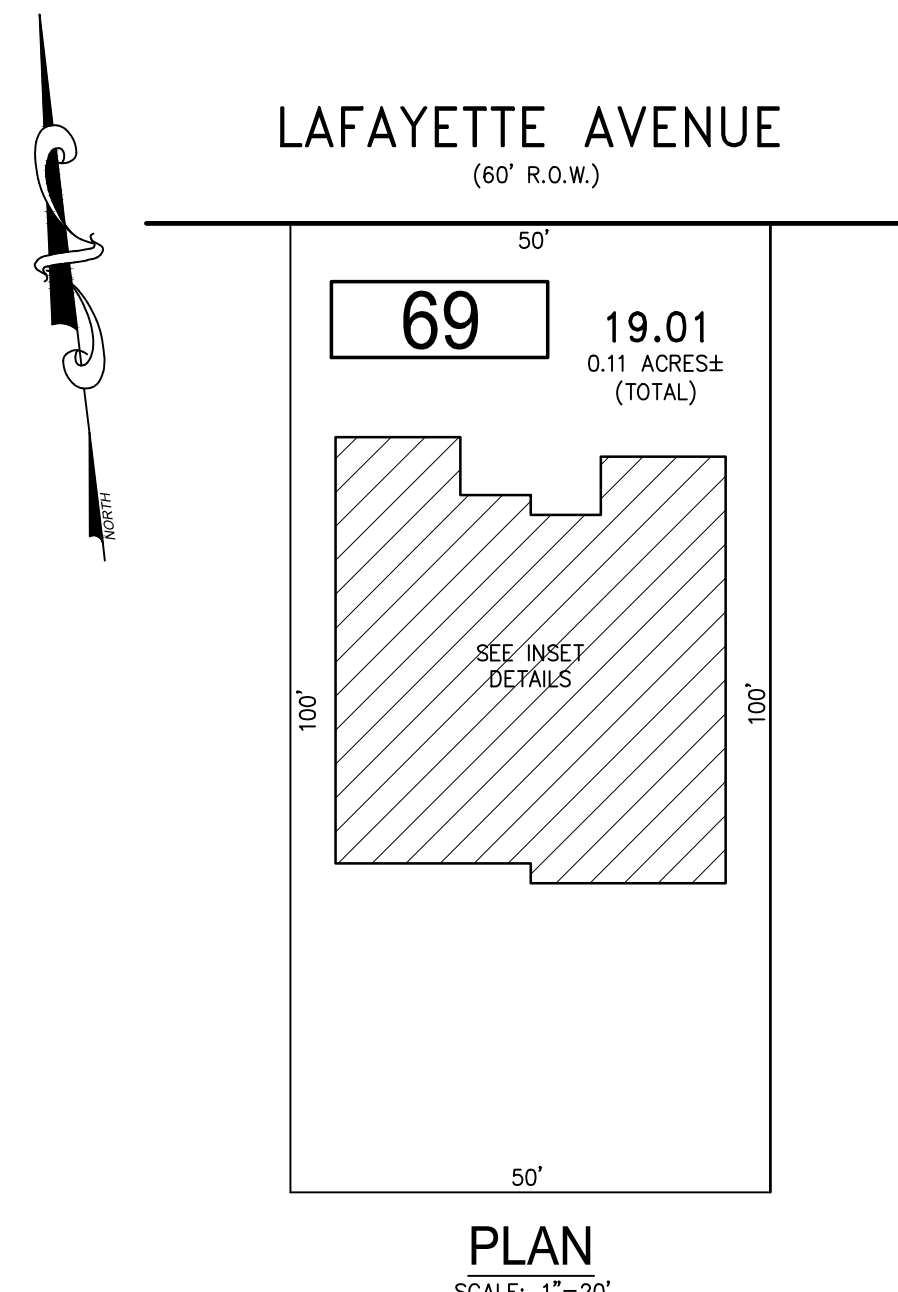


BLOCK NUMBER	LOT NUMBER	CONDO QUALIFIER	SQUARE FOOTAGE
71	14.01	C.A1	2214 SF.
71	14.02	C.A2	2214 SF.

**DETAILS**  
SCALE: 1"=20'

**PLAN**  
SCALE: 1"=20'

**BLOCK 71, LOT 14**  
**14 - 16 M STREET CONDOMINIUM**

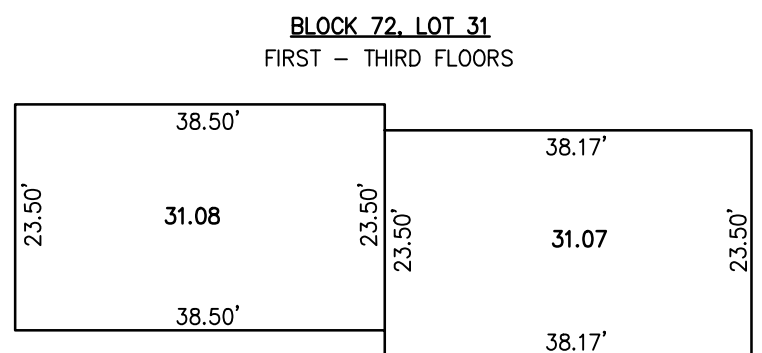
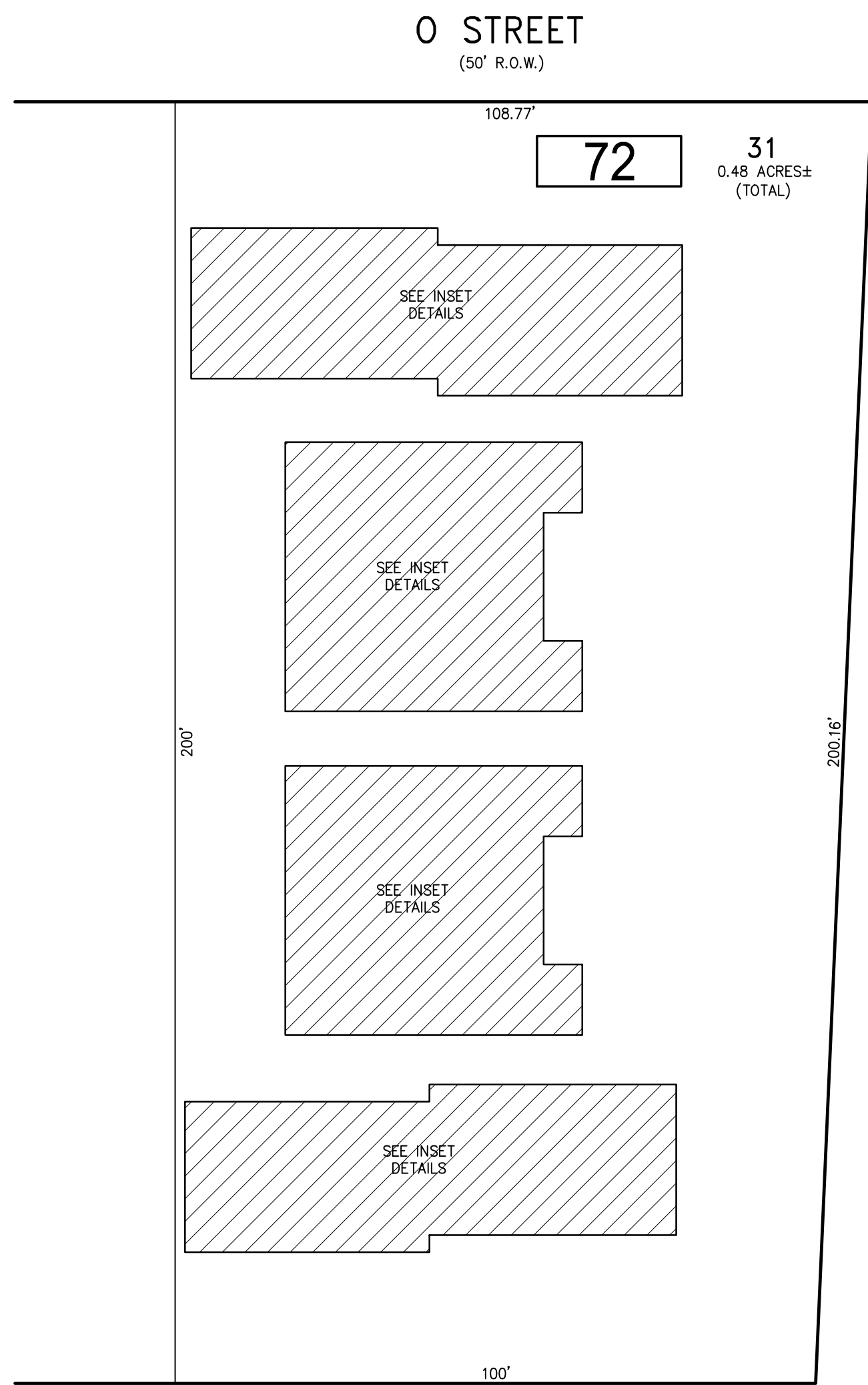


BLOCK NUMBER	LOT NUMBER	CONDO QUALIFIER	SQUARE FOOTAGE
69	19.02	C.A1	2169 SF.
69	19.03	C.A2	2169 SF.

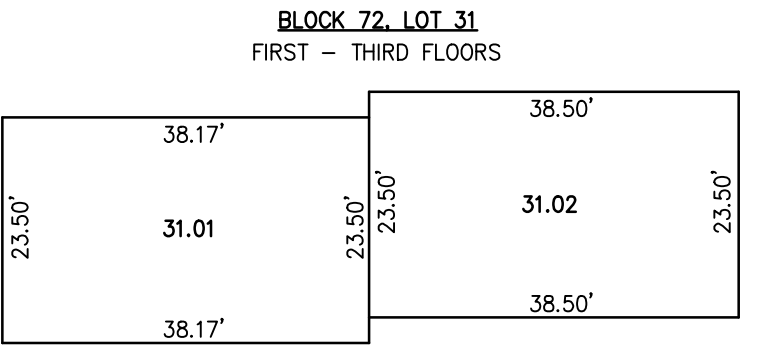
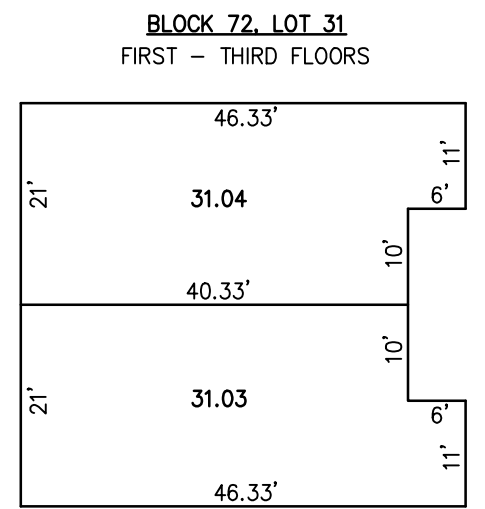
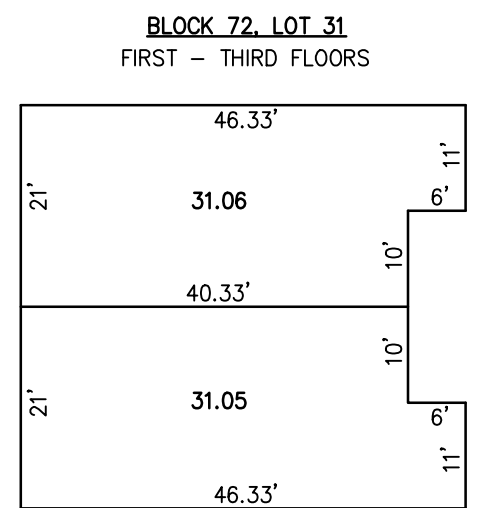
**DETAILS**  
SCALE: 1"=20'

**PLAN**  
SCALE: 1"=20'

**BLOCK 69, LOT 19.01**  
**63-65 LAFAYETTE AVENUE CONDOMINIUM**



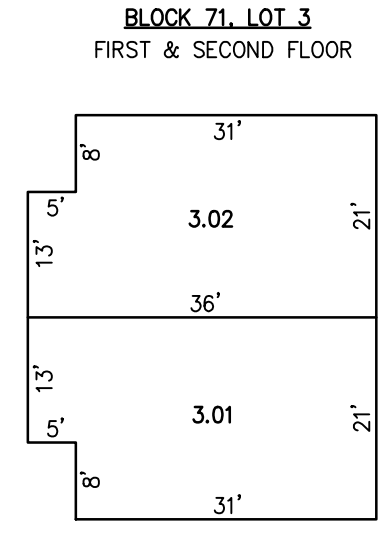
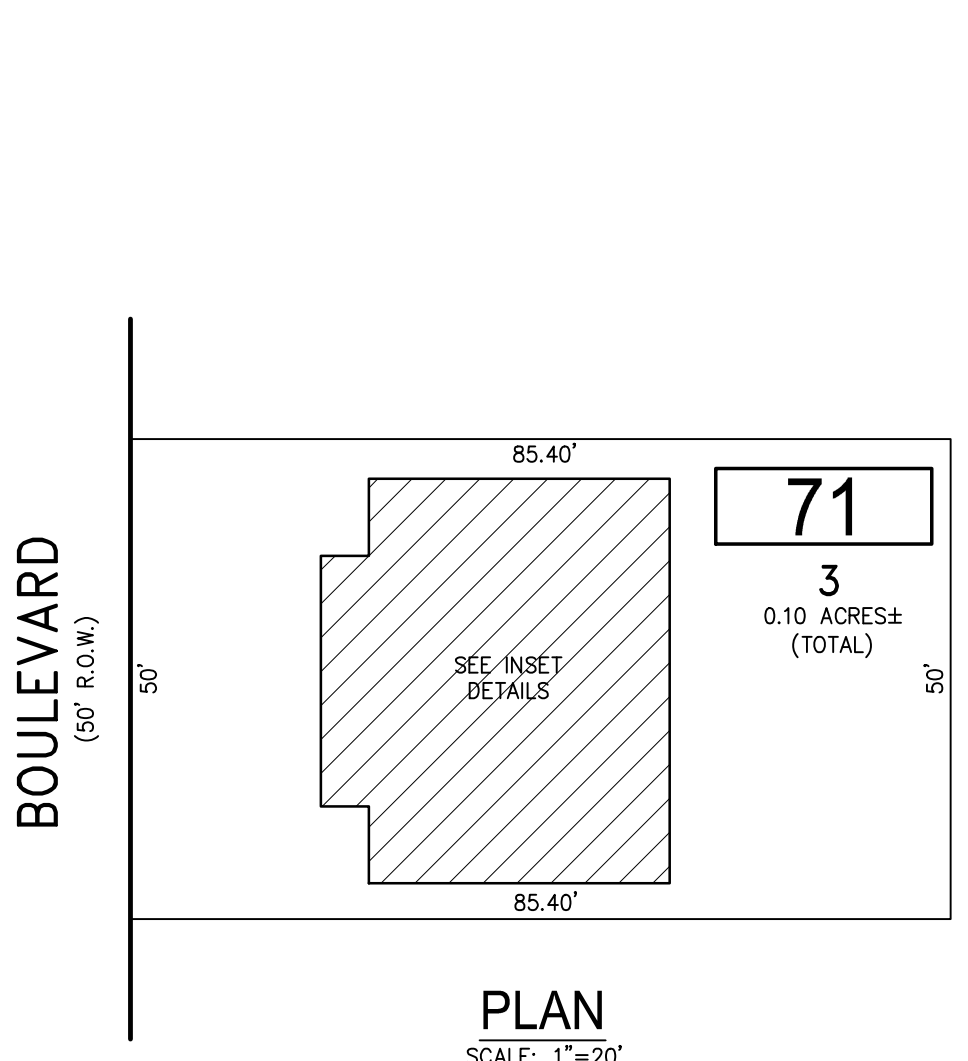
BLOCK NUMBER	LOT NUMBER	CONDO QUALIFIER	SQUARE FOOTAGE
72	31.01	C.A1	2276 SF.
72	31.02	C.A2	2276 SF.
72	31.03	C.A3	2700 SF.
72	31.04	C.A4	2700 SF.
72	31.05	C.A5	2700 SF.
72	31.06	C.A6	2700 SF.
72	31.07	C.A7	2276 SF.
72	31.08	C.A8	2276 SF.



**DETAILS**  
SCALE: 1"=20'

**PLAN**  
SCALE: 1"=20'

**BLOCK 72, LOT 31**  
**SEAGULL OCEAN FRONT ESTATES CONDOMINIUM**  
**1401 N OCEAN AVENUE**



BLOCK NUMBER	LOT NUMBER	CONDO QUALIFIER	SQUARE FOOTAGE
71	3.01	C.A1	1875 SF.
71	3.02	C.A2	1875 SF.

**DETAILS**  
SCALE: 1"=20'

**PLAN**  
SCALE: 1"=20'

**BLOCK 71, LOT 3**  
**1308 - 1310 BOULEVARD CONDOMINIUM**

BLOCK 69, LOT 19.01  
BLOCK 71, LOT 3  
BLOCK 71, LOT 14  
BLOCK 72, LOT 31  
SEE SHEET 13

**TAX MAP**  
**BOROUGH OF SEASIDE PARK**  
OCEAN COUNTY NEW JERSEY  
SCALE: NOTED DATE: 1-10-2016  
**CHARLES E. ADAMSON** NJ PROFESSIONAL LAND SURVEYOR LIC. NO. 42627  
**REMINGTON, VERNICK & VENA ENGINEERS**  
9 ALLEN STREET, TOMS RIVER, N.J. 08753  
(732) 286-9220, FAX (732) 505-8416  
WEB SITE ADDRESS: WWW.RVVE.COM