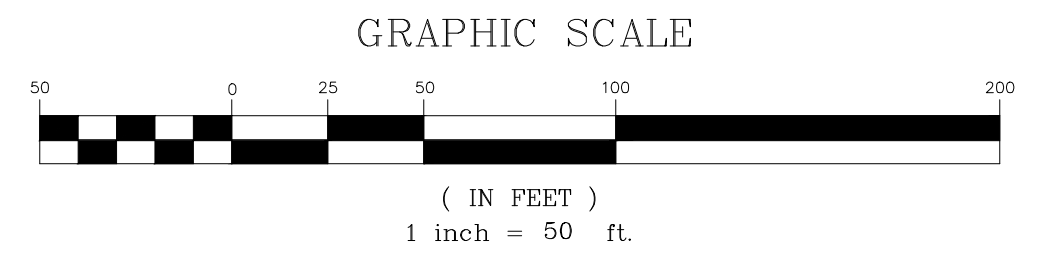
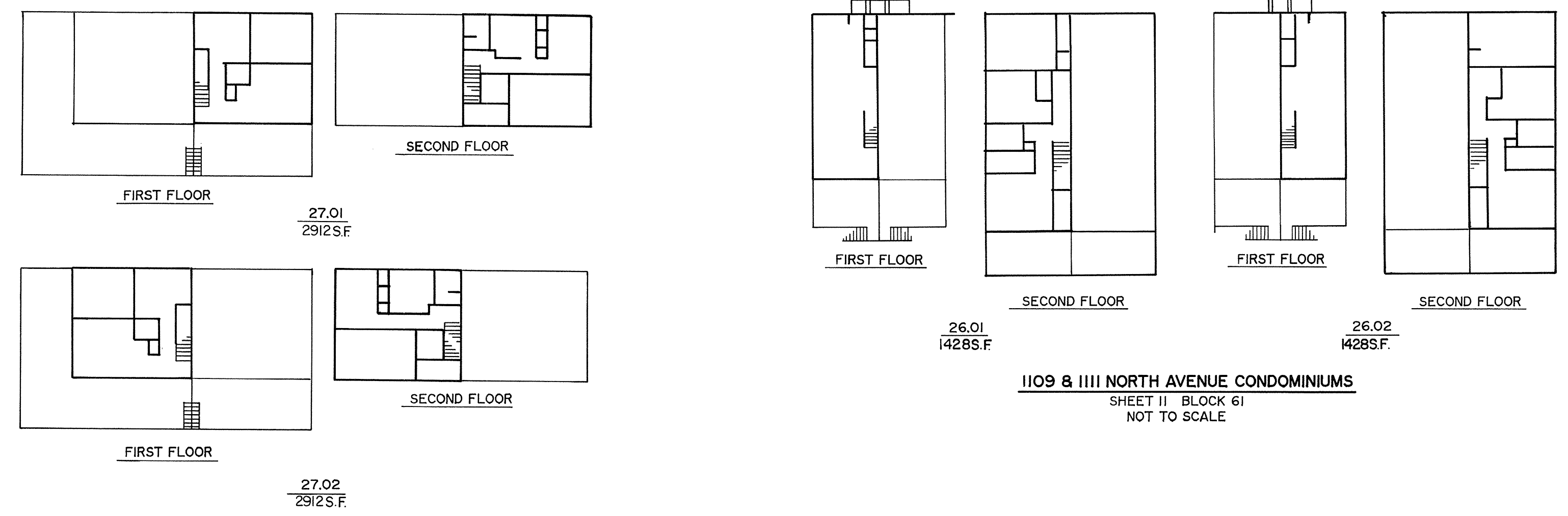
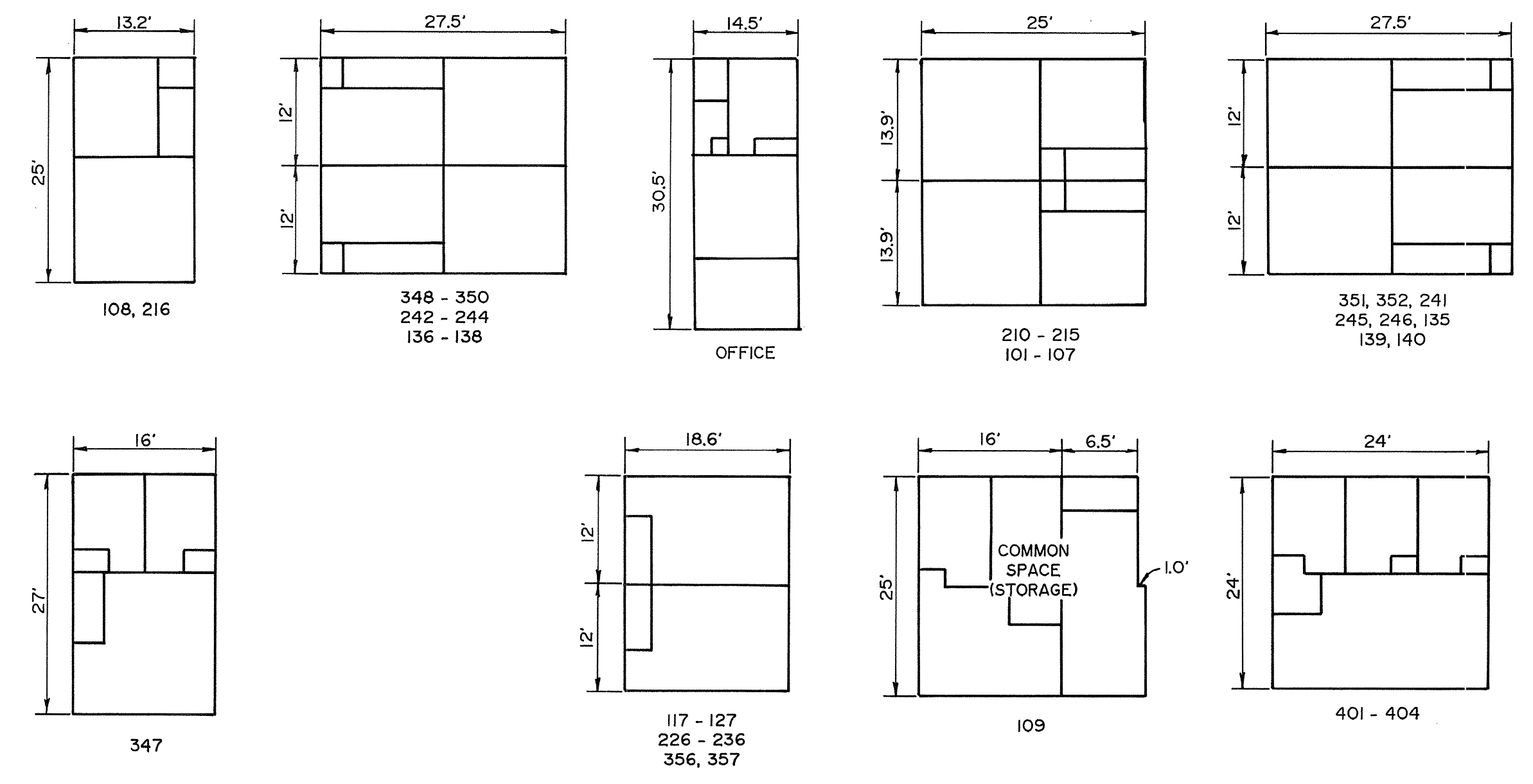
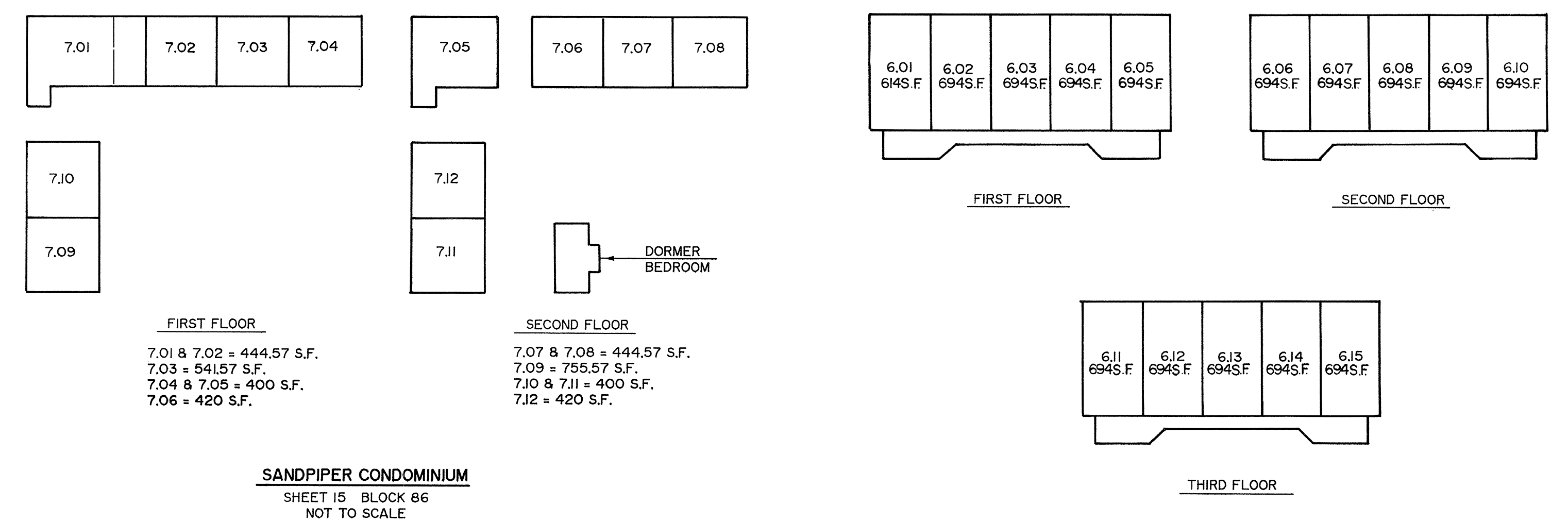
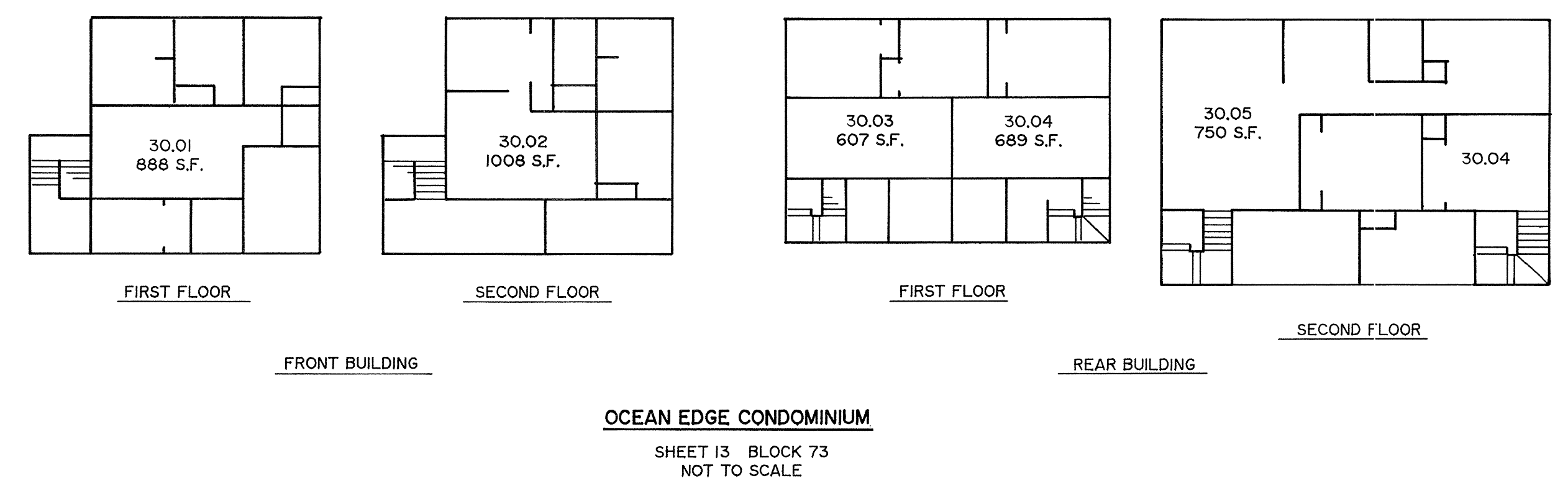
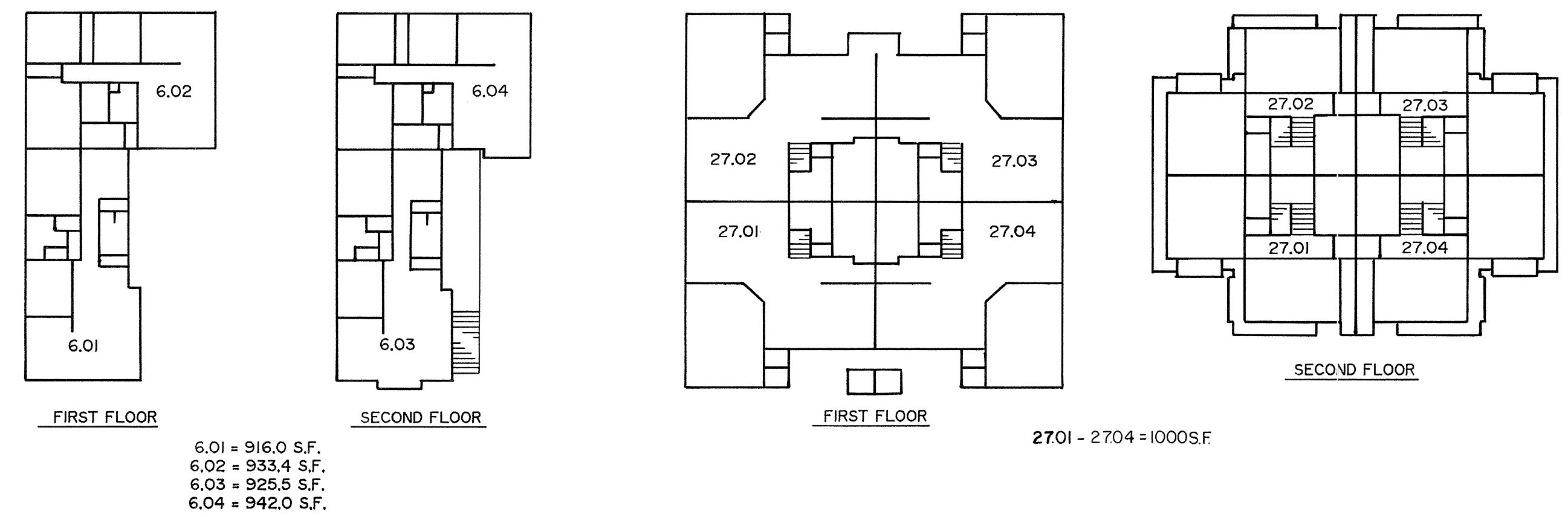


REVISION		
DATE	L.S. NAME	LIC. #
FEB. 1992	THOMAS CRADER	21782
JAN. 1993	THOMAS CRADER	21782
SEPT. 2000	THOMAS CRADER	21782
JULY 2009	MICHAEL MCGURL	38338
JAN. 2016	CHARLES E. ADAMSON	42627



THIS SHEET HAS BEEN REVISED USING COMPUTER AIDED DRAFTING/DESIGN. (CADD)

THIS SHEET IS A SCANNED COPY OF THE TAX MAP PREPARED BY REMINGTON & VERNICK ENGINEERS DATED DECEMBER 1986. THE ORIGINAL APPROVED MAP IS ON FILE AT CME ASSOCIATES, HOWELL, NEW JERSEY.

TAX MAP
BOROUGH OF SEASIDE PARK
OCEAN COUNTY NEW JERSEY
SCALE DECEMBER 1986
CRAIG F. REMINGTON, L.S.
REMINGTON & VERNICK ENGINEERS
9 ALLEN STREET, TOMS RIVER, NEW JERSEY