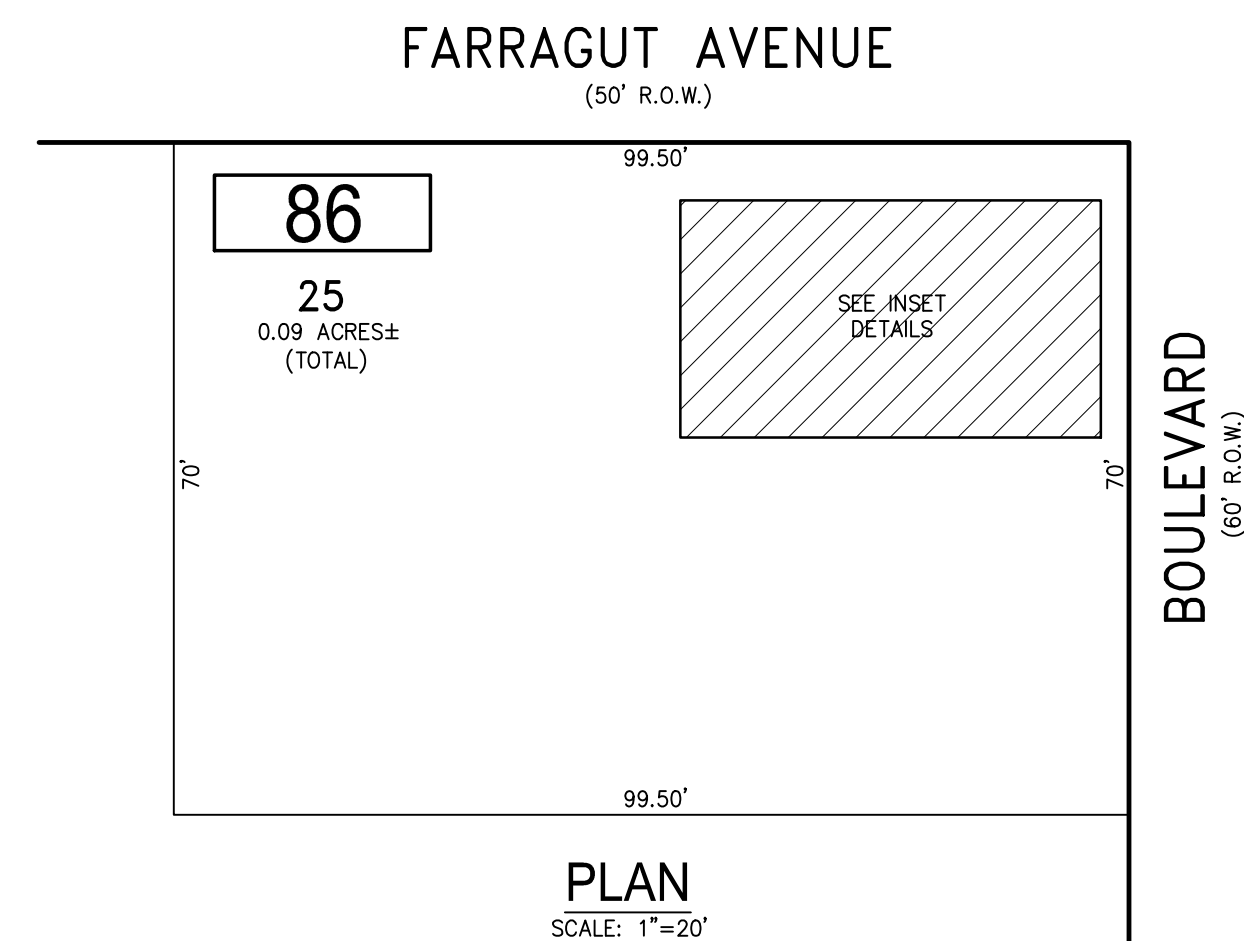
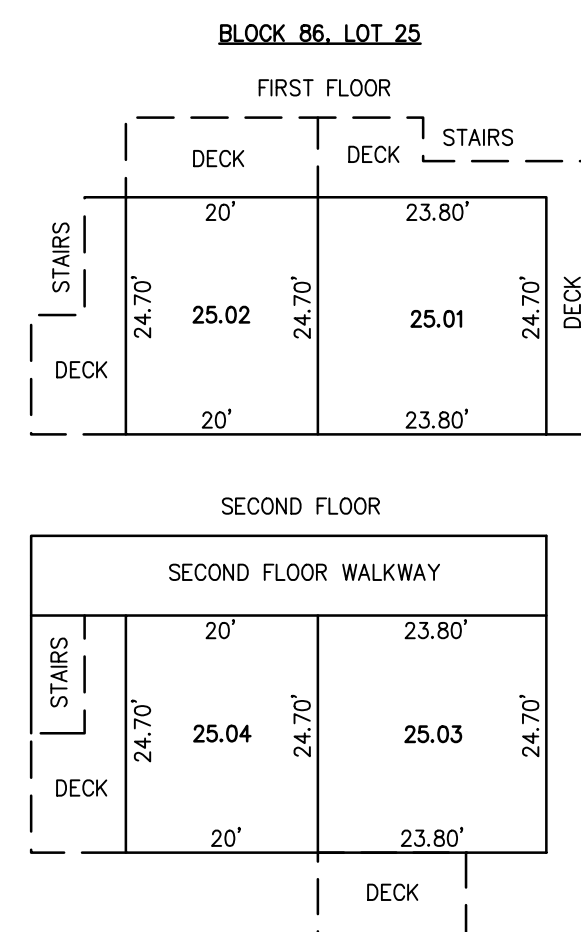


REVISIONS		
DATE	NAME	NO.
JAN. 2016	CHARLES E. ADAMSON	42627
DEC. 2019	CHARLES E. ADAMSON	42627

**NOTE:**  
THIS SHEET HAS BEEN DRAWN USING COMPUTER AIDED DRAFTING/DESIGN (CAD/D) AND COORDINATE GEOMETRY (COGO).



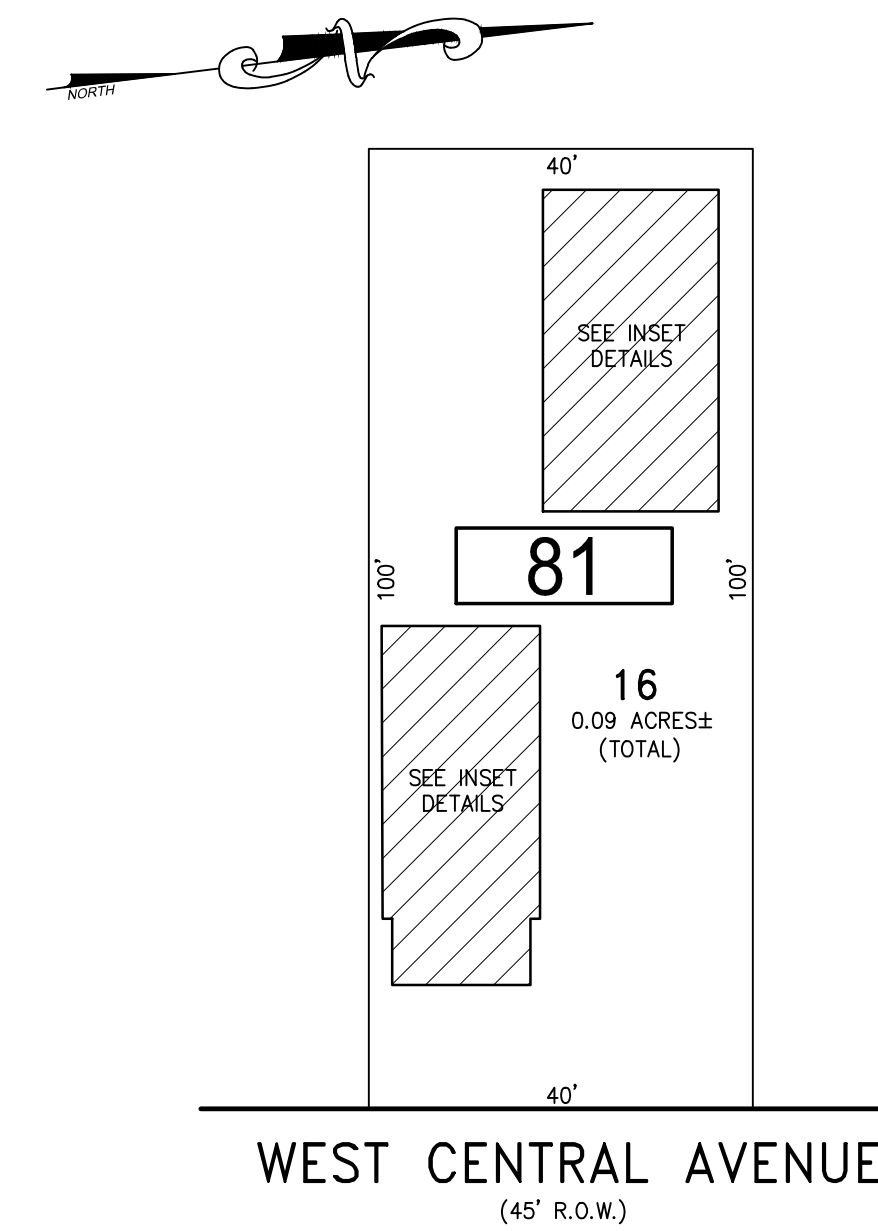
**PLAN**  
SCALE: 1"=20'



**DETAILS**  
SCALE: 1"=20'

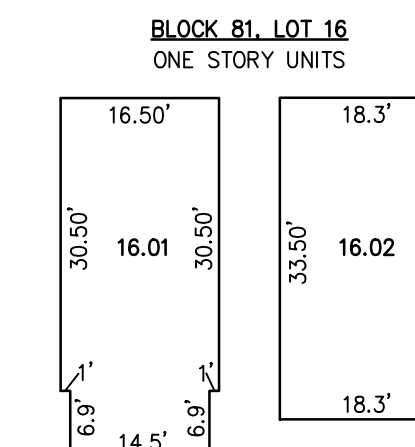
**BLOCK 86, LOT 25**  
1819 BOULEVARD CONDOMINIUM

BLOCK NUMBER	LOT NUMBER	CONDO QUALIFIER	SQUARE FOOTAGE
81	25.01	C.A1	600 SF.
81	25.02	C.A2	432 SF.
81	25.03	C.B3	600 SF.
81	25.04	C.B4	432 SF.



**PLAN**  
SCALE: 1"=20'

**BLOCK 81, LOT 16**  
1709 - 1711 NW CENTRAL AVENUE CONDOMINIUM

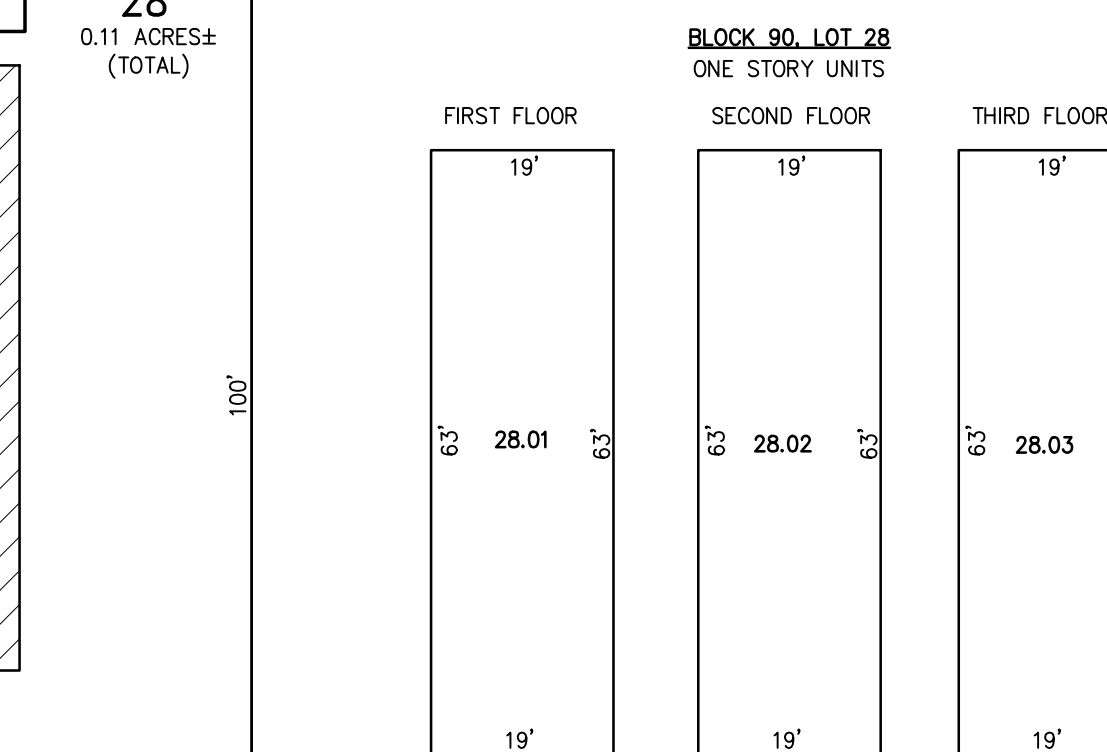


**DETAILS**  
SCALE: 1"=20'

BLOCK NUMBER	LOT NUMBER	CONDO QUALIFIER	SQUARE FOOTAGE
81	16.01	C.A1	592 SF.
81	16.02	C.A2	594 SF.

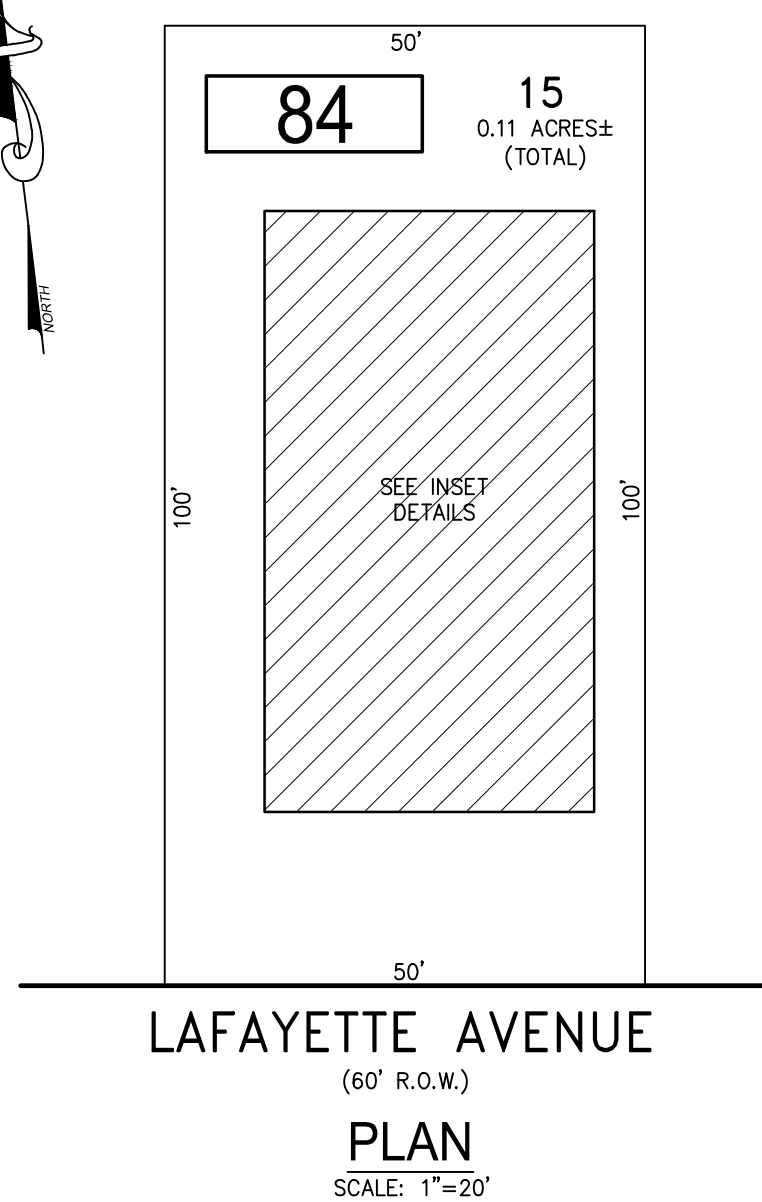
**PLAN**  
SCALE: 1"=20'

BLOCK NUMBER	LOT NUMBER	CONDO QUALIFIER	SQUARE FOOTAGE
90	28.01	C.A1	1134 SF.
90	28.02	C.B2	1134 SF.
90	28.03	C.C3	1134 SF.



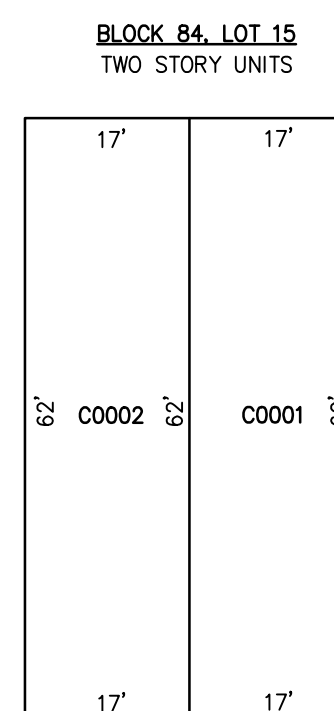
**DETAILS**  
SCALE: 1"=20'

**BLOCK 90, LOT 28**  
35 FARRAGUT AVENUE CONDOMINIUM



**PLAN**  
SCALE: 1"=20'

**BLOCK 84, LOT 15**  
64 LAFAYETTE AVENUE CONDOMINIUM



**DETAILS**  
SCALE: 1"=20'

BLOCK NUMBER	LOT NUMBER	CONDO QUALIFIER	SQUARE FOOTAGE
81	15	C0001	2000 SF.
81	15	C0002	2000 SF.

BLOCK 81, LOT 16  
SEE SHEET 14  
BLOCK 84, LOT 15  
BLOCK 86, LOT 25  
BLOCK 90, LOT 28  
SEE SHEET 15

**TAX MAP**  
**BOROUGH OF SEASIDE PARK**  
OCEAN COUNTY NEW JERSEY  
SCALE: NOTED DATE: 1-10-2016  
CHARLES E. ADAMSON NJ PROFESSIONAL LAND SURVEYOR LIC. NO. 42627  
**REMINGTON, VERNICK & VENA ENGINEERS**  
24 GA 28003300  
9 ALLEN STREET, TOMS RIVER, N.J. 08753  
(732) 286-9220, FAX (732) 505-9416  
WEB SITE ADDRESS: WWW.RVVE.COM