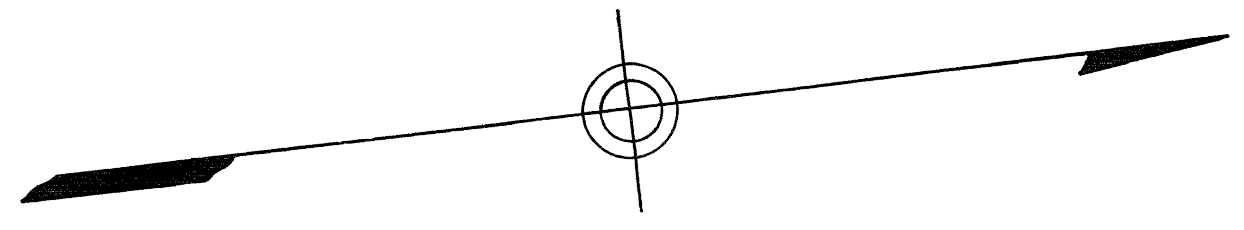


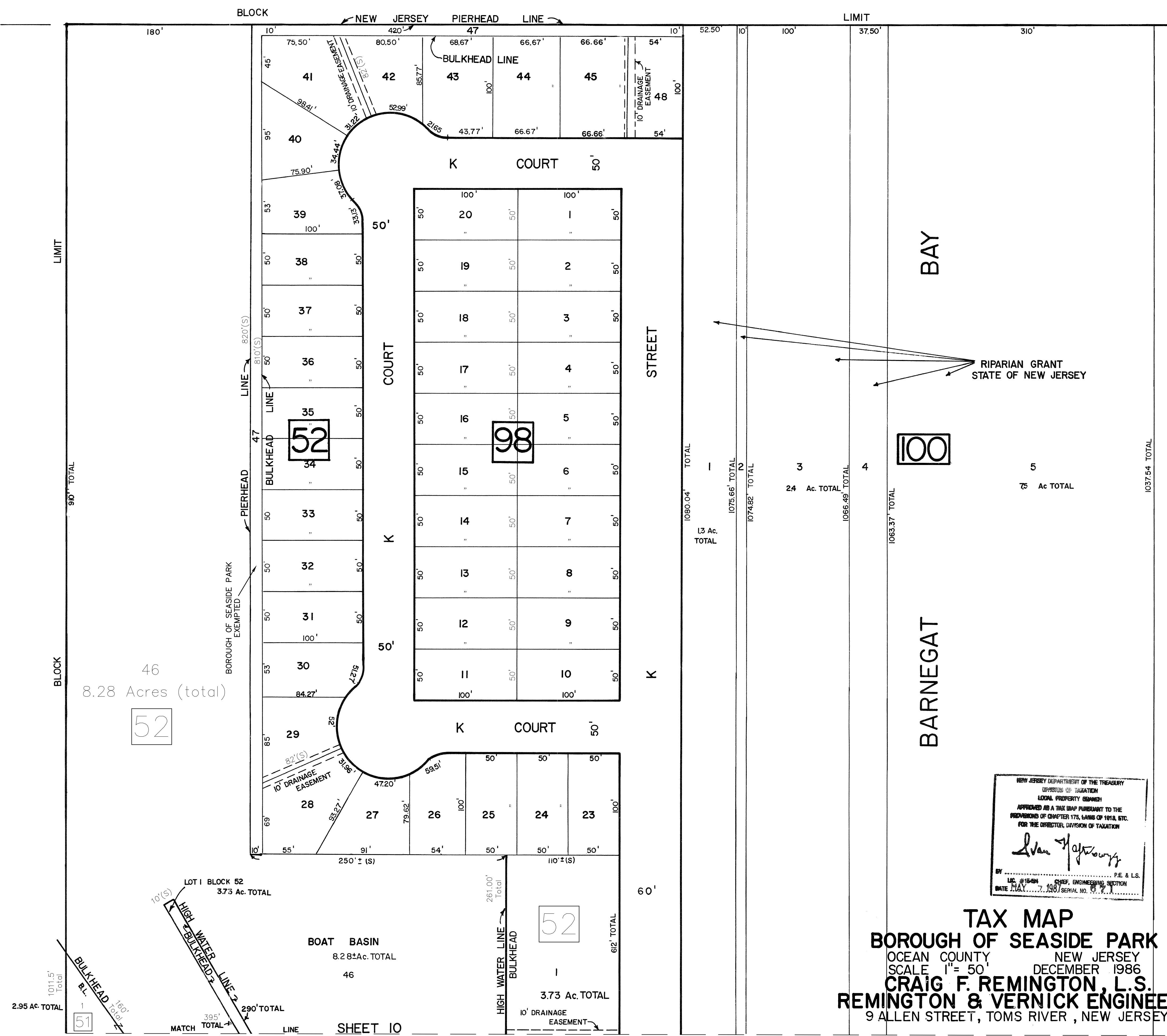
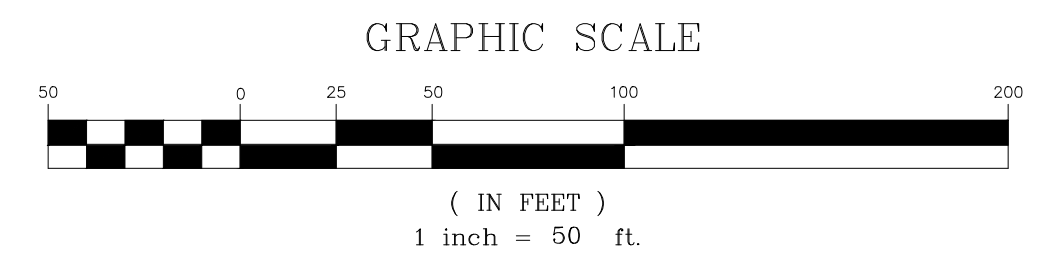
REVISION		
DATE	L.S. NAME	LIC. #
FEB. 1992	THOMAS CRADER	21782
JULY 2009	MICHAEL MCGURL	38338
JAN. 2016	CHARLES E. ADAMSON	42627

BARNEGAT BAY



THIS SHEET HAS BEEN REVISED USING COMPUTER AIDED DRAFTING/DESIGN. (CADD)

THIS SHEET IS A SCANNED COPY OF THE TAX MAP PREPARED BY REMINGTON & VERNICK ENGINEERS DATED DECEMBER 1986. THE ORIGINAL APPROVED MAP IS ON FILE AT CME ASSOCIATES, HOWELL, NEW JERSEY.



NEW JERSEY DEPARTMENT OF THE TREASURY
 DIVISION OF TAXATION
 LOCAL PROPERTY TAXES
 APPROVED AS A TAX MAP PURSUANT TO THE PROVISIONS OF CHAPTER 175, LAWS OF 1978, ETC. FOR THE DIRECTOR, DIVISION OF TAXATION
[Signature]
 BY LIC. 45-508-0108 C.S.P., ENGINEERING SECTION DATE MAY 7, 1986 SERIAL NO. 19, 2, 1 P.E. & L.S.

TAX MAP
BOROUGH OF SEASIDE PARK
 OCEAN COUNTY, NEW JERSEY
 SCALE 1" = 50' DECEMBER 1986
CRAIG F. REMINGTON, L.S.
REMINGTON & VERNICK ENGINEERS
 9 ALLEN STREET, TOMS RIVER, NEW JERSEY

M PAPER STREET-UNIMPROVED STREET

SHEET 12