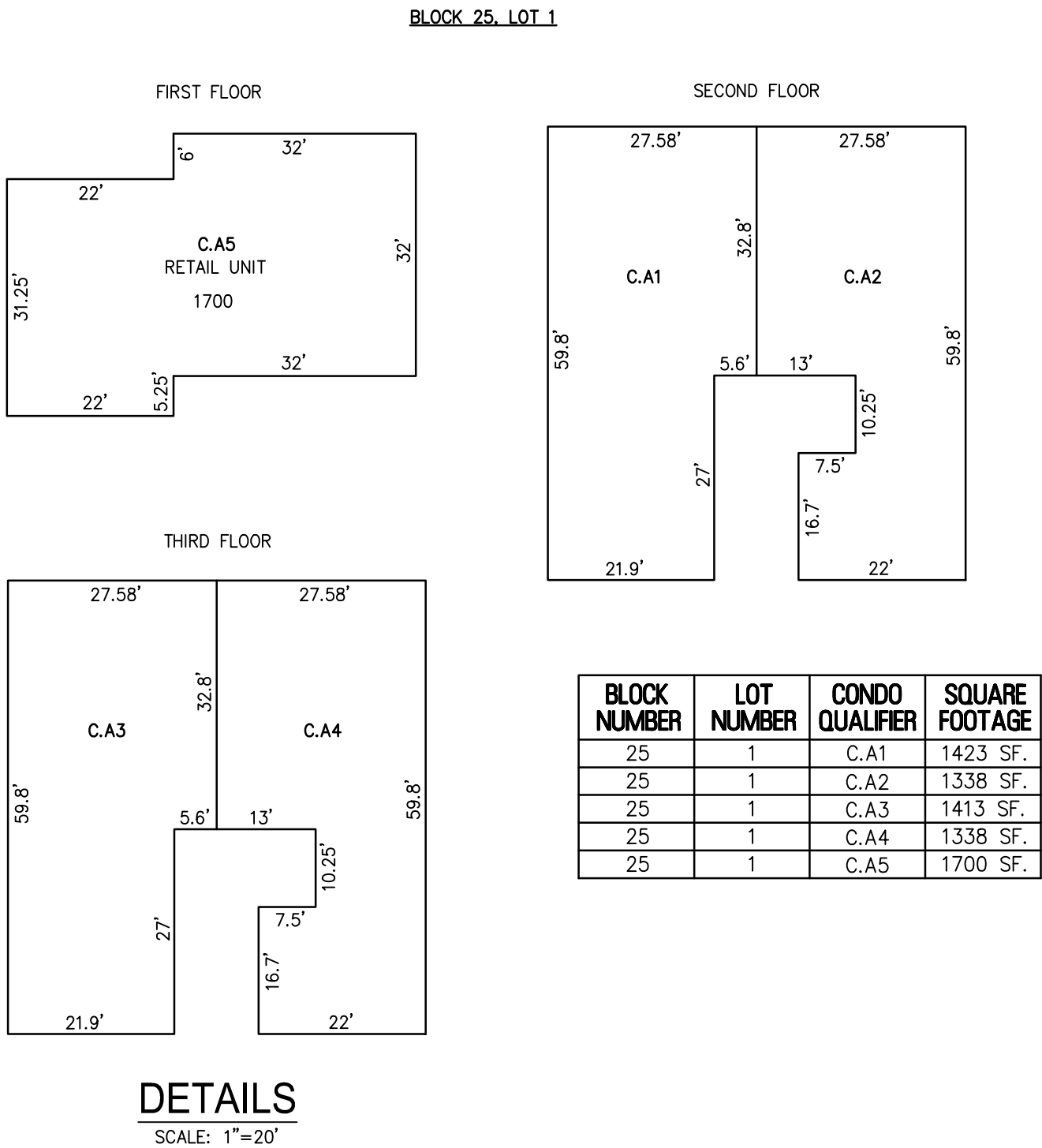
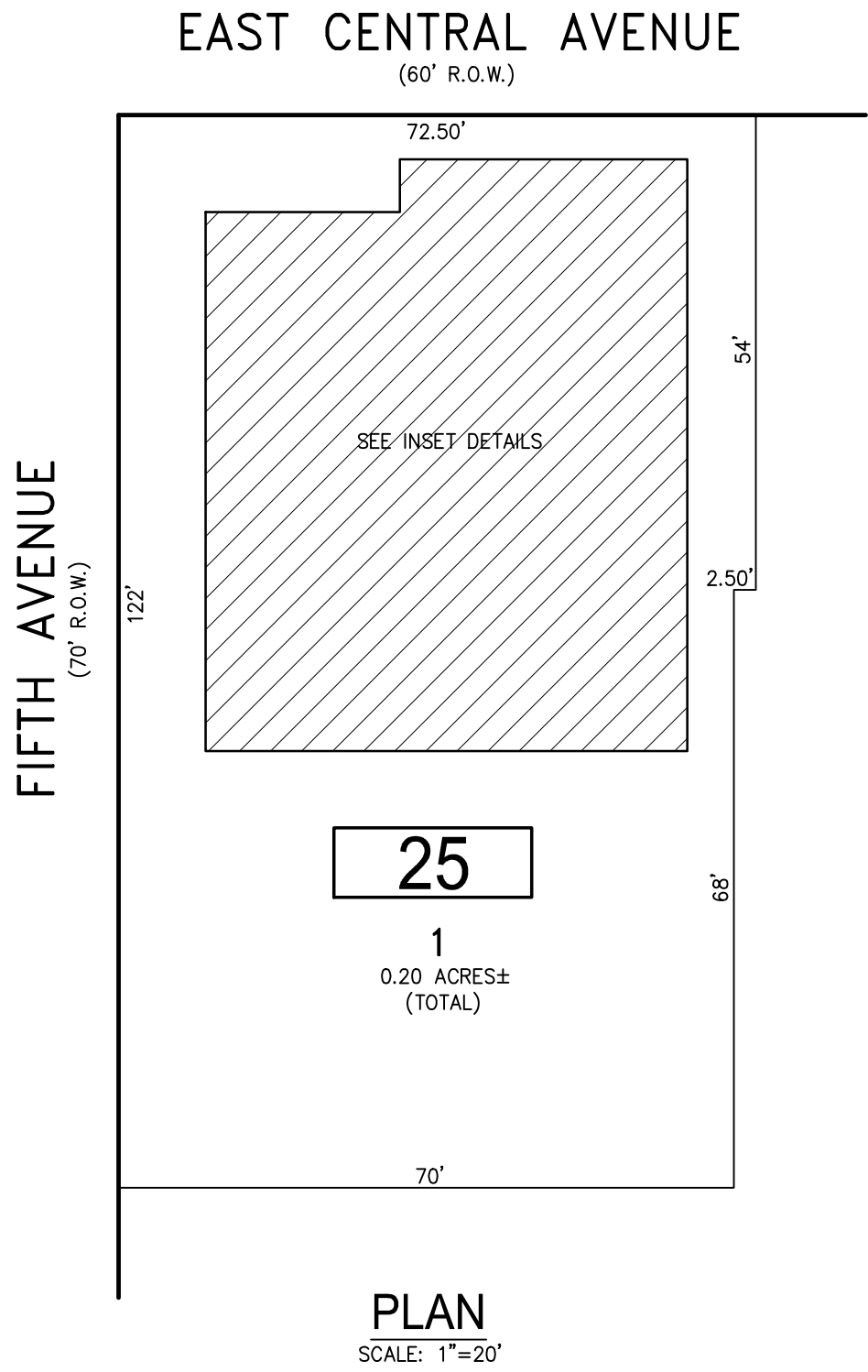


REVISIONS		
DATE	NAME	NO.

NOTE:
THIS SHEET HAS BEEN DRAWN USING COMPUTER AIDED DRAFTING/DESIGN (CAD/D) AND COORDINATE GEOMETRY (COGO).



BLOCK 25, LOT 1
410 CENTRAL TOWNHOMES, A CONDOMINIUM

BLOCK 25, LOT 1
SEE SHEET 5

TAX MAP

BOROUGH OF SEASIDE PARK

OCEAN COUNTY NEW JERSEY

SCALE: NOTEDDATE : 11-29-2023

CHARLES E. ADAMSONN.J.P.L.S. LIC. NO. 42627

RVE

1901

REMINGTON & VERNICK ENGINEERS

9 ALLEN STREET, TOMS RIVER, NJ 08753

(732) 286-9220, FAX (732) 505-8416, WEB SITE ADDRESS: WWW.RVE.COM

Certificate of Authorization: 24 GA 28003300

Excellence • Innovation • Service

5.01