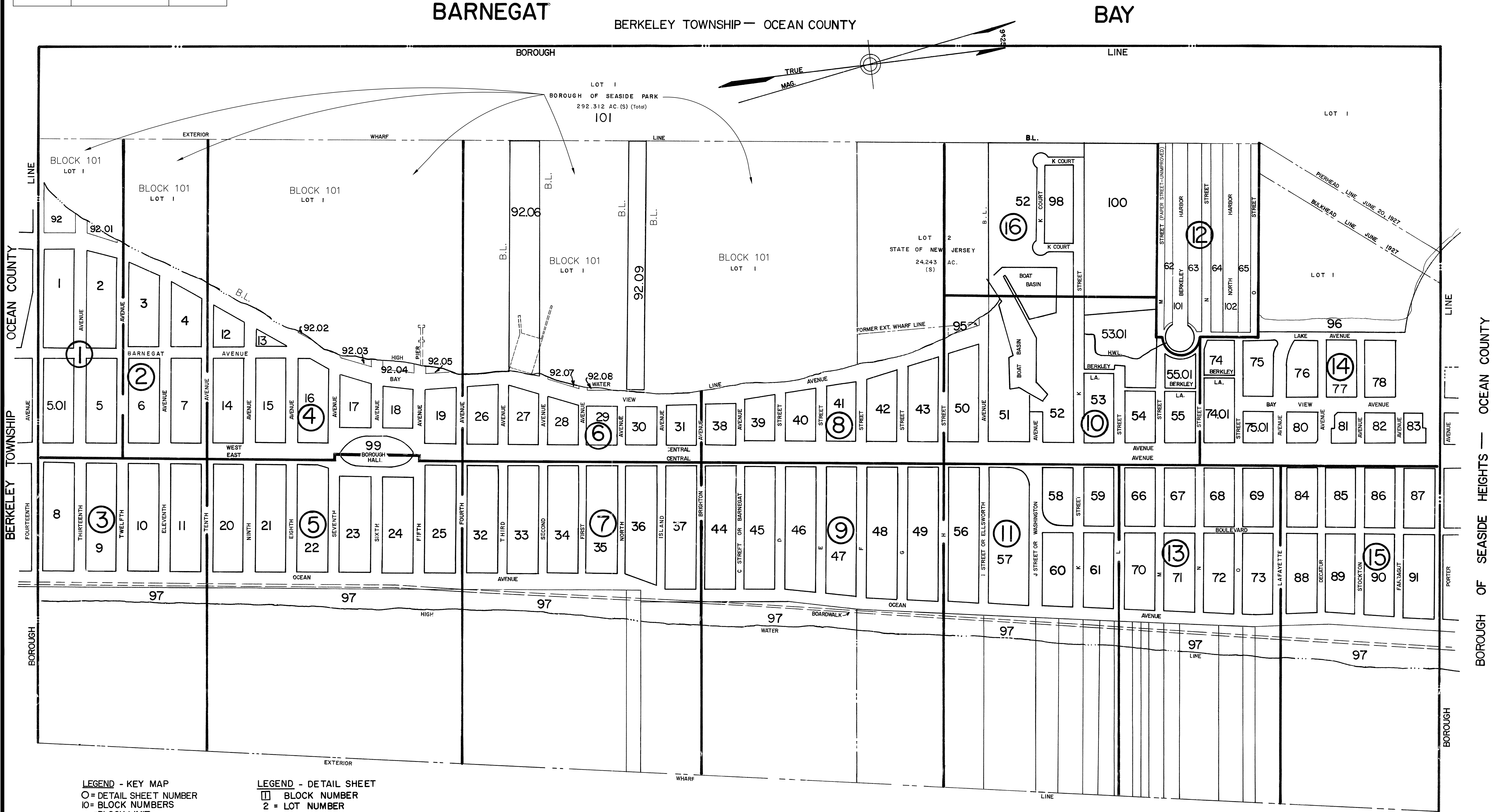


REVISION		
DATE	L.S. NAME	LIC. #
APRIL 1992	THOMAS CRADER	21782
JULY 2009	MICHAEL MCGURL	38338
JAN. 2016	CHARLES E. ADAMSON	42627

THIS SHEET HAS BEEN REVISED USING COMPUTER AIDED DRAFTING/DESIGN (CADD).

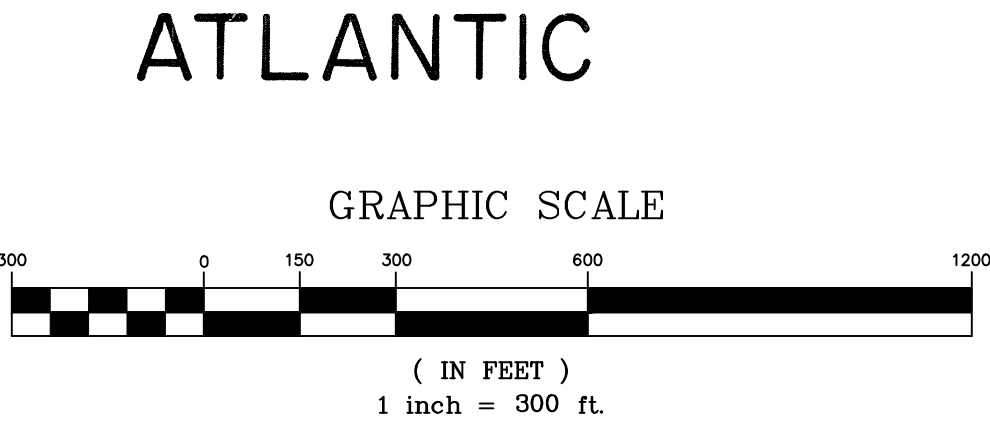
THIS SHEET IS A SCANNED COPY OF THE TAX MAP PREPARED BY REMINGTON & VERNICK ENGINEERS DATED DECEMBER 1986. THE ORIGINAL APPROVED MAP IS ON FILE AT CME ASSOCIATES, HOWELL, NEW JERSEY.



LEGEND - KEY MAP
O = DETAIL SHEET NUMBER
10 = BLOCK NUMBERS
- = BLOCK LIMIT
- - = SHEET LIMIT

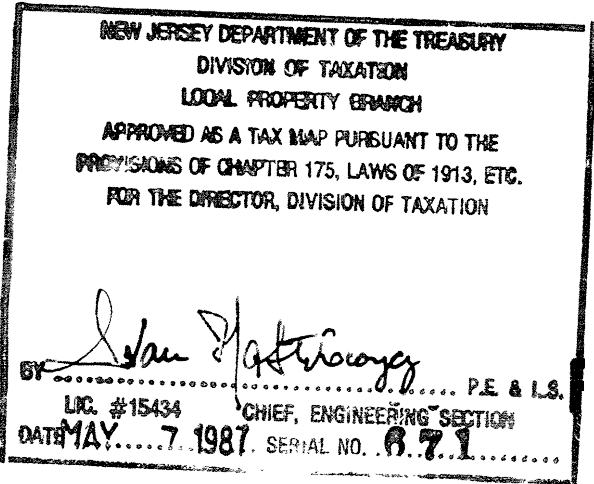
LEGEND - DETAIL SHEET
1 = BLOCK NUMBER
2 = LOT NUMBER

" THE AREAS, BOUNDARIES AND DIMENSIONS, SHOWN ON THIS TAX MAP, ARE DERIVED FROM GROUND SURVEYS, AERIAL SURVEYS, RECORDED PLANS, MAPS, DEEDS, WILLS, AND ARE TO BE USED FOR ASSESSMENT PURPOSES ONLY."



I HEREBY CERTIFY THAT THIS MAP HAS BEEN REVISED UNDER MY SUPERVISION AND COMPLIES WITH THE LAWS OF THE STATE OF NEW JERSEY.

CHARLES E. ADAMSON PROFESSIONAL LAND SURVEYOR
N.J. LICENSE NO. 42627



TAX MAP
BOROUGH OF SEASIDE PARK
OCEAN COUNTY, NEW JERSEY
SCALE 1" = 300'
DECEMBER 1986
CRAIG F. REMINGTON, L.S.
REMINGTON & VERNICK ENGINEERS
9 ALLEN STREET, TOMS RIVER, NEW JERSEY
TO SHOW CONDITIONS AS OF 11-1-2023